

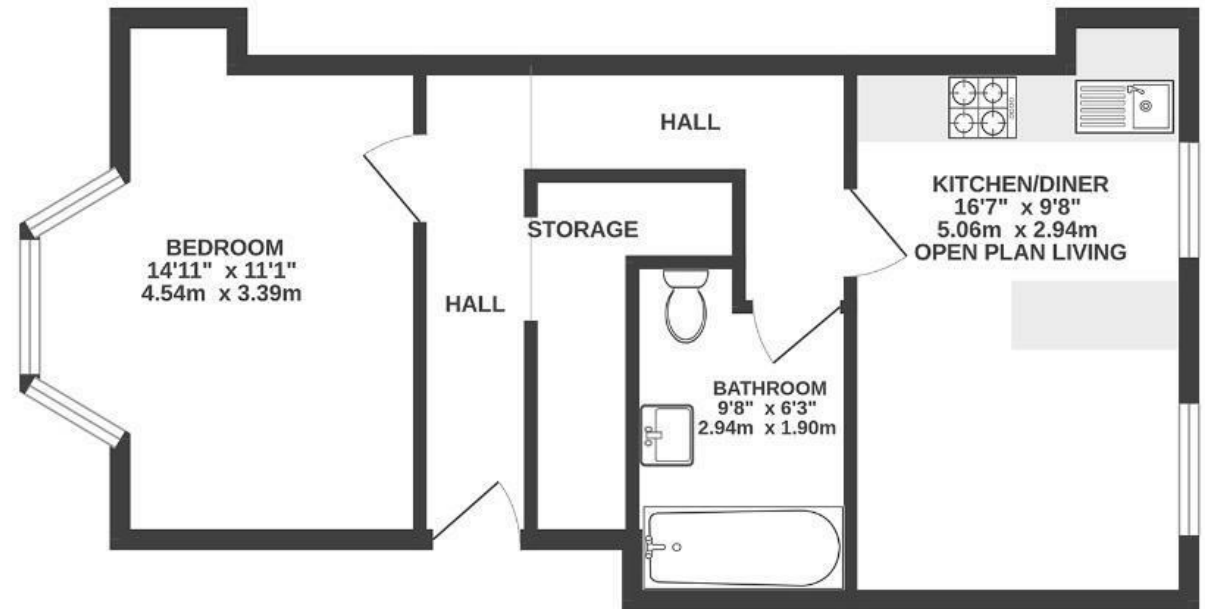
# Albany Road

## MONTPELIER

APPROXIMATE FLOOR AREA  
43 SQM / 465 SQFT



GROUND FLOOR



Boardwalk

# Albany Road , BRISTOL

£

£230,000



BS6 5LQ

ZZ

1 Bedrooms



1 Bathrooms

*"I love my morning routine of making a coffee and sitting on my sofa in the sun. Friday evenings at Wiper and True around the corner, followed by a pizza at Cafe Napolita have become regular, as too have walks up to St. Andrews park to sit in the sun."*

