



53 Reffley Lane, King's Lynn PE30 3SU

£289,995

3 1 1



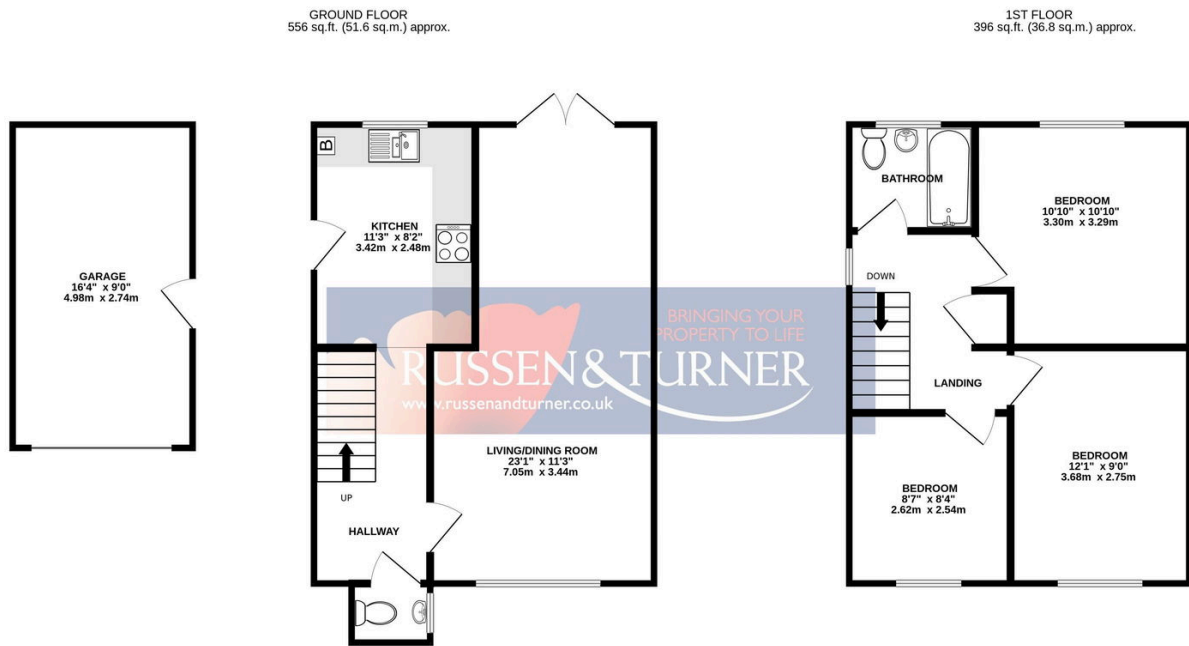
If you're searching for the perfect all-round family home, this beautifully refurbished three-bedroom detached house might just be "the one." Sitting proudly on a fantastic corner plot, it offers the dream combination of comfort, convenience and modern living, all just a short stroll from everything you and your family could ever need.





Key Features

- Detached House
- Beautifully Presented - Move in Ready
- Garage and Off-road Parking
- Ideal Family Home
- Gas Central Heating
- Three Bedrooms
- Private Rear Garden
- Popular Location
- Close to Amenities - Walking Distance to School and Shops
- Contemporary Kitchen



TOTAL FLOOR AREA : 952 sq.ft. (88.4 sq.m.) approx.

Whilst every attempt has been made to ensure the accuracy of the floorplan contained here, measurements of doors, windows, rooms and any other items are approximate and no responsibility is taken for any error, omission or mis-statement. This plan is for illustrative purposes only and should be used as such by any prospective purchaser. The services, systems and appliances shown have not been tested and no guarantee as to their operability or efficiency can be given.
Made with Metropix ©2025.

