

SNELLERS

ESTATE AGENTS



Draper Close, TW7

£349,950

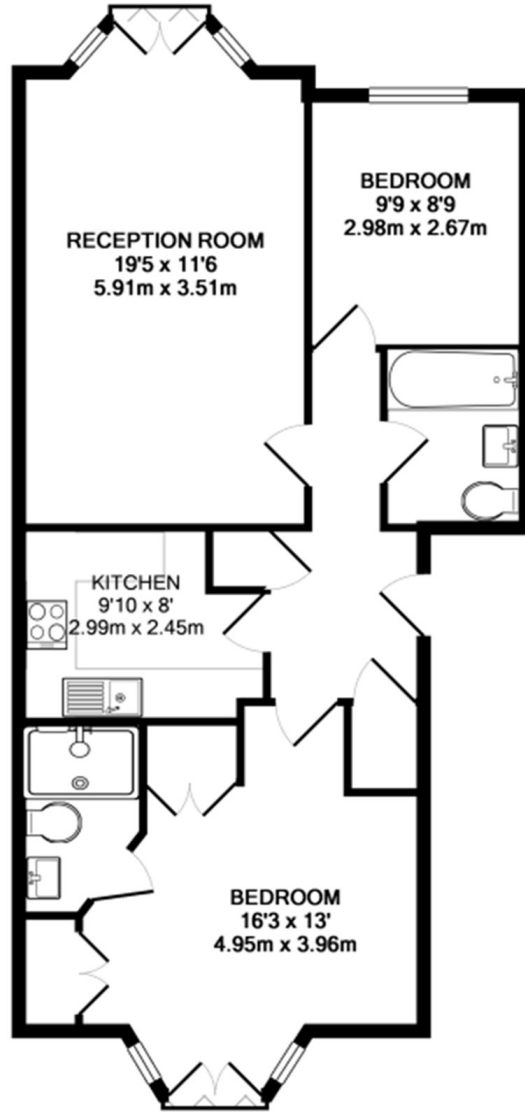
This spacious top floor purpose built apartment located within the popular gated development of Draper Close has two double bedrooms (master bedroom with ensuite shower room and a Juliet balcony), a large reception room, good size kitchen and allocated parking.

Draper Close is a quiet, gated cul-de-sac that is ideally located for the shops and amenities of Isleworth as well as being within easy walking distance of Isleworth mainline station and a number of local schools.

- Gated Development • Two Bedrooms • Two Bathrooms •
- Allocated Parking • Built In Wardrobes • No Onward Chain •

SNELLERS

ESTATE AGENTS



DRAPER CLOSE, TW7
TOTAL APPROX. FLOOR AREA 708 SQ.FT. (65.8 SQ.M.)

All measurements taken to RICS Guidelines for Gross Internal Area. Whilst every attempt has been made to ensure the accuracy of the floor plan contained here, all measurements are approximate and no responsibility is taken for any error, omission or misstatement. This plan is for illustrative purposes only and should be used as such by any prospective purchaser. The services, systems and appliances shown have not been tested and no guarantee as to their operability or efficiency can be given.
Made with Metropix ©2016

Snellers St. Margarets Sales
36 Crown Road
St Margarets
TW1 3EH
020 8892 8008
stmargaretssales@snellers.co.uk

Energy Rating: C We aim to make our particulars both accurate and reliable. However they are not guaranteed; nor do they form part of an offer or contract. If you require clarification on any points then please contact us, especially if you're traveling some distance to view. Please note that appliances and heating systems have not been tested and therefore no warranties can be given as to their good working order