



WV WESTWOODLEBER

WV WESTWOODLEBER
LET US GUIDE YOU HOME

Beechfield, Hoddesdon, EN11 9QJ
Offers in excess of £524,000



Beechfield, Hoddesdon, EN11 9QJ

Westwood Leber are delighted to bring to the market this deceptively spacious and beautifully presented three/ four bedroom semi-detached family home, situated on a highly sought-after residential road in Hoddesdon. This well-extended property offers versatile living space, perfect for modern family life.

The first floor features a luxurious master bedroom complete with an en-suite bathroom and a dressing room, which can easily be converted back into a fifth bedroom if desired. The home benefits from three generously sized reception rooms, providing ample living space. Additionally, there is a well-appointed utility room and a convenient ground floor W/C. Outside, the property boasts a secluded rear garden which has been thoughtfully landscaped. At the front of the house, a large driveway offers ample off-street parking. This property is an ideal choice for families looking to settle in Hoddesdon. An internal viewing is highly recommended!

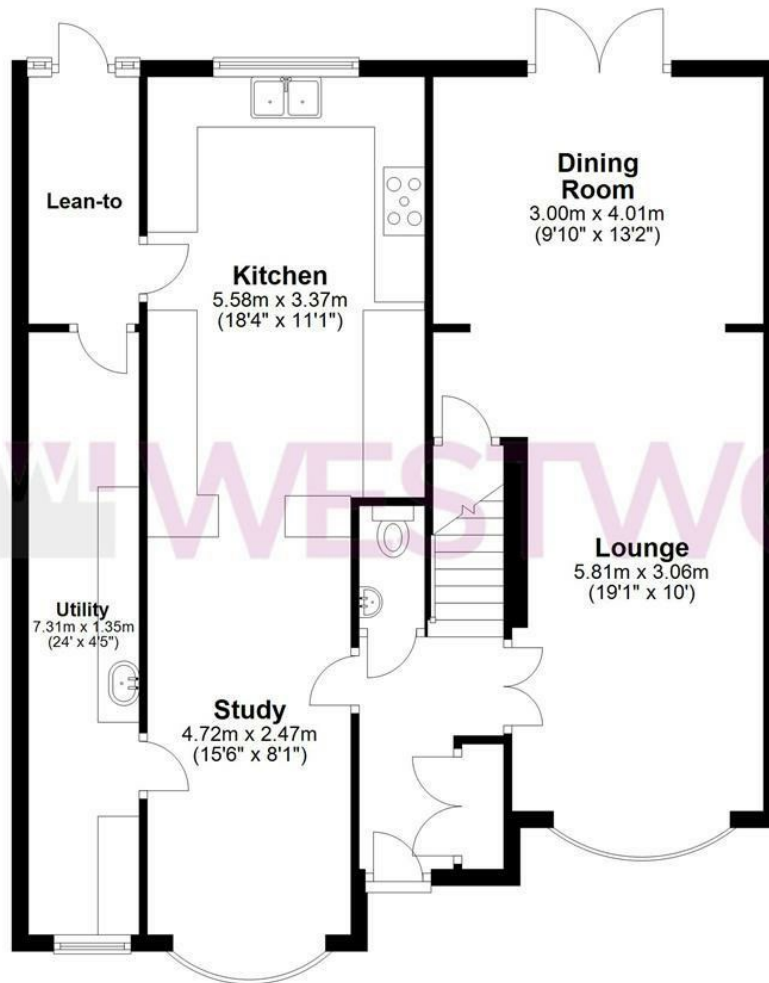


 WESTWOODLEBER

 WESTWOODLEBER
LET US GUIDE YOU HOME

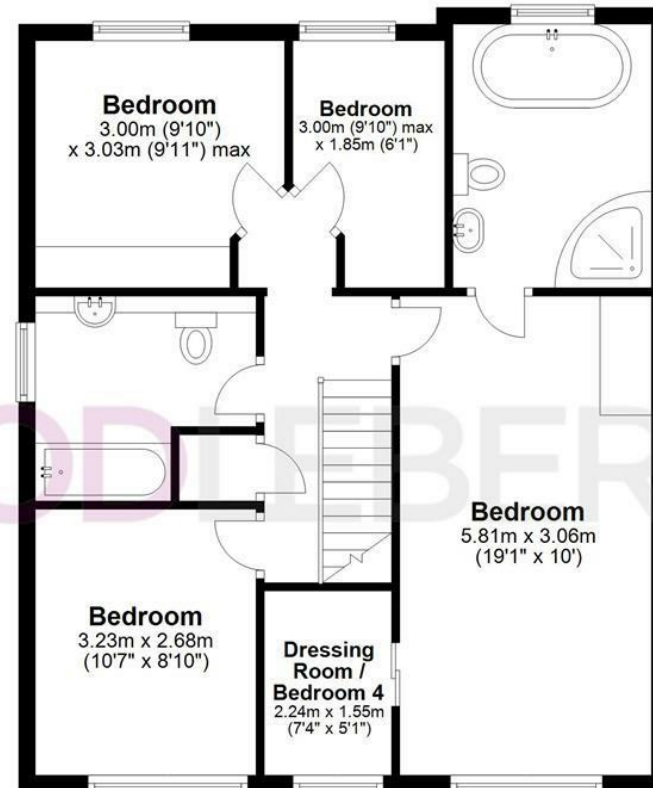
Ground Floor

Approx. 87.3 sq. metres (939.5 sq. feet)



First Floor

Approx. 67.2 sq. metres (722.9 sq. feet)



Total area: approx. 154.4 sq. metres (1662.4 sq. feet)

THE FLOORPLAN IS FOR ILLUSTRATIVE PURPOSES ONLY AND IS NOT TO SCALE. Measurements and features are approximate and may differ from the actual property. Verify all details independently; no liability is accepted for errors or omissions.

Property marketing provided by www.fotomarketing.co.uk









WESTWOODLEBER



WESTWOODLEBER



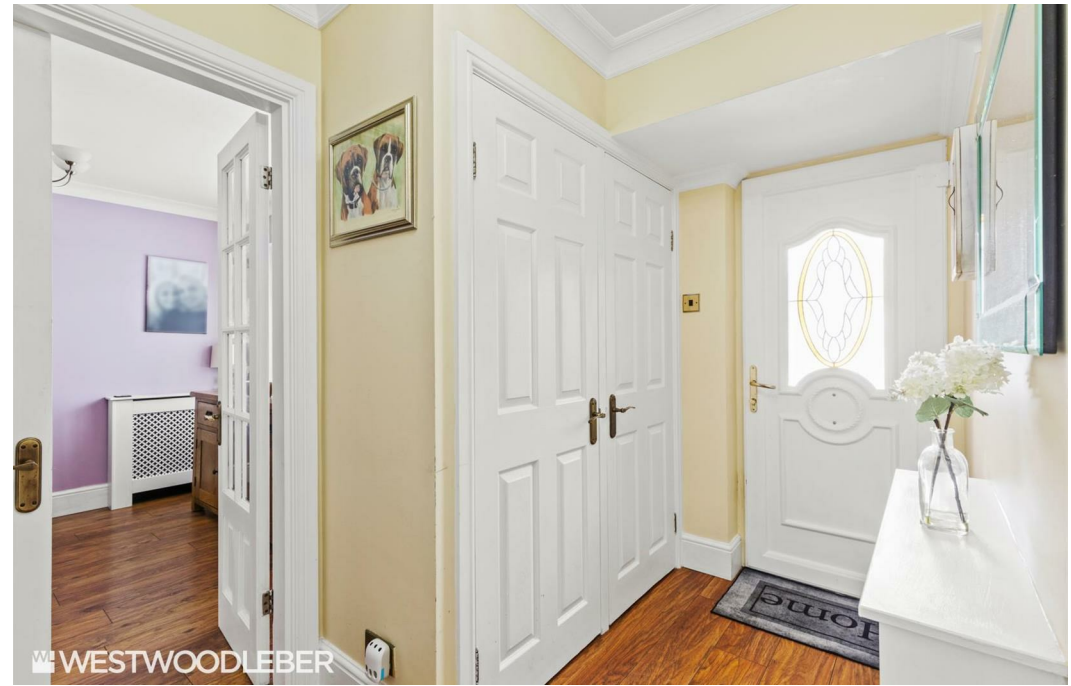
WESTWOODLEBER



WESTWOODLEBER



WESTWOODLEBER



WESTWOODLEBER



WESTWOODLEBER



WESTWOODLEBER



WESTWOODLEBER

WESTWOODLEBER
LET US GUIDE YOU HOME