



Upper Ground, SE1

£830,000

A highly attractive, over 950 sq ft, apartment with a very spacious living room, a separate fully-fitted kitchen, two generous double bedrooms, a large utility cupboard and a three-piece family bathroom, plus secure underground parking, an expansive communal courtyard and 24 hour concierge.

Enviably situated along the River Thames in London's vibrant South Bank, this location places you at the heart of the city's cultural scene. Moments away are iconic attractions including the Tate Modern, Shakespeare's Globe, and Borough Market, with excellent transport links via Blackfriars, Waterloo, Southwark, and London Bridge stations nearby.

Features

- Over 950 Sq Ft
- Large Living Room
- Separate Kitchen
- Two Double Bedrooms
- Utility Cupboard
- Secure Underground Parking
- 24 Hour Concierge



Upper Ground, SE1

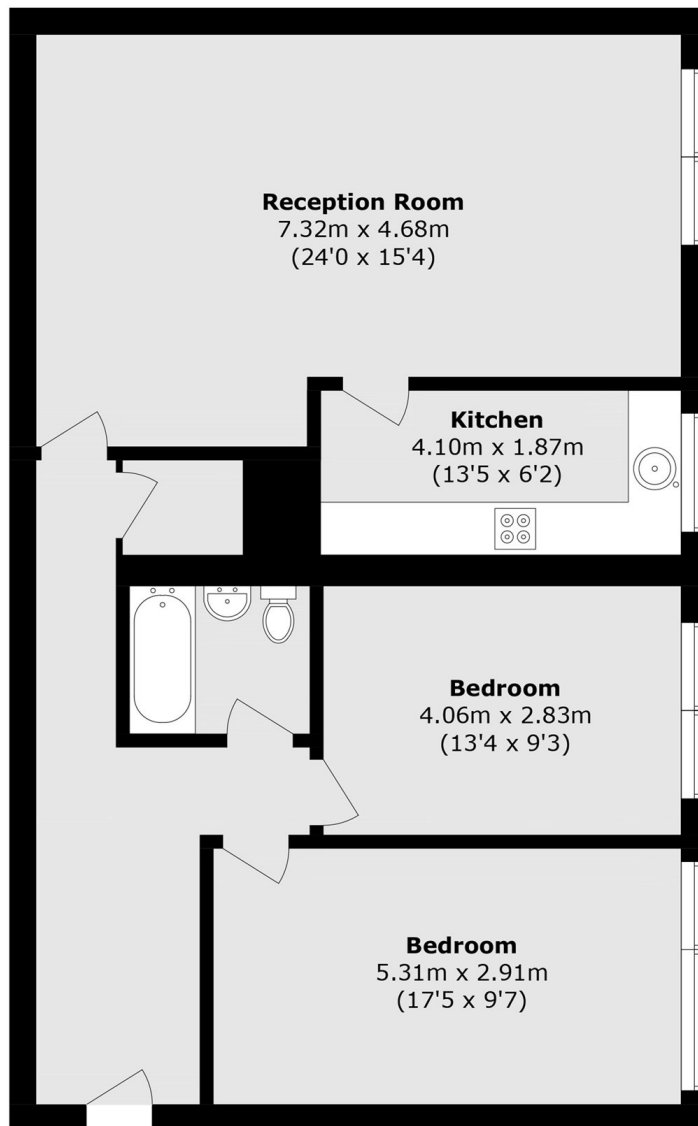
This impressive apartment offers more than 950 sq ft of well-designed living space, combining generous proportions with a practical layout. Bright and welcoming throughout, it provides an ideal setting for both everyday living and entertaining.

At the heart of the home is an expansive reception room, complemented by a separate, fully equipped kitchen fitted with modern cabinetry and appliances. Two spacious double bedrooms provide comfortable accommodation, while a stylish three-piece family bathroom and a large utility cupboard add further convenience.

Residents also benefit from a range of excellent amenities, including secure underground parking, a beautifully maintained communal courtyard, a dedicated 24-hour concierge service, and the added peace of mind that comes with a well-managed development.



Upper Ground, London, SE1



Fifth floor

Total Area (approx.): 88.9 sq. m (956.9 sq. ft)