



Hurfords

Oak Lane, Kings Cliffe Peterborough Freehold Offers in Excess of £480,000

Key Features



- Show Room Condition Home
- Perfect Retreat For Large Or Growing Family
- Host Of Local Amenities
- Many Features Throughout
- High Degree Of Privacy To All Sides

Immaculately Presented four Bedroom Executive Family Home in the Sought-After Village of King's Cliffe

Located in the charming and historic village of King's Cliffe, this beautifully presented four-bedroom detached executive home offers an exceptional blend of modern living and countryside tranquillity. Set on the edge of a popular residential development, this impressive property features a wraparound landscaped garden, enjoys open views over a children's play area, and benefits from a high level of privacy-making it an ideal retreat for families seeking space and peace in a semi-rural setting.

King's Cliffe is a picturesque village, rich in character and ideally positioned between the historic city of Peterborough and the Georgian



market town of Stamford, both of which are easily accessible. The village retains much of its traditional charm, offering a welcoming community atmosphere with a tranquil pace of life.

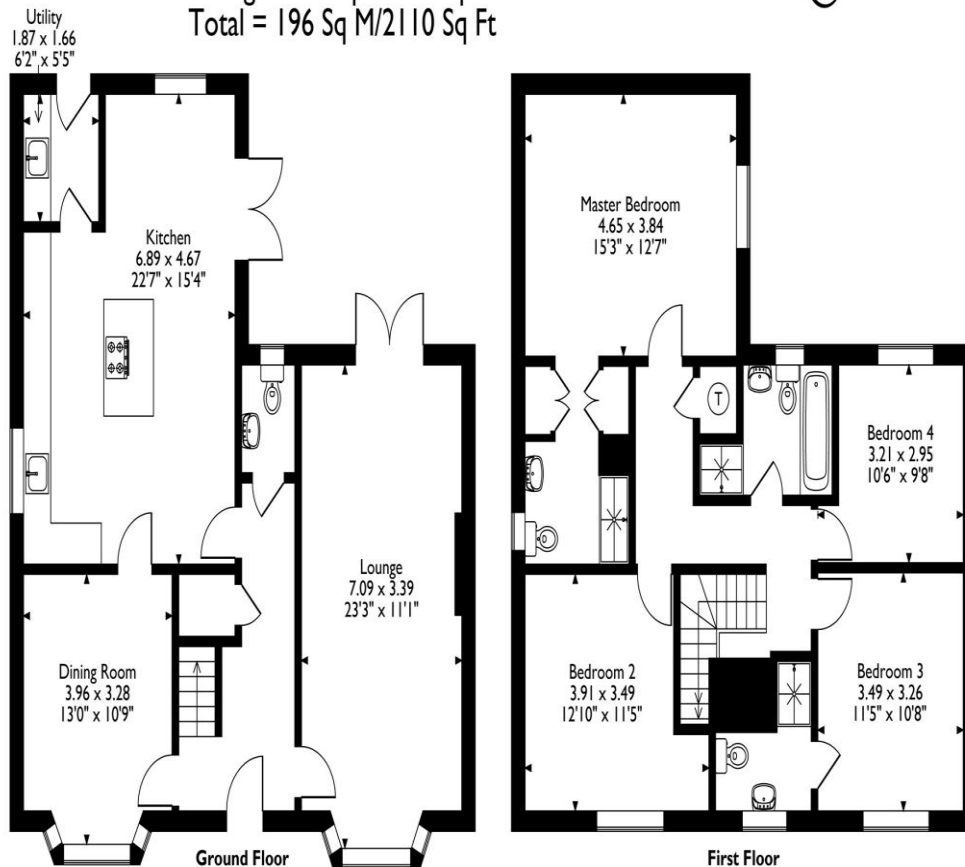
The home itself spans two spacious floors, beginning with a light-filled reception hall that sets the tone for the rest of the property. The modern kitchen is immaculately presented and ideal for both everyday use and entertaining, with quality fittings and plenty of workspace. The first floor boasts four generously sized bedrooms, each with its own unique charm. The principal bedroom features a stylish three-piece en-suite, while the family bathroom is finished to a high standard.

Outside, the property continues to impress with ample off-road parking, provided by a double-width driveway and a detached double garage-offering secure storage and further parking through an open rear door. The landscaped rear garden is designed for easy maintenance while offering excellent privacy and space for outdoor enjoyment.

This home is a rare find in an ever-popular location and is perfect for discerning buyers seeking style, space, and setting. Early viewing is highly recommended to fully appreciate everything this quality home has to offer. There is the Kings Cliffe Endowment Schtaking children from Reception to Year 6.



1, Oak Lane, Kings Cliffe, Peterborough
Approximate Gross Internal Area
Main House = 166 Sq M/1787 Sq Ft
Garage = 30 Sq M/323 Sq Ft
Total = 196 Sq M/2110 Sq Ft



Please note that the location of doors, windows and other items are approximate and this floorplan is to be used for illustrative purposes only. Unauthorized reproduction is prohibited.

The primary secondary school serving King's Cliffe is Prince William School. Prince William School is an academy located in Oundle, and students from King's Cliffe and surrounding local villages.

Selling your property?

Contact us to arrange a FREE home valuation.

 01733 380956

 Unit 5, The Barns Milton Lane, Castor, PETERBOROUGH, Cambridgeshire , PE5 7DH

 info@hurfords.co.uk

 www.hurfords.co.uk



 SCAN ME



Hurfords is a trading name of Sharman Quinney Holdings Limited which is registered in England and Wales under company number 4174227, Registered Office is Cumbria House, 16-20 Hockliffe Street, Leighton Buzzard, Bedfordshire, LU7 1GN. VAT Registration Number is 500 2481 05.

1: These particulars do not constitute part or all of an offer or contract. 2: The measurements indicated are supplied for guidance only and as such must be considered incorrect. 3: Potential buyers are advised to recheck the measurements before committing to any expense. 4: Hurfords has not tested any apparatus, equipment, fixtures, fittings or services and it is the buyers interests to check the working condition of any appliances. 5: Hurfords has not sought to verify the legal title of the property and buyers must obtain verification from their legal representative. 6: Intending purchasers will be asked to produce identification documentation at a later stage and we would ask your co-operation in order that there will be no delay in agreeing the sale. Ref: HUC104416 - 0002

