



LOCAL AMENITIES

There are a variety of shops, restaurants and public houses and a number of niche retail outlets along the nearby Wellingborough Road. Northampton town centre is approximately one mile distant and the property is conveniently placed for access to Northampton General and St Andrews Hospitals. The Northampton School for Boys is also within walking distance.

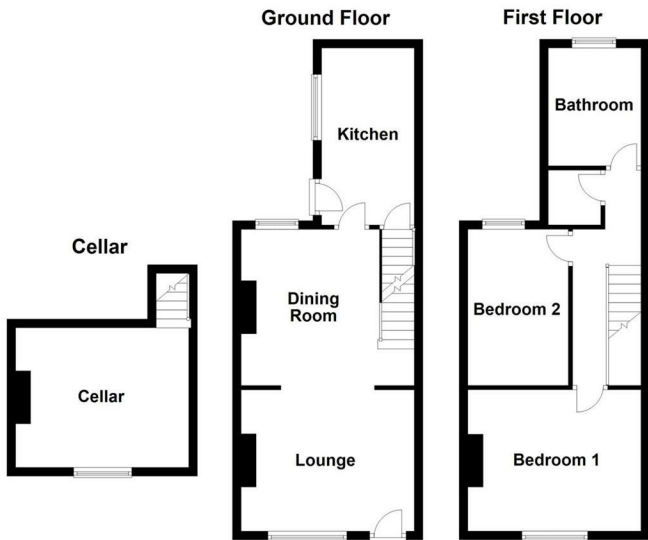
HOW TO GET THERE

From Northampton town centre proceed in a northerly direction along Cheyne Walk and over the traffic light junction into York Road. Turn right into St Edmunds Road and then third right into Pytchley Road. Turn first left into Harold Street where the property is first house on the left

COUNCIL TAX

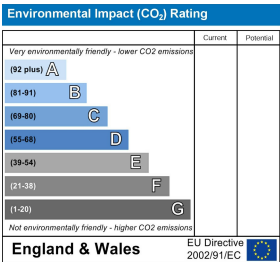
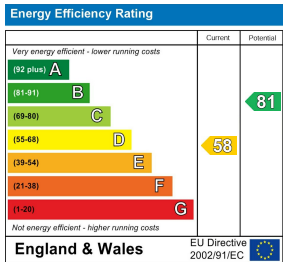
Northampton Council - Band A

DOI 0224



Not to scale. For illustrative purposes only

You may download, store and use the material for your own personal use and research. You may not republish, retransmit, redistribute or otherwise make the material available to any party or make the same available on any website, online service or bulletin board of your own or of any other party or make the same available in hard copy or in any other media without the website owner's express prior written consent. The website owner's copyright must remain on all reproductions of material taken from this website.



Asking Price £195,000 Freehold

A two-bedroom updated end-of-terrace home ideally located close to Northampton General Hospital and the town centre. The property features a four-piece bathroom suite, UPVC double glazing, and gas radiator heating. Accommodation includes a lounge/dining room, a fitted kitchen with integrated cooking appliances, a cellar with power and lighting, two double bedrooms, and a bathroom. Additional benefits include a first-floor walk-in storage cupboard. Outside, there is a fully enclosed rear garden.

1 Harold Street, Northampton, NN1 5QZ

ACCOMMODATION

GROUND FLOOR

LOUNGE

13'1 x 10'9



DINING ROOM

11'10 x 10'3



KITCHEN

13'5 x 7'1

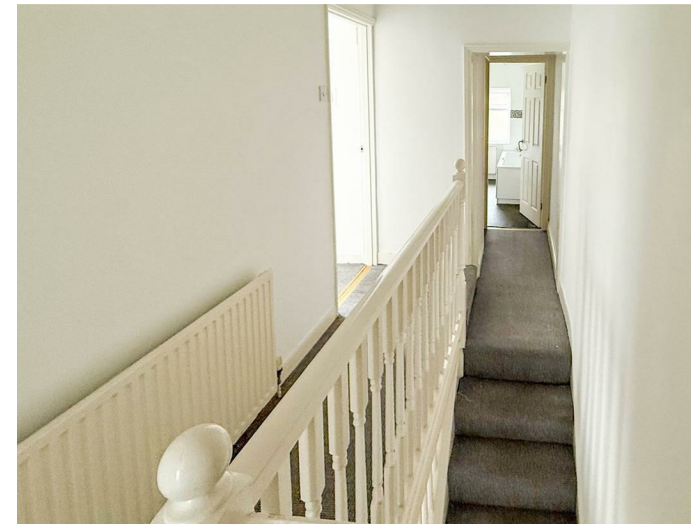


CELLAR

10'7 x 13'2



FIRST FLOOR



BEDROOM ONE

13'2 x 10'9



FAMILY BATHROOM

8'11 x 7'1



BEDROOM TWO

11'11 x 7'8



OUTSIDE

For further information on viewing call 01604 230222