



Guide Price

£825,000

Freehold

4x  2x  3x 

**Woodchurch Road,
Tenterden, Kent, TN30**

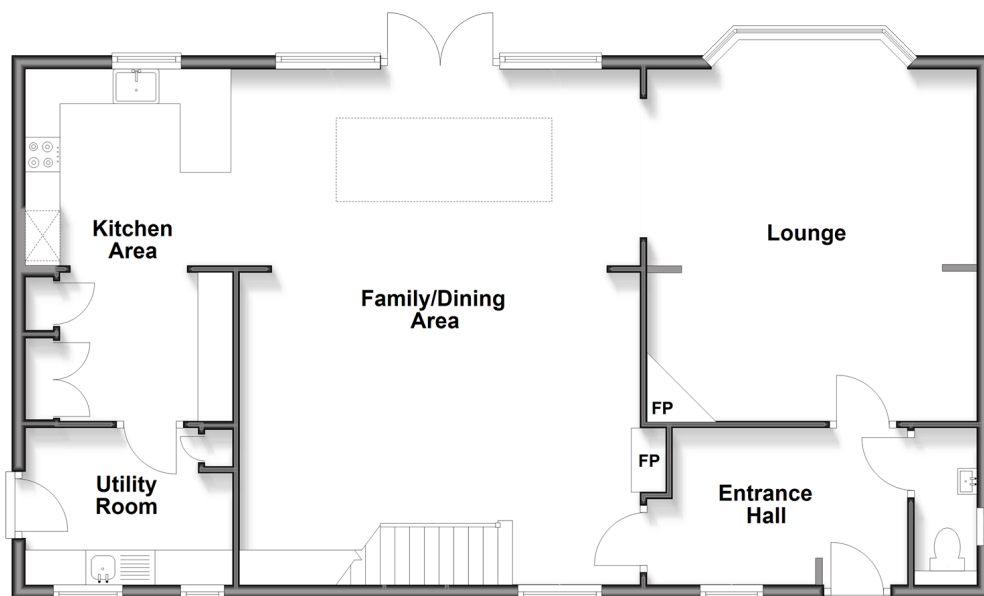
OVER 60?

Secure this property
for up to **59% less!**

Wards
Helping you move forwards

Ground Floor

Approx. 102.8 sq. metres (1106.3 sq. feet)



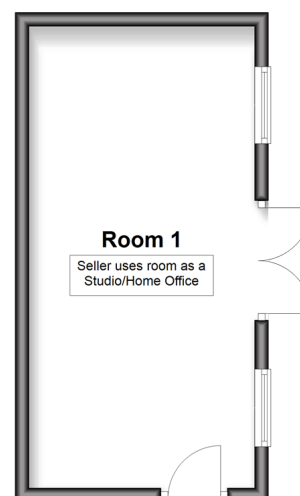
First Floor

Approx. 64.3 sq. metres (692.4 sq. feet)



Outbuilding

Approx. 21.8 sq. metres (234.3 sq. feet)



Accommodation

GROUND FLOOR

Entrance Hall: 12'4 x 8'3 (3.76m x 2.52m)

Cloakroom

Lounge: 18'4 x 15'7 (5.59m x 4.75m)

Family/Dining Area: 24'5 x 18'4 (7.45m x 5.59m)

Kitchen Area: 16'7 x 11'7 (5.06m x 3.53m)

Utility Room: 16'1 x 11'7 (4.91m x 3.53m)

Room 1/Studio/Home Office: 21'9 x 10'11 (6.63m x 3.33m)

FIRST FLOOR

Landing

Bedroom 1: 17'6 x 11'6 (5.34m x 3.51m)

En-Suite Bathroom : 11'8 x 4'8 (3.56m x 1.42m)

Bedroom 3: 10'5 x 8'5 (3.18m x 2.57m)

Bedroom 4: 8'5 x 7'5 (2.57m x 2.26m)

Bedroom 2: 12'1 x 8'5 (3.69m x 2.57m)

Shower Room: 6'11 x 5'9 (2.11m x 1.75m)

OUTSIDE

Front Garden

Rear Garden

Driveway

Car Port

GARDEN OUTBUILDINGS

Octagonal Summer House: 10'0 x 10'0 (3.05m x 3.05m)

Store/Workshop: 16'0 x 10'0 (4.88m x 3.05m)

Garden Shed: 10'0 x 8'0 (3.05m x 2.44m)

Greenhouse: 8'0 x 6'0 (2.44m x 1.83m)



Main features

- Stunning 4 bedroom detached house
- Benefiting from a large rear extension
- Large open plan family/day room
- Detached studio/home office (234.3sq ft)
- Generous private mature sunny rear garden
- In out drive and double car port
- Approx. 167.1 sq. metres (Approx. 1798.7 sq. feet)



Nearest Schools

Primary Schools: Tenterden Junior School 0.5 miles, St Michael's Primary (Tenterden) 0.9 miles, High Halden Primary 2.1 miles, Secondary & Further Education Schools: Homewood School and Sixth Form Centre 0.3 miles, Benenden School 5.5 miles, Cranbrook School 7.1 miles



Transport Information

Train Stations: Appledore 5.6 miles, Pluckley 6.2 miles, Ham Street 6.7 miles



Address

Woodchurch Road, Tenterden, Kent, TN30



Directions

For directions to this property please contact us.



Call Tenterden Branch 01580 766002 ■ wardsofkent.co.uk



- Legal advice should be taken to verify fixtures/fittings, planning, alterations and/or lease details
- Appliances & services are untested, dimensions are approximate and floor plans are not to scale
- Through a Homewise Home For Life Plan people aged 60+ can secure this property for up to 50% less, by purchasing a Lifetime Lease.



14008182/20250926/DS/AQ