



## WHITEHEADS GROVE, SW3

£1,750,000

Share of freehold  
24-hour porter and lift  
Separate storage  
Large eat-in kitchen  
Separate cloakroom  
102 sq meters of lateral living

@marshandparsons  
marshandparsons.co.uk

MARSH &  
PARSONS

# ABOUT THE PROPERTY

An elegant (102 sq meter) two bedroom apartment set within the prestigious Cranmer Court and, a distinguished period mansion building (with lift) in the heart of Chelsea.

The property offers beautifully proportioned accommodation, including a bright and spacious reception room ideal for both entertaining and everyday living, a sleek, well-appointed kitchen, and two generously sized bedrooms with extensive built-in storage throughout. A contemporary bathroom is complemented by a separate guest cloakroom, enhancing both comfort and practicality.

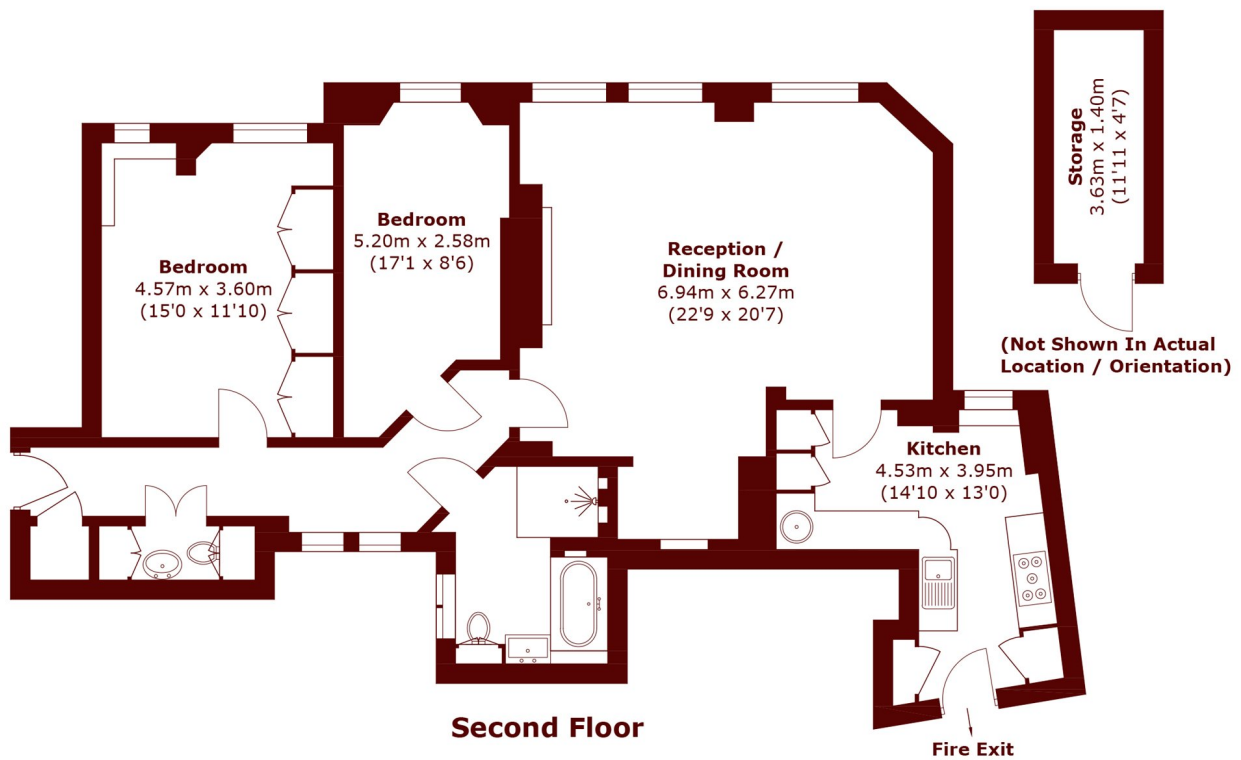








# STEP INSIDE WHITEHEADS GROVE



Total area (approx.): 102.3 sq. m (1,101.1 sq. ft)  
Storage: 5.2 sq. m (56.0 sq. ft)

Chelsea  
020 7590 0800

Energy Rating: D We aim to make our particulars both accurate and reliable. However, they are not guaranteed; nor do they form part of an offer or contract. If you require clarification on any points then please contact us, especially if you're traveling some distance to view. Please note that appliances and heating systems have not been tested and therefore no warranties can be given as to their good working order

MARSH &  
PARSONS