



OAKFIELD



Lyewood Way, Uckfield, TN22 5GL

Price Guide £500,000



Lyewood Way, Uckfield, TN22 5GL

Price Guide of £500,000 - £525,000

Prepare to be impressed by this exceptional contemporary home, arranged over three beautifully designed floors and set in a truly unique position within Fernley Park. Tucked away to offer a real sense of privacy and seclusion, the property is approached via a generous driveway leading to and alongside a detached garage, providing ample parking for four vehicles.

As you make your way to the front door, the scale and quality of the garden immediately sets this home apart. A standout feature, the garden benefits from an additional parcel of land acquired by the current owners, believed to create the largest plot on the development (at 0.15 of an acre). Backing directly onto a private woodland area, it offers an enviable level of peace, privacy and natural beauty—perfect for entertaining, relaxing, and providing a safe, open space for children to play.

The front door opens into a welcoming entrance hall with a modern cloakroom. From here, doors lead to a spacious, double-aspect lounge, flooded with natural light and featuring a stylish fireplace with gas fire. A further door opens into the heart of the home: a stunning open-plan kitchen, dining and family room, ideal for entertaining friends and family or unwinding while enjoying uninterrupted views over the garden.

The first floor hosts the principal bedroom, complete with fitted wardrobes and a generous ensuite shower room, alongside is an additional double bedroom and a contemporary family bathroom. The second floor offers two further double bedrooms, serviced by a large shower room. All bedrooms benefit from fitted wardrobes and furniture, enhancing both style and practicality.

This is a superb family home that also perfectly suits professionals who enjoy entertaining—offering space, privacy and modern living in a truly special setting.





Living Room

17'0" x 10'5" (5.18m x 3.18m)

Kitchen/Dining Room

17'0" x 10'5" (5.18m x 3.18m)

Family Room

12'6" x 7'4" (3.81m x 2.24m)

WC

Bedroom One

12'6" x 10'5" (3.81m x 3.18m)

Bedroom Two

12'2" x 9'6" (3.71m x 2.90m)

Bedroom Three

14'3" x 9'8" (4.34m x 2.95m)

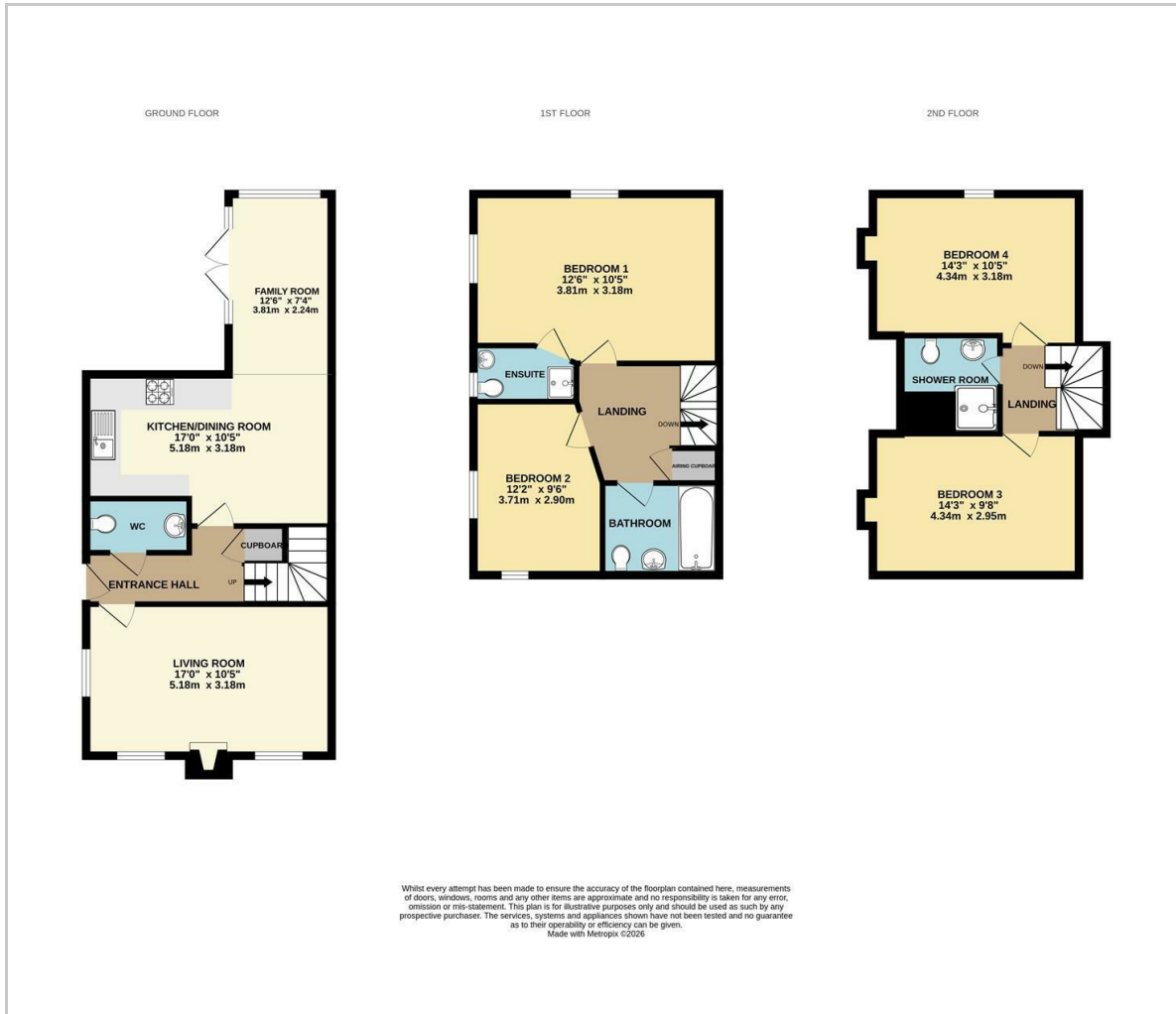
Bedroom Four

14'3" x 10'5" (4.34m x 3.18m)

Council Tax Band E - £3188 Per Annum



Floor Plan

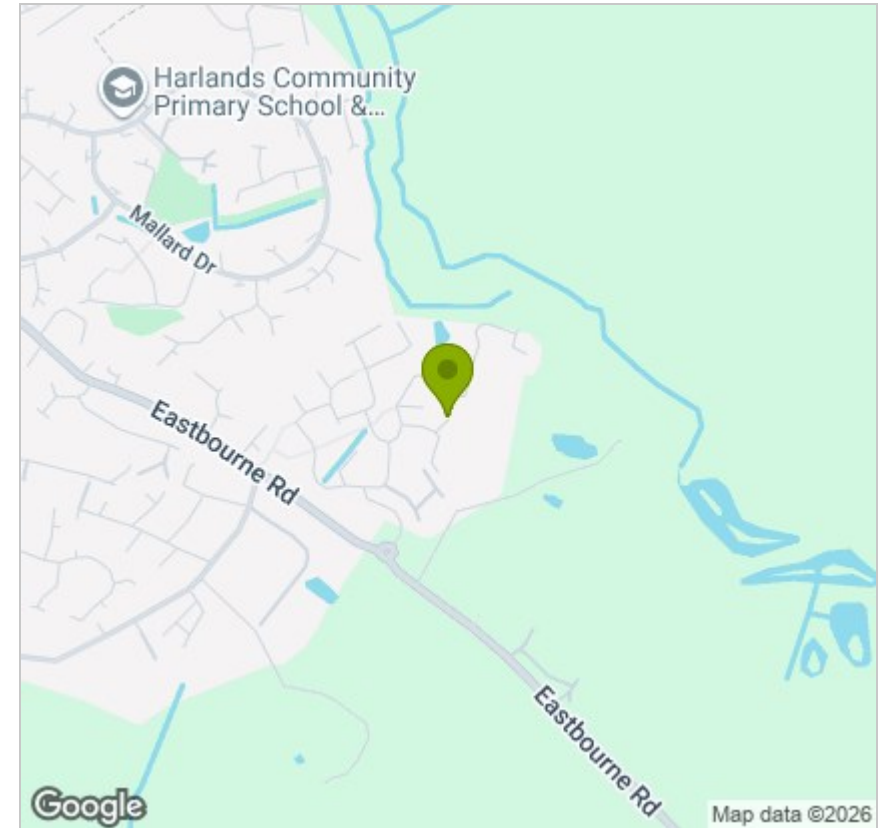


Viewing

Please contact us on 01825 762132 if you wish to arrange a viewing appointment for this property or require further information.

These particulars, whilst believed to be accurate are set out as a general outline only for guidance and do not constitute any part of an offer or contract. Intending purchasers should not rely on them as statements of representation of fact, but must satisfy themselves by inspection or otherwise as to their accuracy. No person in this firm's employment has the authority to make or give any representation or warranty in respect of the property.

Area Map



Energy Efficiency Graph

