

# The Matching Laundry Harlow Road

Matching Tye, Harlow

Guide Price £1,100,000

Council Tax band: G

Tenure: Freehold

- Period home
- Surrounded by Essex countryside
- Gated driveway with spacious garage
- Handcrafted shaker kitchen with separate utility
- Potential to extend (STP)
- Close to the M11
- Private spacious garden with stunning rural views



Hammond  
& Smith

**Entrance Hall**

16' 3" x 10' 7" (4.96m x 3.22m)

**Living Room**

16' 10" x 18' 1" (5.13m x 5.52m)

**Kitchen**

13' 8" x 20' 0" (4.16m x 6.10m)

**Utility Room**

3' 9" x 8' 8" (1.14m x 2.63m)

**Dining Room**

12' 6" x 10' 5" (3.82m x 3.18m)

**WC**

**Family Room**

11' 6" x 13' 9" (3.51m x 4.18m)

**Bathroom**

11' 6" x 9' 2" (3.51m x 2.79m)

**Study**

10' 6" x 11' 11" (3.19m x 3.62m)

**Bedroom**

15' 6" x 8' 7" (4.73m x 2.62m)

**Bedroom**

16' 10" x 12' 0" (5.12m x 3.65m)

**Shower Room**

**Bedroom**

16' 10" x 12' 0" (5.12m x 3.65m)

**Bedroom**

12' 8" x 8' 8" (3.87m x 2.65m)

**Bedroom**

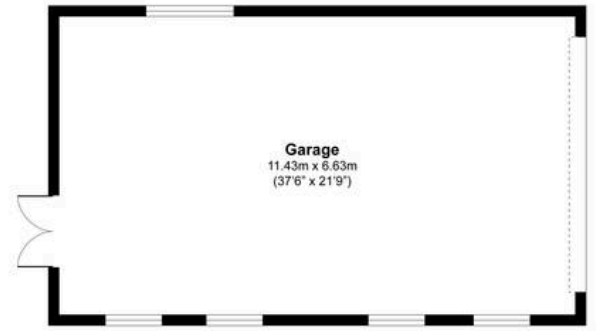
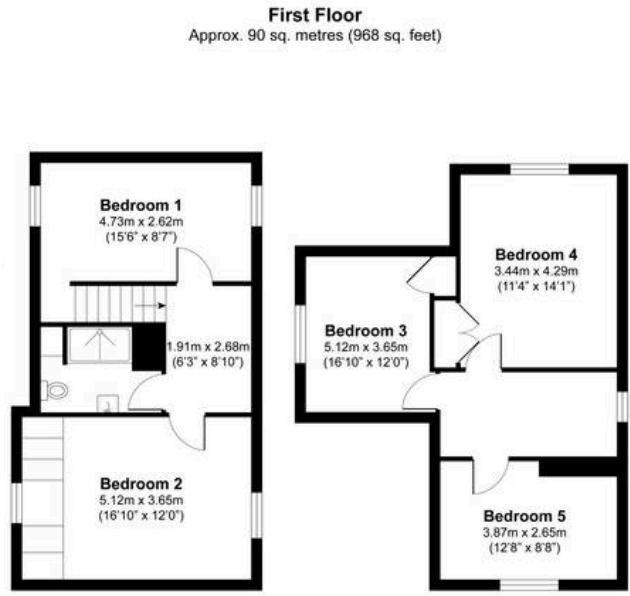
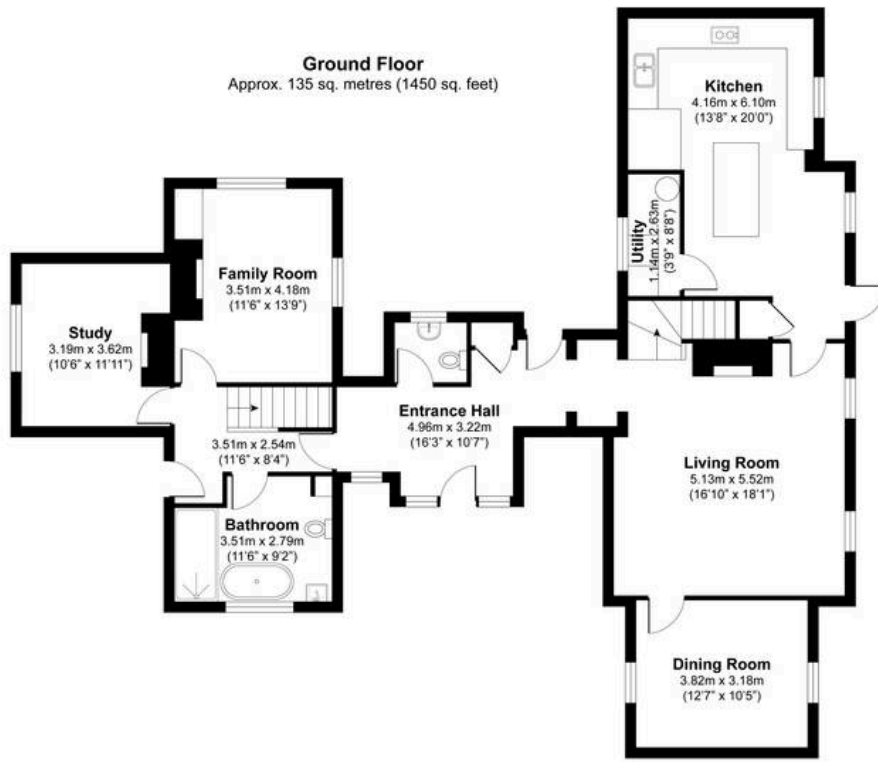
11' 3" x 14' 1" (3.44m x 4.29m)

**Garage**

37' 6" x 21' 9" (11.43m x 6.63m)







**Total area (including garage): approx. 301 sq. metres (3234 sq. feet)**

Main property area: approximately 225 sq. metres (2418 sq. feet)

Garage: approximately 76 sq. metres (816 sq. feet)

THE FLOORPLAN IS FOR ILLUSTRATIVE PURPOSES ONLY AND IS NOT TO SCALE. Measurements and features are approximate and may differ from the actual property. Verify all details independently; no liability is accepted for errors or omissions.