



# Spital Square

London, E1

£4,250 per month  
(£980.77 per week)

A superb three bedroom apartment, with 2 bathrooms and a large wrap around terrace situated just moments from Spitalfields and spanning over 1000 sq ft.



# Spital Square

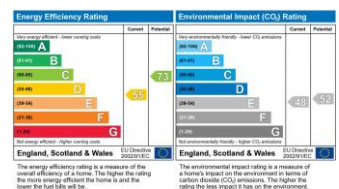
## London, E1

- Three Double Bedroom
- Two Bathrooms
- Wrap Around Terrace
- Spitalfields Location



A superb three bedroom apartment, with 2 bathrooms and a large wrap around terrace situated just moments from Spitalfields. This truly stunning apartment comprising of three double bedrooms, two with fitted wardrobes and a master one en-suite, a grand living room with beautiful parquet flooring, large modern separate kitchen, double height ceilings and stylish modern white interiors throughout. The property is conveniently located a short walk to the City and benefits from an excellent array of amenities on its very doorstep.

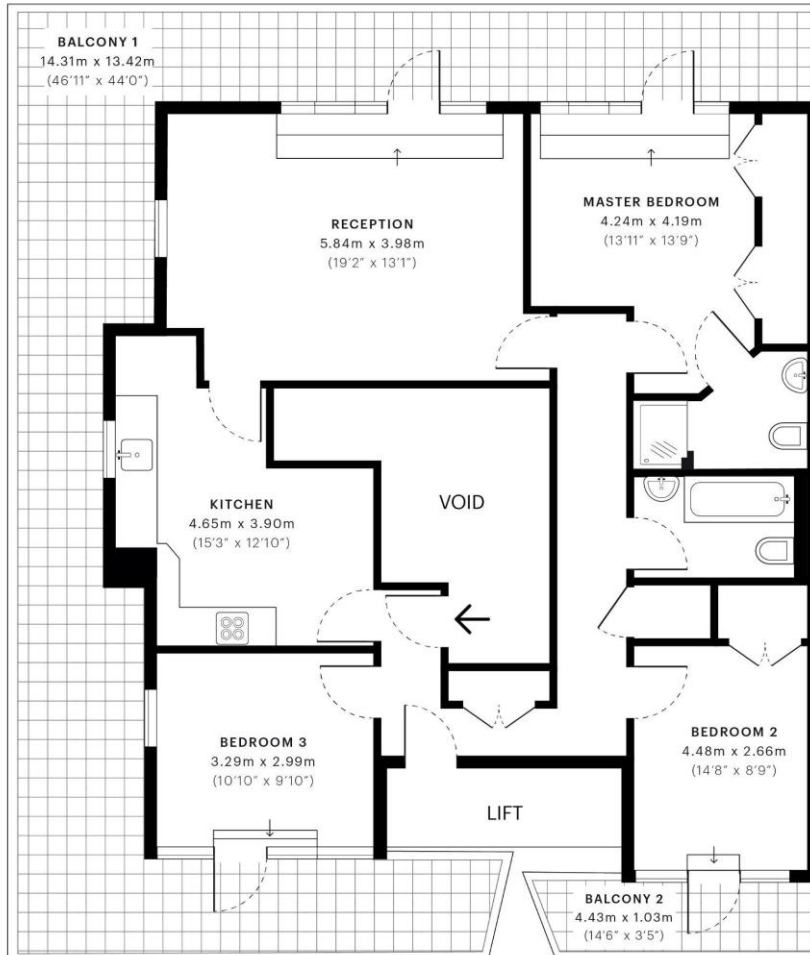
**Minimum Term:** 12 months  
**Deposit Required:** £4,903.85  
**Local Authority:** Tower Hamlets  
**Council Tax Band:** G  
**EPC Rating:** D  
**Furnished**



### Chestertons Tower Bridge Lettings


220 Tower Bridge Road  
 Tower Bridge  
 London  
 SE1 2UP  
 towerbridge@chestertons.co.uk  
 02073576911  
 chestertons.co.uk

Additional tenant charges apply (fees apply to non-AST tenancies only)  
 Tenancy Agreement Fee: £300  
 References per Tenant/Guarantor: £60  
 Inventory check (approx. £100 – £250 inc. VAT)  
[chestertons.co.uk/property-to-rent/applicable-fees](http://chestertons.co.uk/property-to-rent/applicable-fees)



 **GROSS INTERNAL AREA**  
The footprint of the property  
95.07 Sqm / 1023.33 Sqft

 **NET AREA (INTERNAL)**  
Excludes walls and external features  
89.24 Sqm / 960.58 Sqft

 **EXTERNAL STRUCTURAL FEATURES**  
Balconies, terraces, verandas etc.  
48.87 Sqm / 526.04 Sqft

 **RESTRICTED HEAD HEIGHT**  
Limited use area under 1.5m  
0.00 Sqm / 0.00 Sqft



Spec floor plans are produced in accordance with Royal Institution of Chartered Surveyors Property Measurement Standards. If you intend to rely on any measurement in a transaction you should perform your own checks. Plot/Gardens illustrative only and excluded from all area calculations.

IPMS 3B RESIDENTIAL  
146.31 Sqm / 1574.88 Sqft

SPEC ID  
5c3c619433f9b80a0438dc



IPMS 3C RESIDENTIAL  
140.49 Sqm / 1512.23 Sqft

