



DERBYSHIRE'S
— *Estate Agents* —

26 Halcombe Estate, Chard, TA20 2DS

Situated on the outskirts of Chard town centre, this spacious three double bedroom ex-council mid-terrace property offers excellent potential for buyers looking to modernise and add value.

The accommodation briefly comprises an entrance porch, entrance hall, ground floor WC, kitchen, and a generous lounge/diner to the ground floor. Upstairs, the property benefits from three well-proportioned double bedrooms and a family bathroom.

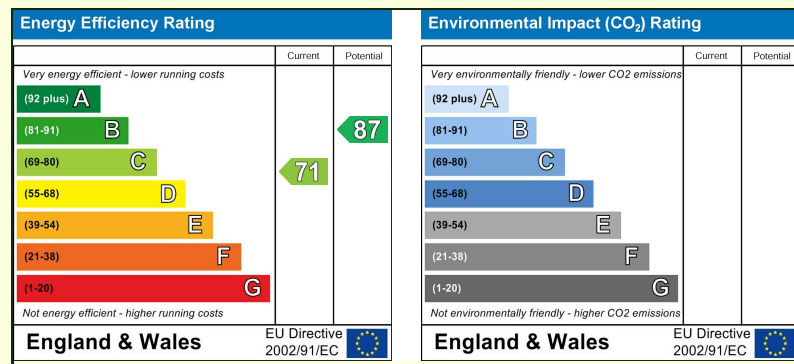
Outside, there is an enclosed rear garden along with the added advantage of a garage to the rear of the property.

Although the property is in need of general updating throughout, it already benefits from gas central heating and double glazing, making it an ideal opportunity for first-time buyers, investors, or families seeking a home they can put their own stamp on.

Conveniently located close to local amenities and transport links, early viewing is advised.

Council Tax Band A

EPC Rating C



- Three double bedrooms
 - Garage
- Double aspect lounge/dining room
 - Council tax band A
 - Outskirts of town

26 Halcombe Estate, Chard, TA20 2DS
Asking Price £180,000

THREE BEDROOM TERRACE HOUSE

Situated on the outskirts of Chard town centre, this spacious three double bedroom ex-council mid-terrace property offers excellent potential for buyers looking to modernise and add value.

The accommodation briefly comprises an entrance porch, entrance hall, ground floor WC, kitchen, and a generous lounge/diner to the ground floor. Upstairs, the property benefits from three well-proportioned double bedrooms and a family bathroom.

Outside, there is an enclosed rear garden along with the added advantage of a garage to the rear of the property.

Although the property is in need of general updating throughout, it already benefits from gas central heating and double glazing, making it an ideal

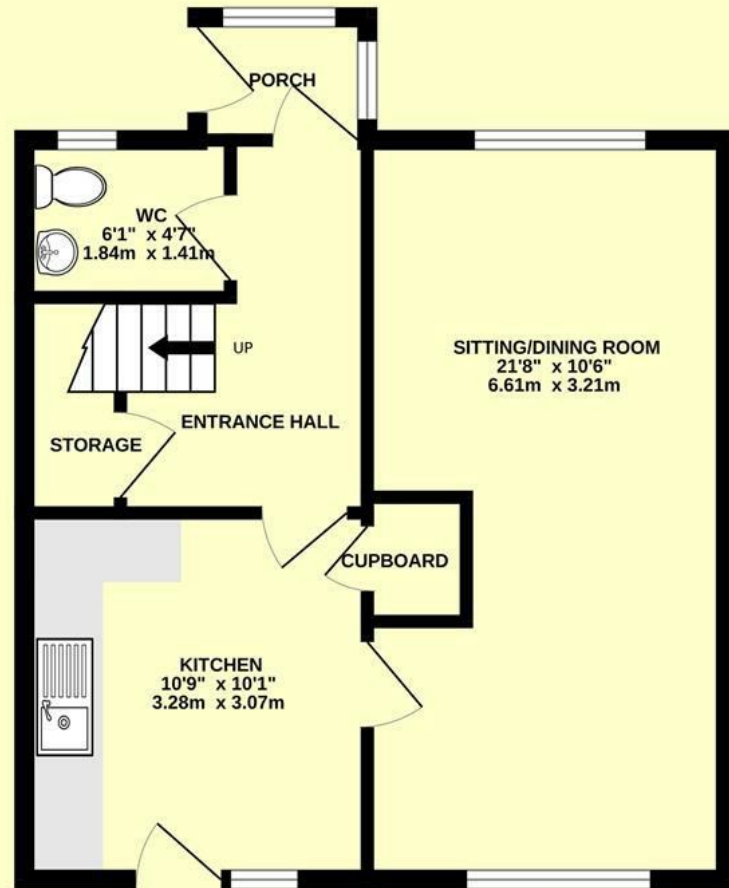
opportunity for first-time buyers, investors, or families seeking a home they can put their own stamp on.

Conveniently located close to local amenities and transport links, early viewing is advised.

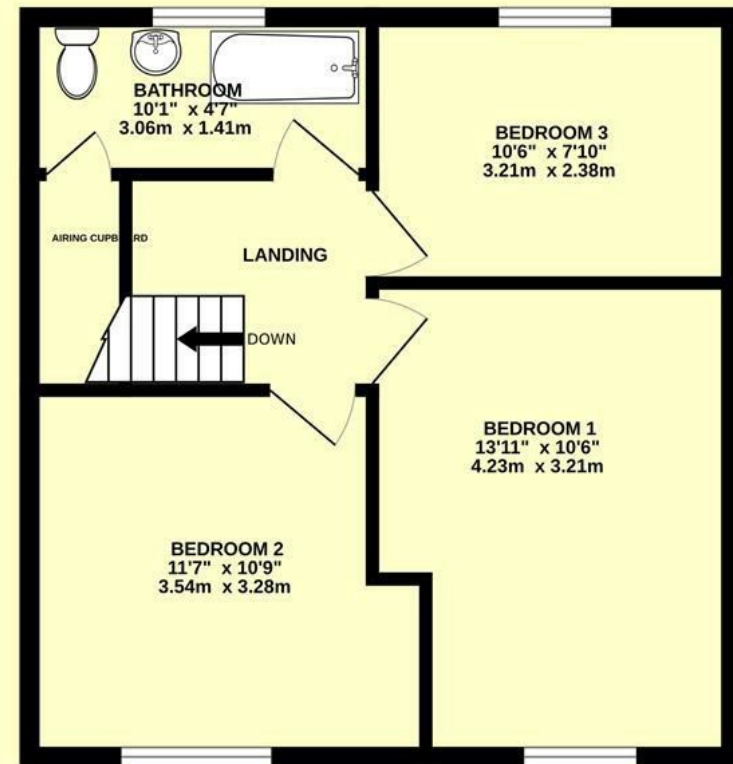
Council Tax Band A

EPC Rating C

GROUND FLOOR
464 sq.ft. (43.1 sq.m.) approx.



1ST FLOOR
446 sq.ft. (41.4 sq.m.) approx.



TOTAL FLOOR AREA : 910 sq.ft. (84.6 sq.m.) approx.

Whilst every attempt has been made to ensure the accuracy of the floorplan contained here, measurements of doors, windows, rooms and any other items are approximate and no responsibility is taken for any error, omission or mis-statement. This plan is for illustrative purposes only and should be used as such by any prospective purchaser. The services, systems and appliances shown have not been tested and no guarantee as to their operability or efficiency can be given.

Made with Metropix ©2026



Directions -





DERBYSHIRE'S
Estate Agents

11, High Street, Chard, Somerset, TA20 1QF
www.derbyshires.net 01460 63600