



**Flat 48, Hinchley Manor Manor Road North, Hinchley Wood**  
Esher

Offers in Region of **£425,000**

**newton**  
huxley.

# Flat 48

Hinchley Manor Manor Road North, Esher

Modern 2 bed, 2 bath apartment for over 55s in gated development with lift, owners' lounge, on-site management, near shops and transport. Chain free and in excellent condition.

Council Tax band: E

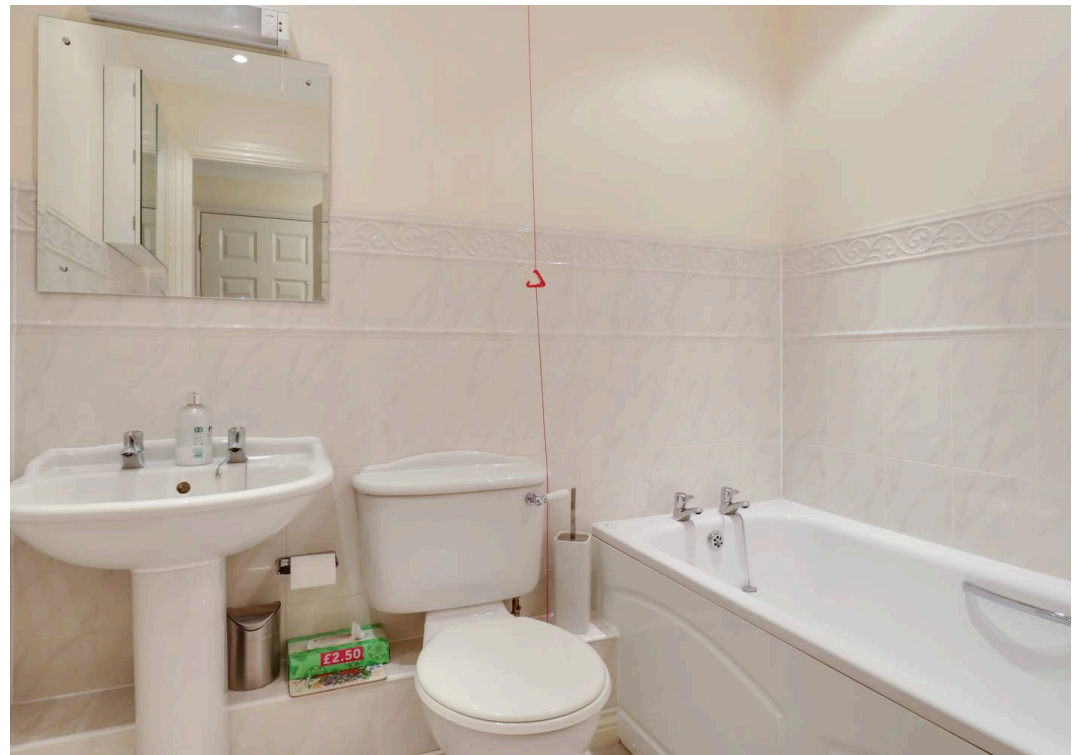
Tenure: Leasehold

EPC Energy Efficiency Rating: B

EPC Environmental Impact Rating:

- Premium Gated Development
- Chain Free
- Excellent Condition Throughout
- Over 55's
- 2 Bedroom 2 Bathroom
- On-Site Management
- Owners' Lounge
- Short Walk To Local Shops And Transport Links
- Lift Access
- EPC B





## Hinchley Manor

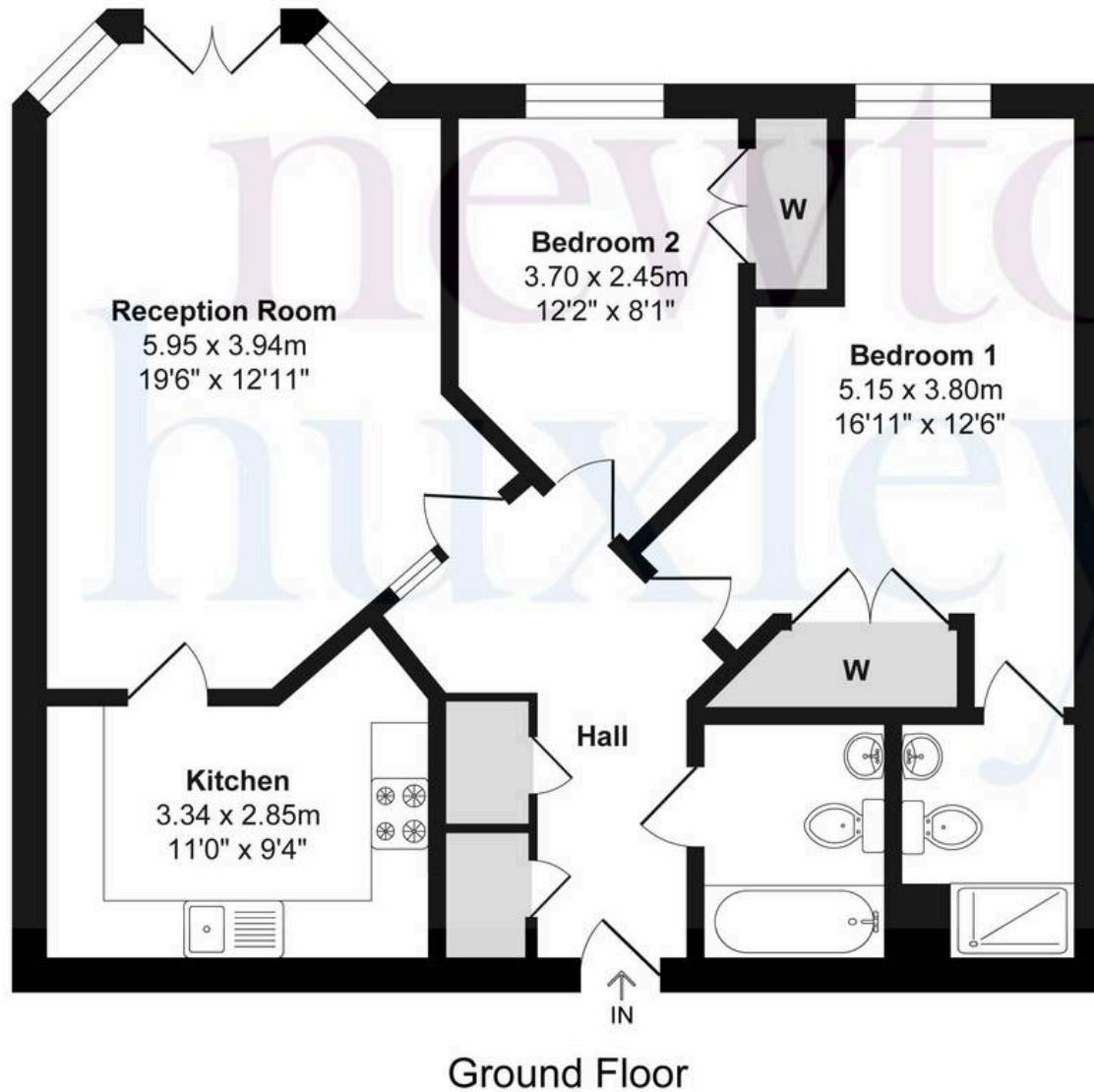
Total Area: 67.50 m<sup>2</sup> ... 726.56 ft<sup>2</sup>

FOR ILLUSTRATIVE PURPOSE ONLY.

Whilst every attempt has been made to ensure the accuracy of the floor plan shown, all measurements, positioning, fixtures, features, fittings and any other data shown are an approximate interpretation for illustrative purposes only and are not to scale.

No responsibility is taken for any error, omission, miss-statement or use of data shown.

newton  
huxley.



newton  
huxley.