



LYHAM ROAD, SW2

£450,000

- One bedroom
- Ground floor
- Spacious reception
- Modern finish
- Private garden
- Energy rating: C





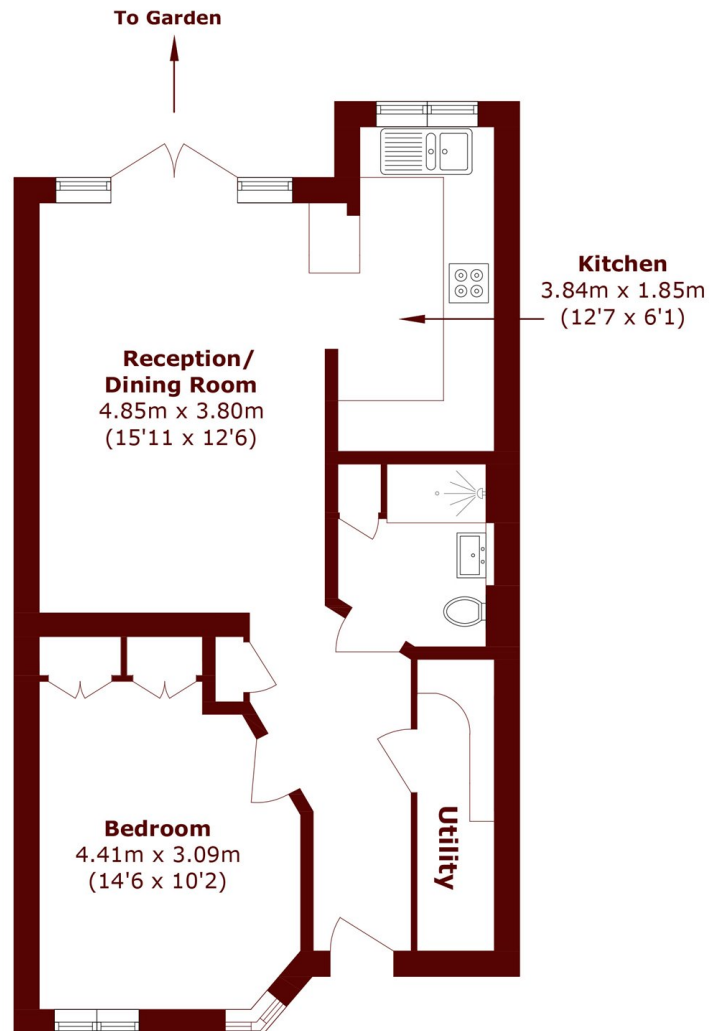
ABOUT THE HOME

A superb one bedroom ground floor garden flat on a popular residential road close to local shops. The property benefits from a private entrance, a west-facing private garden and is offered to the market chain free with a long lease.

Lyham Road is well-positioned for bus services from Kings Avenue (0.3 mile) and Brixton Hill (0.6 mile) to Clapham Common (Northern line) and Brixton (Victoria line) Underground stations, while Clapham North (Northern line) Underground and Clapham High Street (Windrush line) Overground stations are approximately 15 mins by bus. The boutiques, bars, cafés and leisure amenities of Abbeville Road and Clapham Common are also close at hand.







Total Area (approx.): 50.9 sq. m (547.8 sq. ft)

JACKSONS CLAPHAM

73 Abbeville Road, London,

SW4 9JN

Sales: 020 8487 3177

Lettings: 020 8487 3178

Energy Rating: C We aim to make our particulars both accurate and reliable. However they are not guaranteed; nor do they form part of an offer or contract. If you require clarification on any points then please contact us, especially if you're traveling some distance to view. Please note that appliances and heating systems have not been tested and therefore no warranties can be given as to their good working order.