



**Guide Price**  
**£425,000**

**Freehold**

3x  1x  2x 

**Maybury Close,  
Tadworth, Surrey, KT20**

**OVER 60?**

Secure this property  
for up to **59% less!**

**cubitt&west**  
Helping you move forwards





## Main features

- 3 bed end of terrace house
- Cul De Sac Location
- Useful Garden Room
- Central heating and Double Glazing throughout
- Garage and Large Driveway

## Accommodation

### GROUND FLOOR

Entrance

Kitchen: 10'0 x 5'0 (3.05m x 1.53m)

Dining Room: 11'9 x 9'11 (3.58m x 3.02m)

Lounge: 12'2 x 10'10 (3.71m x 3.30m)

Cloakroom

Attached Garage

### FIRST FLOOR

Bedroom 1: 18'0 x 9'5 (5.49m x 2.87m)

Bedroom 2: 10'8 x 10'0 (3.25m x 3.05m)

Bedroom 3: 11'0 x 7'1 (3.36m x 2.16m)

Bathroom

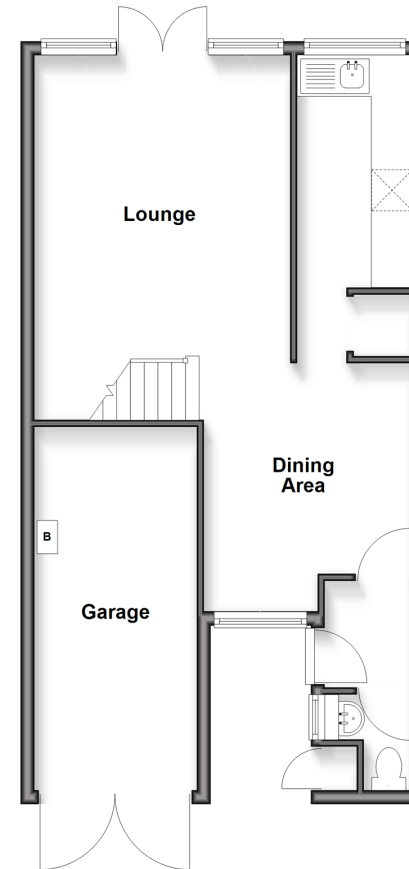
### OUTSIDE

Garden

Driveway

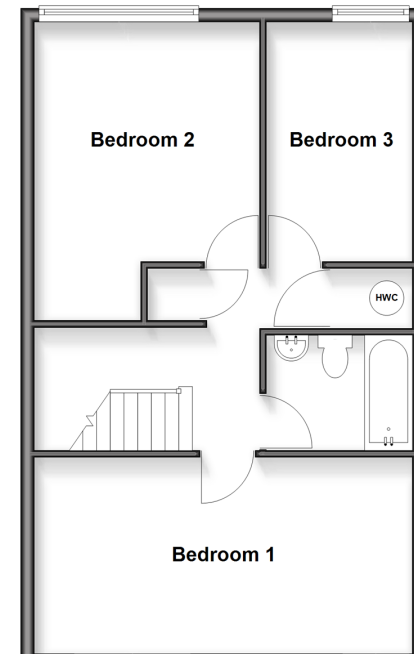
### Ground Floor

Approx. 53.9 sq. metres (579.8 sq. feet)



### First Floor

Approx. 50.5 sq. metres (543.6 sq. feet)



**Call Banstead - 01737 352233 ■ [cubittandwest.co.uk](http://cubittandwest.co.uk)**

- Legal advice should be taken to verify fixtures/fittings, planning, alterations and/or lease details
- Appliances & services are untested, dimensions are approximate and floor plans are not to scale
- Through a Homewise Home For Life Plan people aged 60+ can secure this property for up to 50% less, by purchasing a Lifetime Lease.



20104880/20251101/OK/OK