



Bloomsbury Square

Bloomsbury, WC1A

£3,500 per month
(£807.69 per week)

A stylish one bedroom apartment benefiting from stunning viewings overlooking the desirable Bloomsbury Square. Comprising of a semi open-plan kitchen reception room which is flooded with natural light and spacious bedroom with ample storage.

CHESTERTONS



Bloomsbury Square

Bloomsbury, WC1A

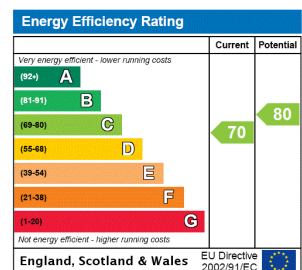
- Stunning Period Conversion
- Hardwood Flooring
- Multi-Room Sound System and Mood Lighting Throughout
- Contemporary Kitchen & Bathroom



A stylish one bedroom apartment benefiting from stunning viewings overlooking the desirable Bloomsbury Square. Comprising of a semi open-plan kitchen reception room which is flooded with natural light, a spacious bedroom with ample storage and a contemporary bathroom. Finished to an excellent standard with wooden flooring throughout.

Bloomsbury Square is well located for The British Museum, The Royal Opera House, Covent Garden, UCL and LSE. Holborn, Tottenham Court Road and Russell Square Underground Stations are nearby.

Minimum Term: 12 months
Deposit Required: £4,038.46
Local Authority: Camden
Council Tax Band: F
EPC Rating: C
Part Furnished

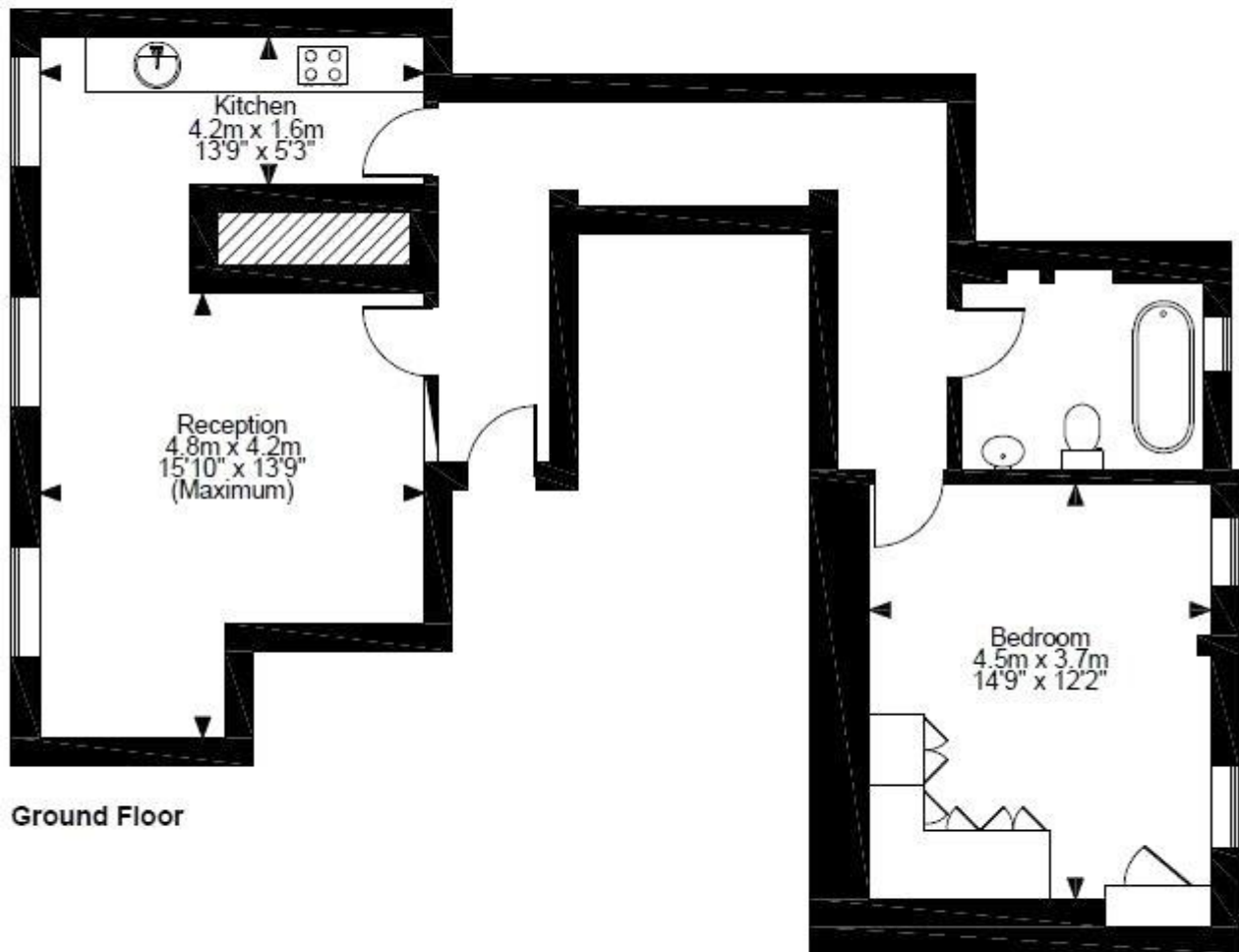


Chestertons Covent Garden Lettings

196 Shaftesbury Avenue
 Covent Garden
 London
 WC2H 8JF
 coventgardenlettingsusers@chestertons.co.uk
 02030408400
 chestertons.co.uk

Additional tenant charges apply (fees apply to non-AST tenancies only)
 Tenancy Agreement Fee: £300
 References per Tenant/Guarantor: £60
 Inventory check (approx. £100 – £250 inc. VAT)
chestertons.co.uk/property-to-rent/applicable-fees

Bloombury Square, WC1A
Approximate Gross Internal Area
734 Sq Ft/68 Sq M



FOR ILLUSTRATIVE PURPOSES ONLY - NOT TO SCALE
The position & size of doors, windows, appliances and other features are approximate only.
© ehouse. Unauthorised reproduction prohibited. Drawing ref. dig/8142502/OHW