



**Lamorna Grove, Worthing, BN14 9BJ**

**£250,000**



**Property Type:** Flat

**Bedrooms:** 2

**Bathrooms:** 1

**Receptions:** 1

**Tenure:** Leasehold

- Top Floor Flat
- Two Double Bedrooms
- Spacious South Facing Lounge
- Kitchen
- Balcony
- Gas Central Heating
- Loft Space
- Garage
- Chain Free
- Popular Broadwater Village

A well presented and spacious two double bedroom apartment with South aspect lounge, kitchen and balcony. The property benefits a garage and 123 years remaining of the lease.



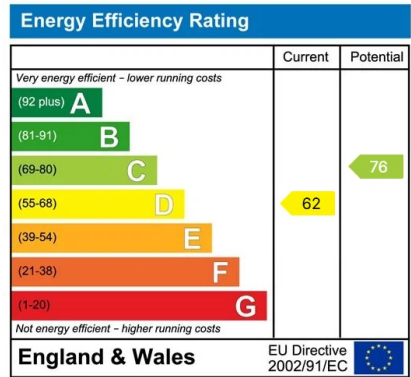
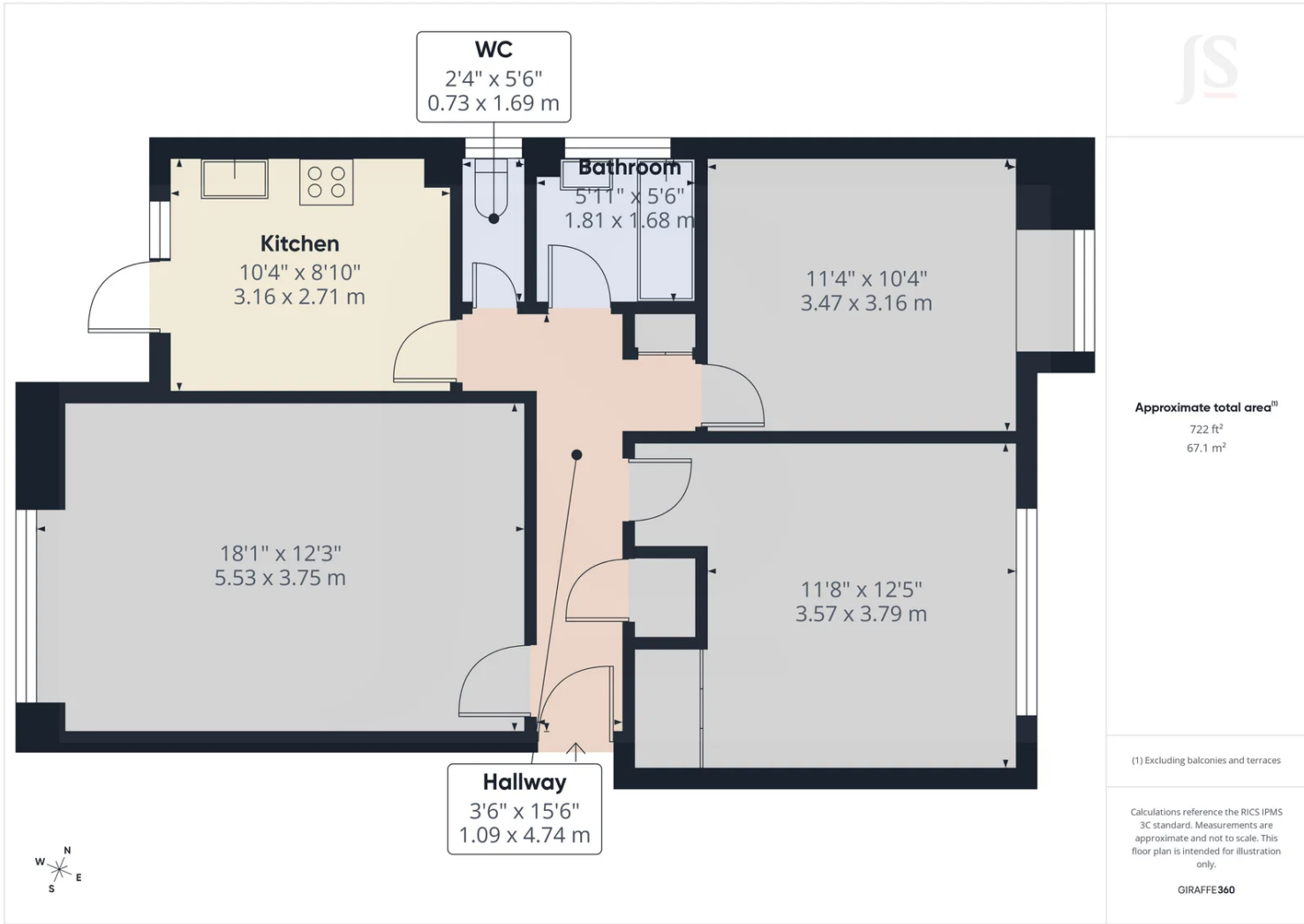


This top-floor flat offers spacious, light-filled rooms throughout. It features a south-facing lounge/diner, two generously sized double bedrooms, and a fitted kitchen with space for appliances. The kitchen also provides access to a private, south-facing balcony. In addition, there is a bathroom with a fitted suite and a handy loft space, ideal for extra storage.

Outside, the property is set within well-maintained communal gardens, mainly laid to lawn, providing a pleasant and green surrounding. There is also residents' parking available, along with the added benefit of a private garage featuring an up-and-over door.

In a highly desirable location, With Broadwater Green close by, you have immediate access to lush green spaces, perfect for family outings and leisurely strolls. A short walk from the property are the local shops and charming cafes, this home offers the perfect blend of convenience and tranquility, making it an ideal setting for family life.





Whilst we endeavour to make our properties particulars accurate and reliable, we have not carried out a detailed survey. If there is any point which is of particular importance to you, please contact the office and we will be pleased to check the information for you, particularly if you are contemplating travelling some distance. Whilst every effort has been made to ensure that any floorplans are correct and drawn as accurately as possible, they are to be used for layout and identification purposes only and are not drawn to scale. The services, where applicable, including electrical equipment and other appliances have not been tested and no warranty can be given that they are in working order, even where described in these particulars. Carpets, curtains, furnishing, gas fires, electrical goods/ fittings or other fixtures, unless expressly mentioned, are not necessarily included with the property.