



Parc Panteg,

guide price £325,000 to £350,000

- Guide Price £325,000 TO £350,000
- PRIMARY EN-SUITE
- GROUND FLOOR CLOAKROOM AND UTILITY
- DRIVEWAY AND GARAGE
- LARGE ENCLOSED GARDEN
- EPC Rating: C



4 2 2

Pinkmove

01633 746088
team@pinkmove.co.uk



About the property

This immaculate property boasts four double bedrooms, each offering ample living space. The master bedroom is enhanced by an en-suite and built-in wardrobes, while the second bedroom also features built-in wardrobes. The remaining two bedrooms are generously proportioned and provide a comfortable living environment.

On the ground floor, the property benefits from a utility room off the kitchen, which also enjoys plenty of natural light. There are two reception rooms: a spacious living room, perfect for family gatherings and a separate dining room for entertaining or family meals. A ground floor cloakroom adds to the home's convenience.

Externally, the property enjoys a large, enclosed garden, a perfect playground for children and a sanctuary for adults. There is also the added benefit of a garage and additional parking space, offering plenty of room for vehicles or additional storage.

The property is strategically located with excellent public transport links and is near local amenities and schools. The strong local community further enhances the appeal of this property.

In conclusion, this property offers a unique blend of space, comfort, and convenience. It is a substantial family home in a desirable location, ready to move in and enjoy.

Accommodation

Hall

Living Room

21' 5" x 11' 5" (6.53m x 3.48m)

Kitchen

11' 3" x 8' 8" (3.43m x 2.64m)

Utility Room

4' 11" x 6' 8" (1.50m x 2.03m)

Dining Room

9' 6" x 8' 8" (2.90m x 2.64m)

Cloakroom

5' 8" x 3' 1" (1.73m x 0.94m)



Bedroom 2

12' x 8' 7" (3.66m x 2.62m)

Bedroom 3

8'10 x 8'7

Bedroom 4

11'8 x 12'6

Family Bathroom

6'9 x 5'8

Landing

Bedroom 1

11' 10" x 8' 8" (3.61m x 2.64m)

En-Suite

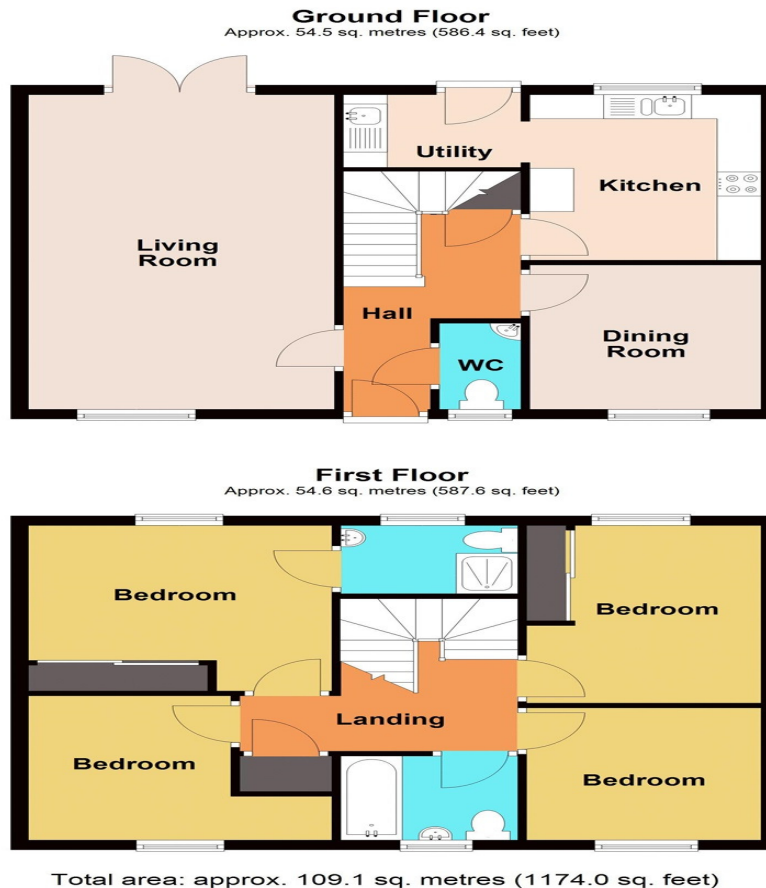
4' 11" x 6' 7" (1.50m x 2.01m)

01633 746088

team@pinkmove.co.uk

Pinkmove

Floorplan



Important Information

Note while we endeavour to make our sales details accurate and reliable, if there is any point which is of particular interest to you, please contact the office and we will be pleased to confirm the position for you. We have not personally tested any apparatus, equipment, fixtures, fittings or services and cannot verify they are in working order or fit for their purposes. Nothing in these particulars is intended to indicate that carpets or curtains, furnishings or fittings, electrical goods (whether wired or not). Gas fires or light fittings or any other fixtures not expressly included form part of the property offered for sale. This computer generated Floorplan, if applicable, is intended as a general guide to the layout and design of the property. It is not to scale and should not be relied upon for dimensions. Tenure: We cannot confirm the tenure of the property as we have not had access to the legal documents. The buyer is advised to obtain verification from their solicitor or surveyor.

Peter Alan Limited is registered in England and Wales under company number 2073153, Registered Office is Cumbria House, 16-20 Hockliffe Street, Leighton Buzzard, Bedfordshire, LU7 1GN. VAT Registration Number is 500 2481 05. For activities relating to regulated mortgages and non-investment insurance contracts, Peter Alan Limited is an appointed representative of Connells Limited which is authorised and regulated by the Financial Conduct Authority. Connells Limited's Financial Services Register number is 302221. Most buy-to-let

