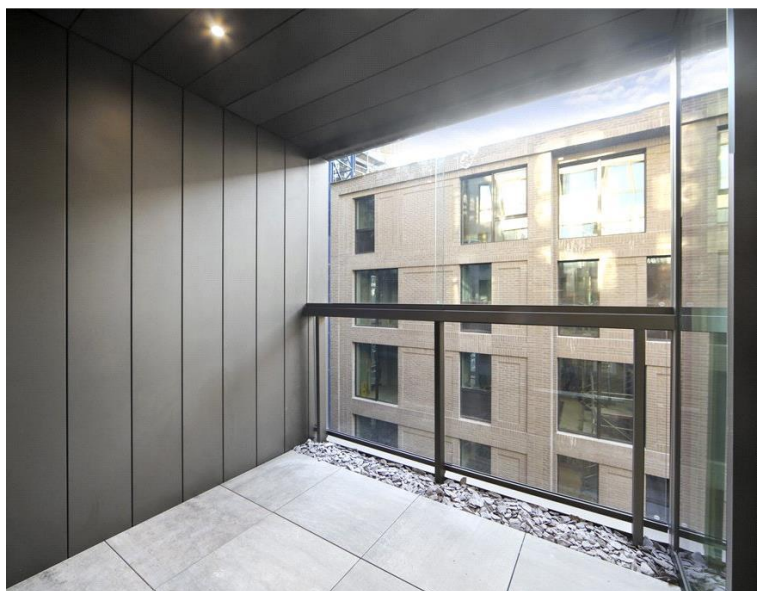


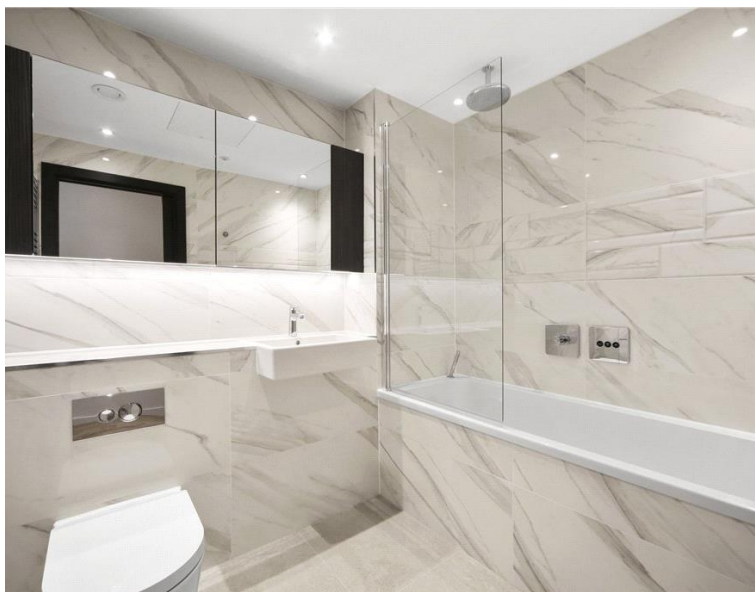
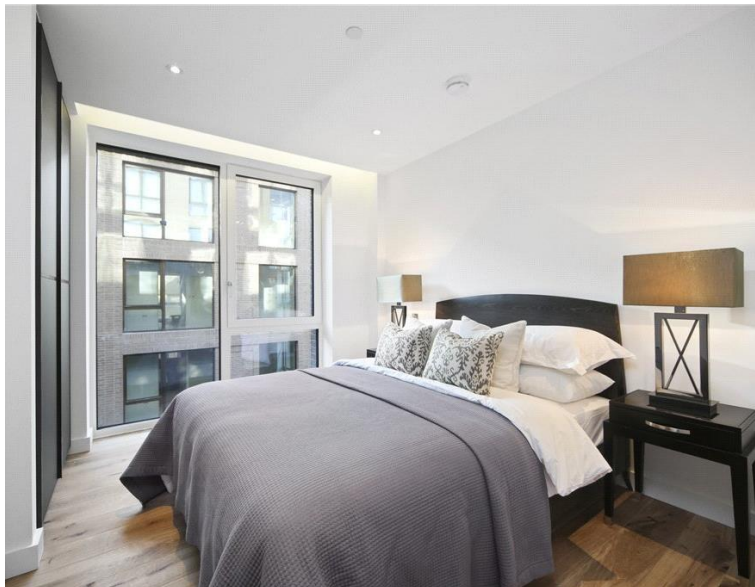


Elizabeth Court, London SW1P

£780,000 Leasehold







Description

Set on the 3rd floor, and offering a bright Southerly aspect from each principal room, the apartment extends to an impressive 619 sq ft of well-proportioned living space and has floor to ceiling windows in both the reception room and bedroom.

The apartment offers a good-sized open plan style reception room, with an alcove available for the perfect 'work from home space' away from the main reception area. The bedroom offers built-in wardrobe space, with a bathroom suite, and excellent storage space / cupboards offered off a welcoming Hallway.

Rosamond House forms part of the popular Westminster Quarter scheme, with modern facilities including residents' courtyard and landscaped roof gardens offering fantastic skyline views, 24 hour concierge service and use of a gymnasium.

Leasehold 988 years (exp. 19/11/3014)

Ground Rent: Approx. £X pa

Service Charge: Approx. £X pa

Council Tax Band: E

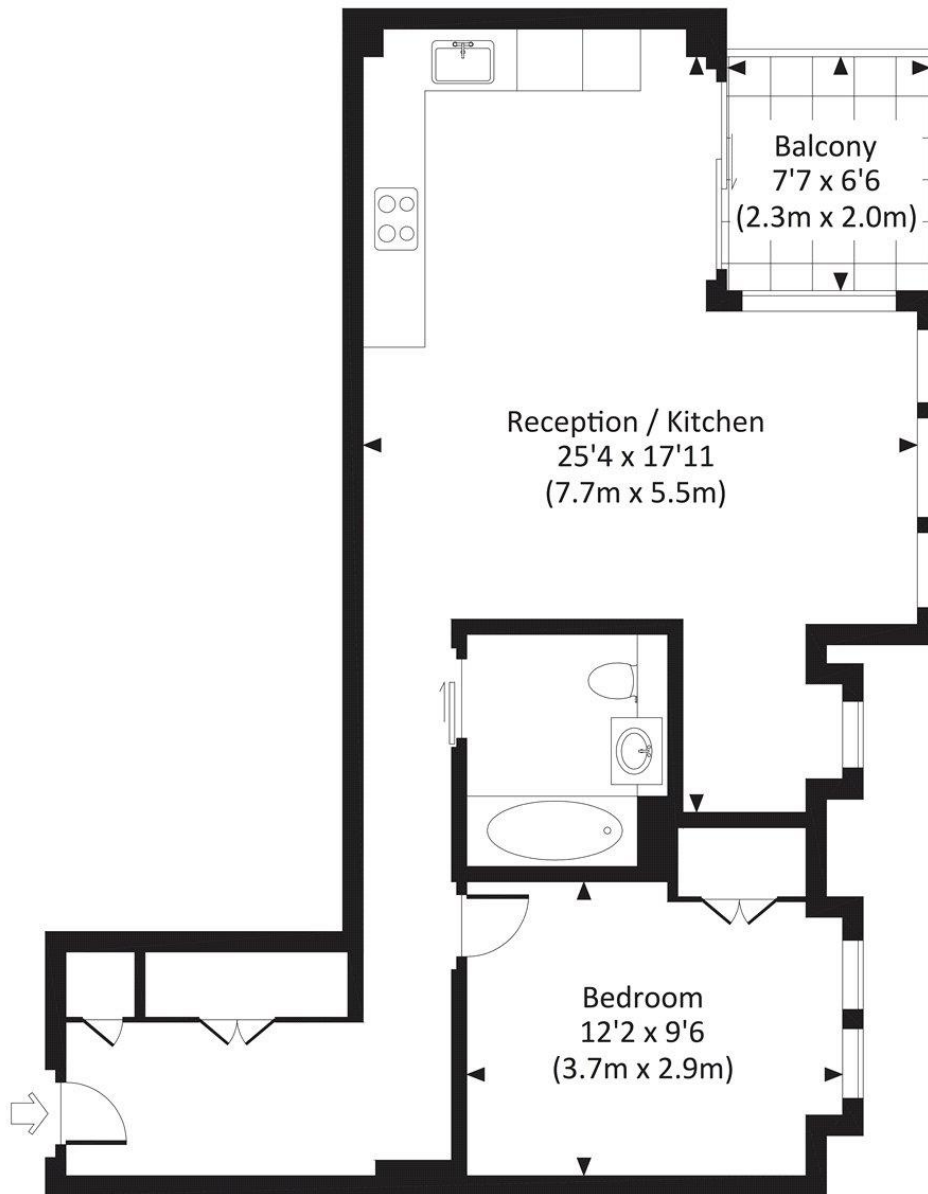
EPC Rating: B

- 1 Double bedroom
- 1 Bathroom
- Open-plan kitchen/reception
- Private balcony
- Communal roof gardens
- 24 Hour concierge
- Use of leisure facilities
- Approx. 619 sq ft / 57 sq m

Floorplan

619 sq ft | 58 sq m

Approx. gross internal area
619 Sq.Ft. / 57.5 Sq.M.



THIRD FLOOR



All measurements have been made in accordance with RICS Code of Measuring Practice which are approximate only and only for illustrative purposes. For the avoidance of doubt, Dowling Jones Design shall not be liable for any reliance on these measurements. © 2017 www.dowlingjones.com 020 7610 9933

Chelsea
2 Cale Street,
London SW3 3QU
+4420 7399 5010
saleschelsea@jll.com

Urban living, your way.

jll.co.uk/residential

© 2019 Jones Lang LaSalle IP, Inc. All rights reserved. All information contained herein is from sources deemed reliable; however, no representation or warranty is made to the accuracy thereof.

