



PROPERTY EXPERTS  
SINCE 1989



## BALCORNE STREET, E9

£900,000

A two double bedroom end of terrace Georgian house with a large garden located on a quiet no through road just steps from the vibrant Well Street.

- Georgian End of Terrace
- Two Double Bedrooms
- Chain Free
- Catchment Area for Schools
- Victoria Park Village
- London Fields



## ABOUT THE HOME

Upon entering the property there is a large open plan reception room, the rear of the property sits the kitchen which leads out onto the sizeable garden and, upstairs, there are two double bedrooms which are accompanied by a family bathroom.

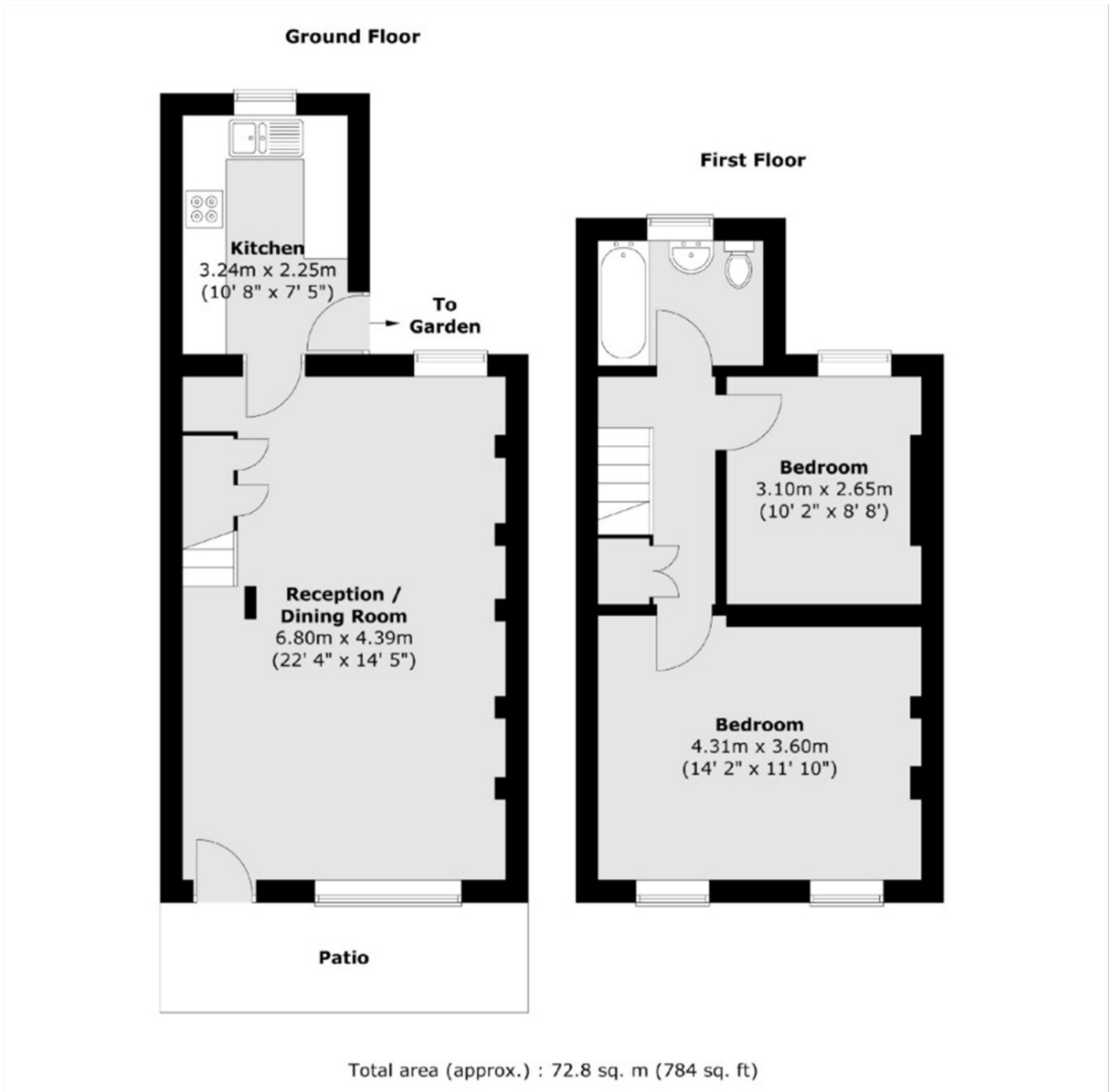
The property maintains period features throughout, including sash windows at the front and wooden flooring downstairs.

Situated in the catchment area for several schools including Orchard and Lauriston Primary Schools.

Located between London Fields and Victoria Park, Balcombe Street benefits from the independent shops, restaurants and cafe that both areas have to offer, as well as green spaces such as Victoria Park itself and transport options from both Homerton and London Fields overground stations.







**SOVEREIGN HOUSE**

213 Victoria Park Road,  
London, E9 7HD  
020 8985 5800

Energy Rating: E We aim to make our particulars both accurate and reliable. However they are not guaranteed; nor do they form part of an offer or contract. If you require clarification on any points then please contact us, especially if you're traveling some distance to view. Please note that appliances and heating systems have not been tested and therefore no warranties can be given as to their good working order.