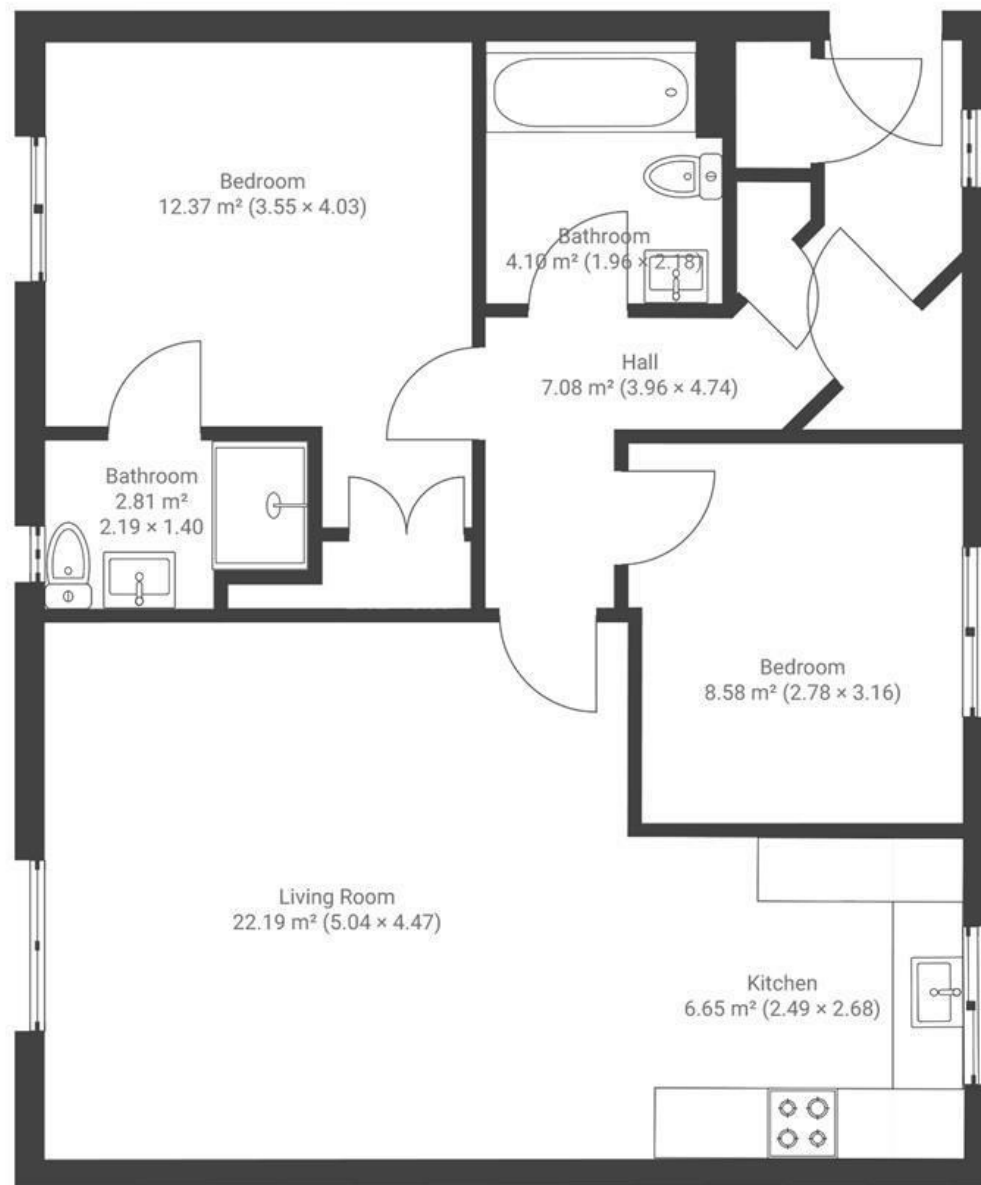


Mustoe Road FRENCHAY

APPROXIMATE FLOOR AREA
71 SQM / 764 SQFT



GROUND FLOOR



Boardwalk

Mustoe Road

FRENCHAY, BRISTOL



£260,000



2 Bedrooms



BS16 2FZ



2 Bathrooms

"When I lived in the property, the surrounding areas were amazing for a nice walk or run. Snuff Mills, Frome Valley & Frenchay Common are incredible to have on your doorstep. Access to the centre was also really easy, and I enjoyed walking to Fishponds High Street on the weekends."

