

# Frank Harris & Co.



## City of London, EC1A

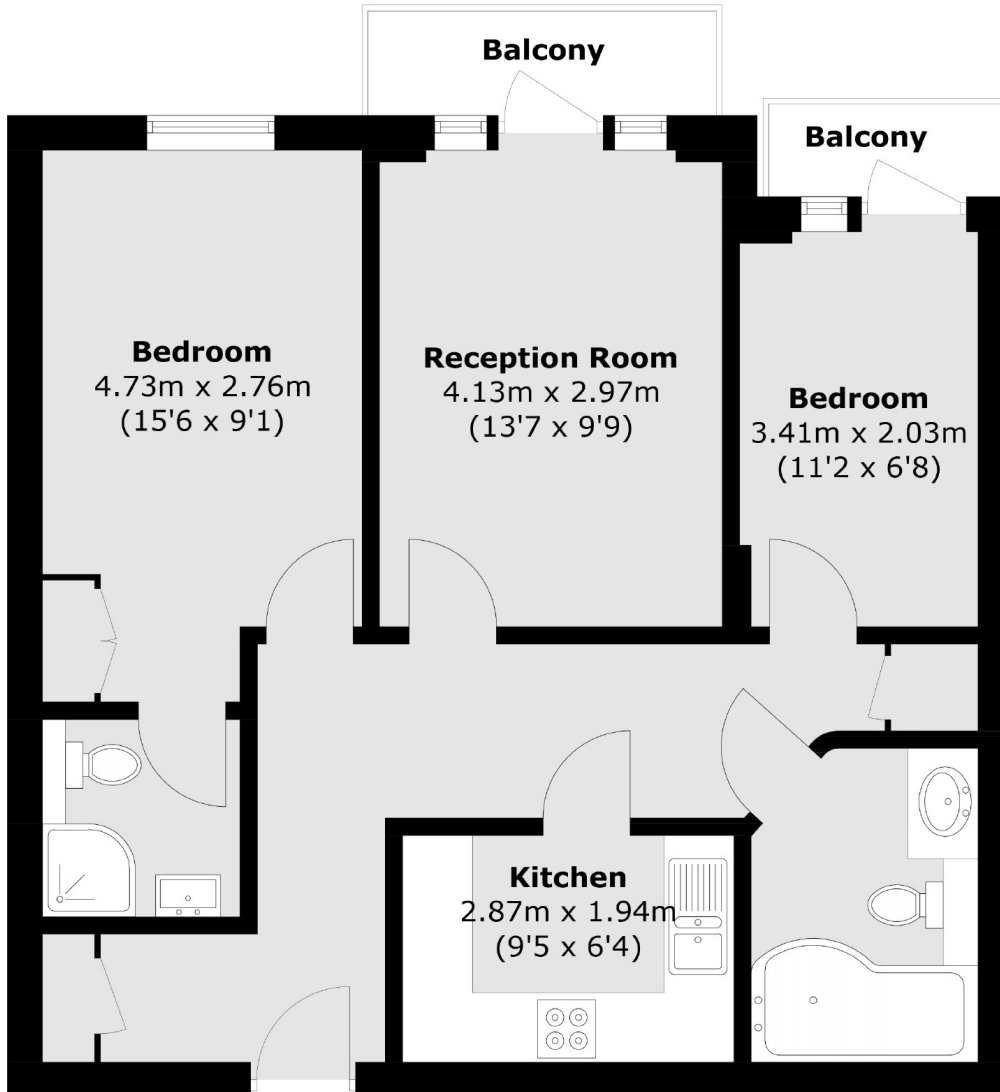
£750 pcm

This property is a smartly presented, two bedroom apartment in a modern development in the midst of the City of London. The property offers a modernised kitchen, a large living room, two balconies and two bathrooms. It can be furnished or unfurnished.

London House is located opposite the Barbican Estate and next to the Museum of London, close to transport at both Barbican and St Paul's stations.

- Two Bedrooms • Two Bathrooms • Wood Floors •
- Two Balconies • Concierge • •

# Frank Harris & Co.



## 7th Floor

Total area (approx.): 62.0 sq. m (667.4 sq. ft)  
Balcony area (approx.): 4.3 sq. m (46.3 sq. ft)

Frank Harris & Co. Barbican and City  
87 Long Lane, London, EC1A  
9ET  
020 7601 1919  
citylettings@frankharris.co.uk

Energy Rating: C. We aim to make our particulars both accurate and reliable. However they are not guaranteed; nor do they form part of an offer or contract. If you require clarification on any points then please contact us, especially if you're traveling some distance to view. Please note that appliances and heating systems have not been tested and therefore no warranties can be given as to their good working order.

