



1 Collingham Road | London | SW5 0NT

£4,830 Per month

ESON2
REAL ESTATE

Key features

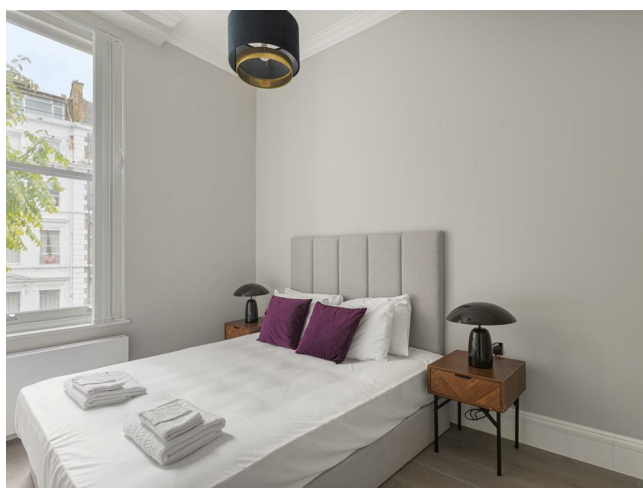
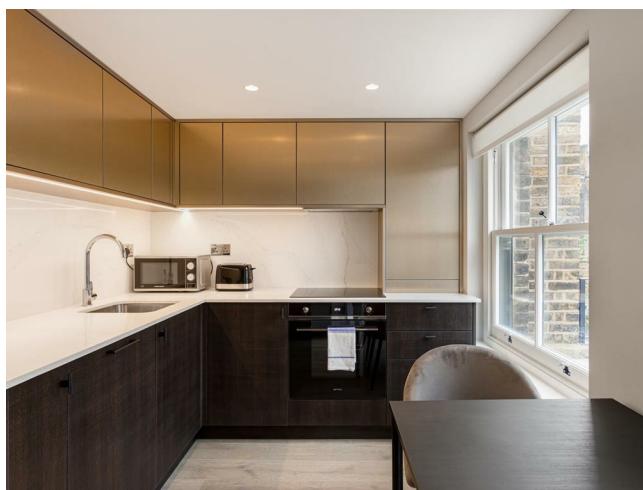
- Prime location
- Lift access
- 2 spacious bedrooms
- Modern kitchen appliances
- High ceilings throughout
- Bright and airy layout
- Private terrace

Description

A beautifully refurbished two-bedroom flat on the prestigious Collingham Road, offering bright, light-filled interiors with high ceilings and stylish modern furnishings. The property features a fully fitted kitchen with brand-new appliances, generous storage, and resident parking, providing both comfort and convenience in a sought-after central London location.

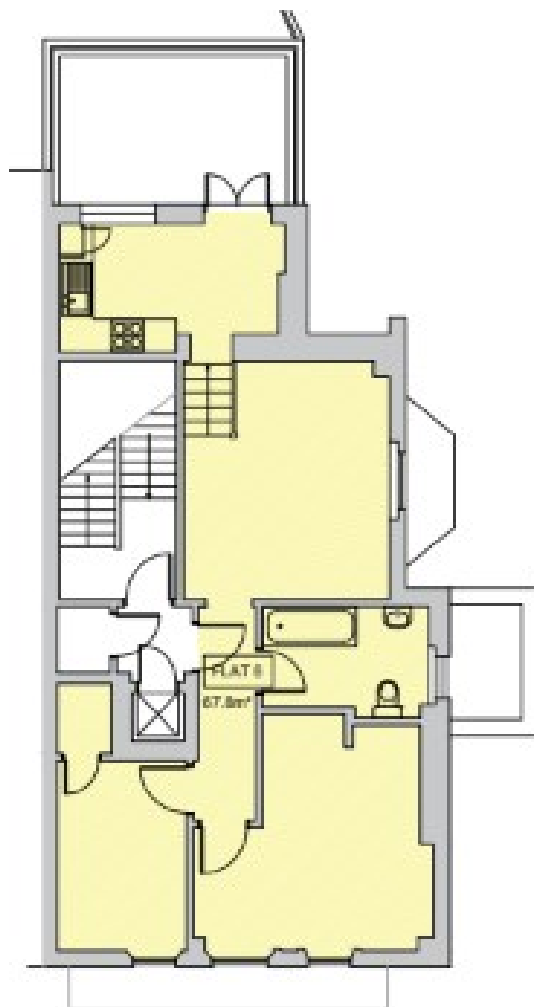
Moments from Gloucester Road Underground Station, the flat benefits from excellent transport links, with easy access to South Kensington's boutiques, restaurants, parks, and cultural attractions. Ideal for professionals or couples seeking refined city living in one of London's most desirable neighbourhoods.

Directions



Step into refined city living with this beautifully refurbished two-bedroom flat on the prestigious Collingham Road, South Kensington. Set in one of London's most desirable neighbourhoods, the property offers immediate access to boutique shopping, fine dining, leafy parks, and world-class cultural attractions.

Floor plans



Energy Efficiency Rating		
	Current	Potential
<i>Very energy efficient - lower running costs</i>		
(92 plus) A		
(81-91) B		
(69-80) C		
(55-68) D	64	75
(39-54) E		
(21-38) F		
(1-20) G		
<i>Not energy efficient - higher running costs</i>		
England & Wales	EU Directive 2002/91/EC	

Council Tax Band F EPC Rating D



301 Michelin House 81 Fulham road
London
Greater London
SW3 6RD
07920 257649
fayeel@eson2.co.uk
www.eson2.co.uk