



18 Meadow View

Sayers Common, BN6 9GB

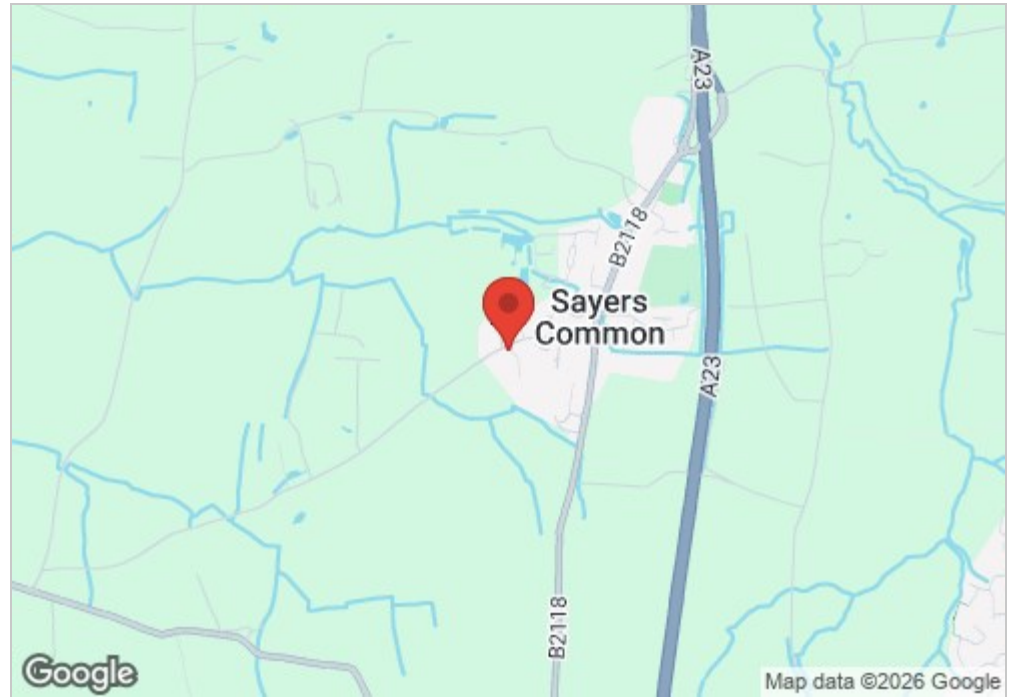
Guide price £475,000

Nestled in the picturesque countryside of Sayers Common, this light and spacious house offers modern living and natural beauty. Built in 2007, the property spans an impressive 1,000 square feet, including an exceptional large south-facing garden and garage, providing ample space for comfortable family living.

Upon entering, an entrance hall takes you through to a cosy snug, a convenient washroom, and an open-plan kitchen with glorious 180° South-West views, serving as the heart of the home. Upstairs, the house boasts three generously sized bedrooms, with two bathrooms and a large landing, thoughtfully designed to cater to the needs of a busy household.

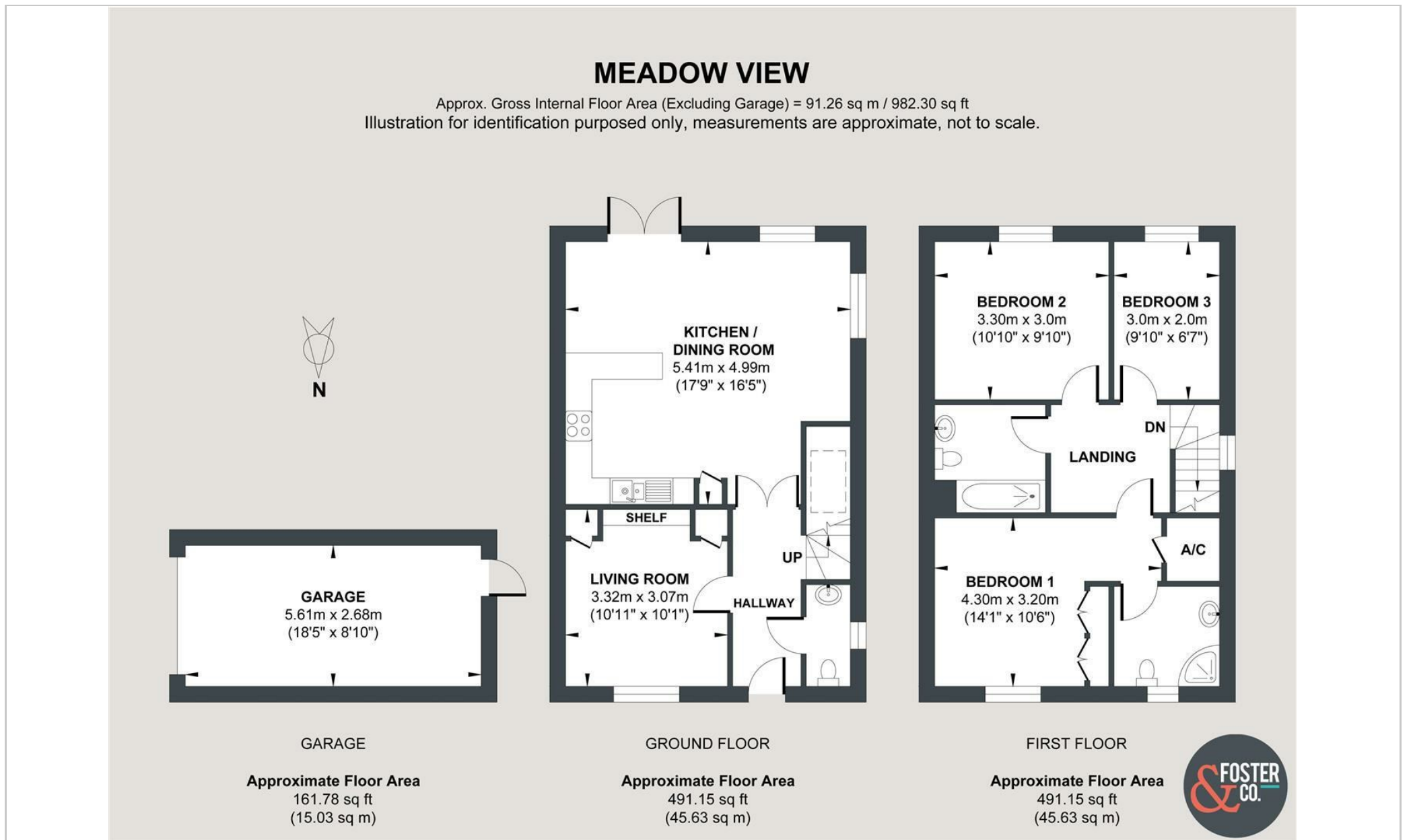
One of the standout features of this property is the great-sized, established garden, offering a wonderful outdoor space, complete with a large shed (with power), greenhouse, patio and seating area ideal for families, and gardening or outdoor enthusiasts.

This beautifully presented property is perfect for those seeking a peaceful lifestyle in a convenient location near local amenities such as a popular village Community Shop, as well as being accessible to Gatwick, Brighton and London.



- End of chain
- Garage
- Open plan living
- Great size garden
- Countryside setting
- Snug room

Energy Efficiency Rating		
	Current	Potential
Very energy efficient - lower running costs		
(92 plus) A		
(81-91) B		
(69-80) C		
(55-68) D		
(39-54) E		
(21-38) F		
(1-20) G		
Not energy efficient - higher running costs		
	78	84
England & Wales	EU Directive 2002/91/EC	



Foster & Co and their clients give notice that:
These sales particulars do not constitute any part of an offer of contract and are for guidance for prospective purchases only and should be not relied upon as a statement of fact.
We are not to be held responsible for material information that has not been given to us by our client at the time of marketing.
All measurements are approximate

