



Guide Price
£600,000
Freehold

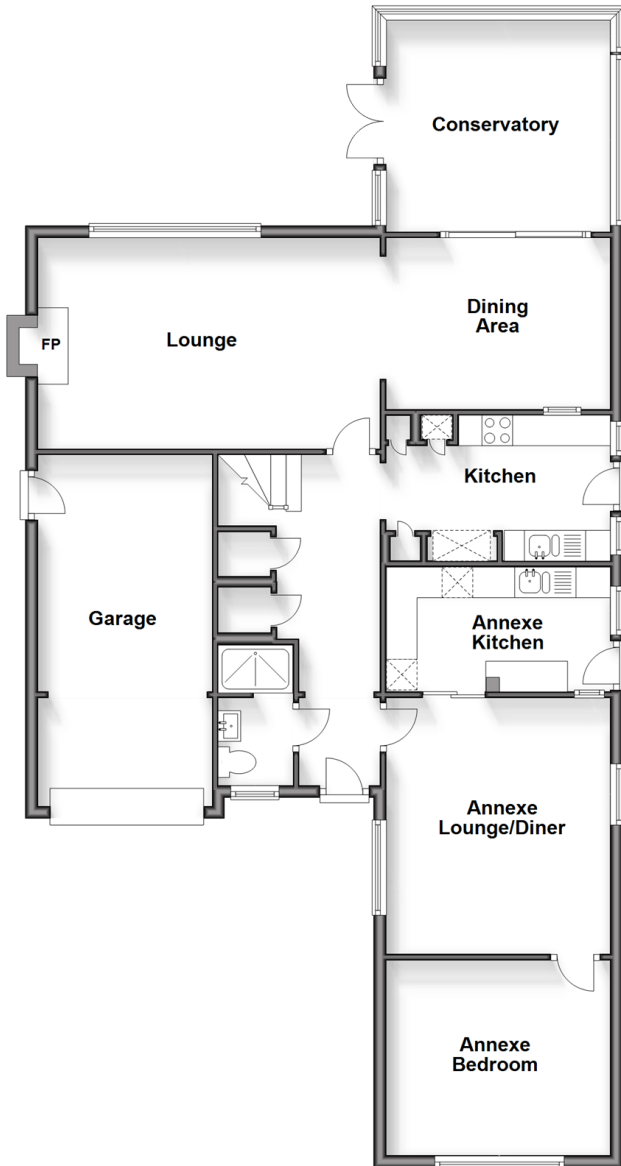
5x  3x  3x 

Robin Hood Lane, Walderslade, Chatham,
Kent, ME5

Wards
Helping you move forwards

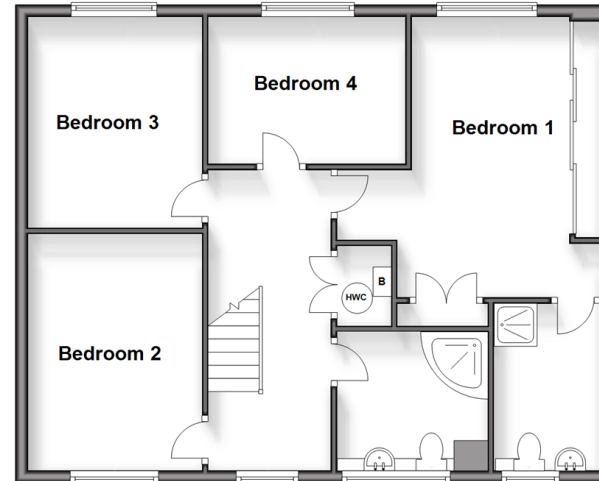
Ground Floor

Approx. 119.8 sq. metres (1289.9 sq. feet)



First Floor

Approx. 69.4 sq. metres (747.1 sq. feet)



Accommodation

GROUND FLOOR

Entrance Hall

ANNEXE AREA

Lounge/Diner: 13'7 x 11'7 (4.14m x 3.53m)

Kitchen 2 : 11'8 x 6'3 (3.56m x 1.91m)

Bedroom 5 : 11'7 x 10'3 (3.53m x 3.13m)

Shower Room

MAIN AREA

Kitchen : 11'8 x 7'8 (3.56m x 2.34m)

Lounge : 19'0 x 11'6 (5.80m x 3.51m)

Dining Area : 11'6 x 9'1 (3.51m x 2.77m)

Conservatory : 11'4 x 10'8 (3.46m x 3.25m)

FIRST FLOOR

Landing

Bedroom 1 : 15'0 x 11'8 (4.58m x 3.56m)

En Suite Shower Room

Bedroom 2 : 11'7 x 9'6 (3.53m x 2.90m)

Bedroom 3 : 12'0 x 8'8 (3.66m x 2.64m)

Bedroom 4 : 11'4 x 8'7 (3.46m x 2.62m)

Family Bathroom

OUTSIDE

Driveway

Garage

Front Garden

Rear Garden

Workshop/Outbuilding



Main features

- Spacious detached property on a generous plot
- Good sized main bedroom with en suite shower room
- Internal Annexe space which is great for the growing family
- Ample parking for 5-6 cars
- Central location within walking distance of local amenities



Nearest Schools

Primary Schools: Tunbury Primary 0.3 miles, Horsted Junior School 0.9 miles, Maundene School 1.0 miles

Secondary Schools: Walderslade Girls' School 2.2 miles, Greenacre School 2.3 miles, Bradfields School 2.4 miles



Transport Information

Train Stations: Gillingham 3.5 miles, Halling 3.6 miles, Aylesford 3.6 miles



Address

Robin Hood Lane, Walderslade, Chatham, Kent, ME5



Directions

For directions to this property please contact us.



Wards
Helping you move forwards

Call Walderslade Branch 01634 865661 ■ wardsofkent.co.uk



■ Legal advice should be taken to verify fixtures/fittings, planning, alterations and/or lease details ■ Appliances & services are untested, dimensions are approximate and floor plans are not to scale



12144211/20260211/ML/ALH