



## WIMBLEDON HILL ROAD, SW19

£3,250 per month

Three double bedrooms  
Separate reception room  
One bathroom  
Private balcony  
Wooden flooring throughout  
Energy rating: c

@marshandparsons  
marshandparsons.co.uk

MARSH &  
PARSONS



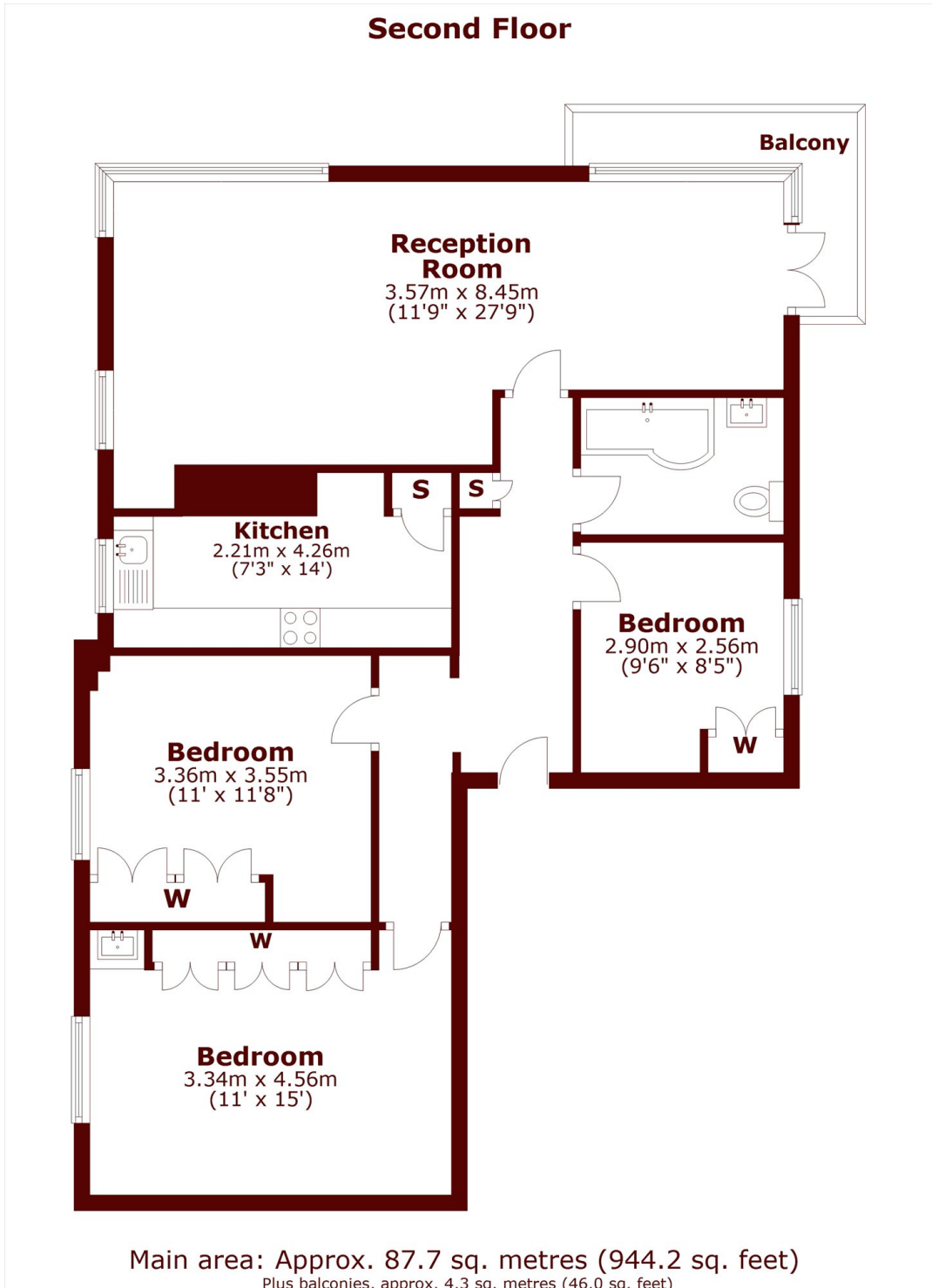
# ABOUT THE PROPERTY

A modern apartment offering three bedrooms, wooden flooring throughout, a new bathroom and kitchen, a spacious living room and a private balcony. Hot water and heating included.

Hill Court is a popular development on Wimbledon Hill Road. Perfectly positioned between the Village and all of the surrounding amenities and Wimbledon town centre.



# STEP INSIDE WIMBLEDON HILL ROAD



Wimbledon  
020 8879 6661

Energy Rating: C We aim to make our particulars both accurate and reliable. However, they are not guaranteed; nor do they form part of an offer or contract. If you require clarification on any points then please contact us, especially if you're traveling some distance to view. Please note that appliances and heating systems have not been tested and therefore no warranties can be given as to their good working order

**MARSH &  
PARSONS**