



## St. Thomas's Gardens, NW5

£675,000

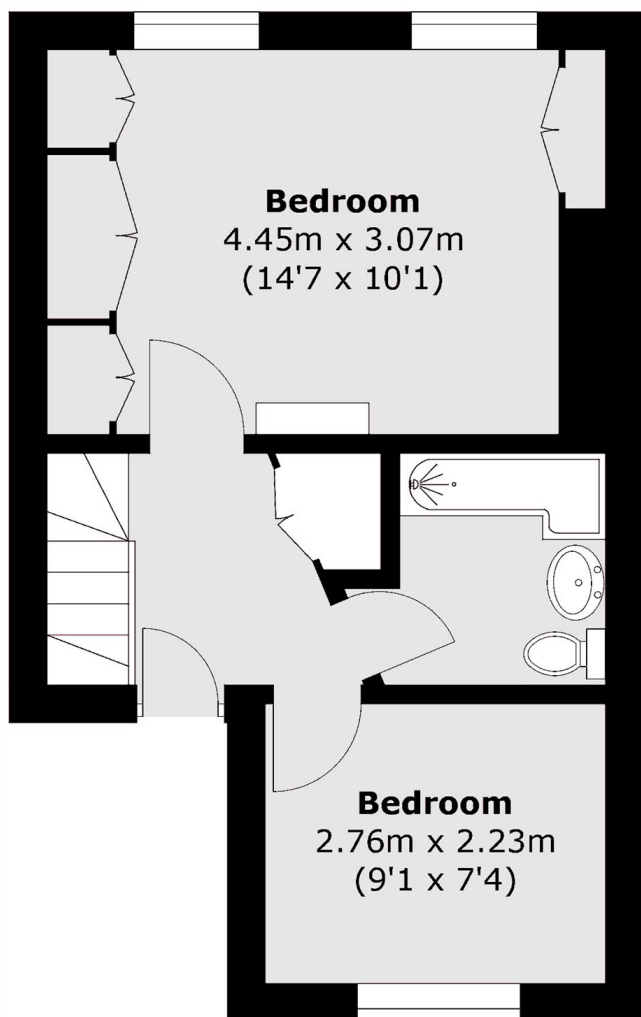
This fantastic two bedroom split-level apartment is in great condition throughout. The property has a private south facing roof terrace, and comes with a share of the freehold.

St Thomas's Gardens is ideally situated close to all the amenities of Belsize Park and Kentish Town, and is also within easy reach of local transport links, including Chalk Farm underground station (Northern line).

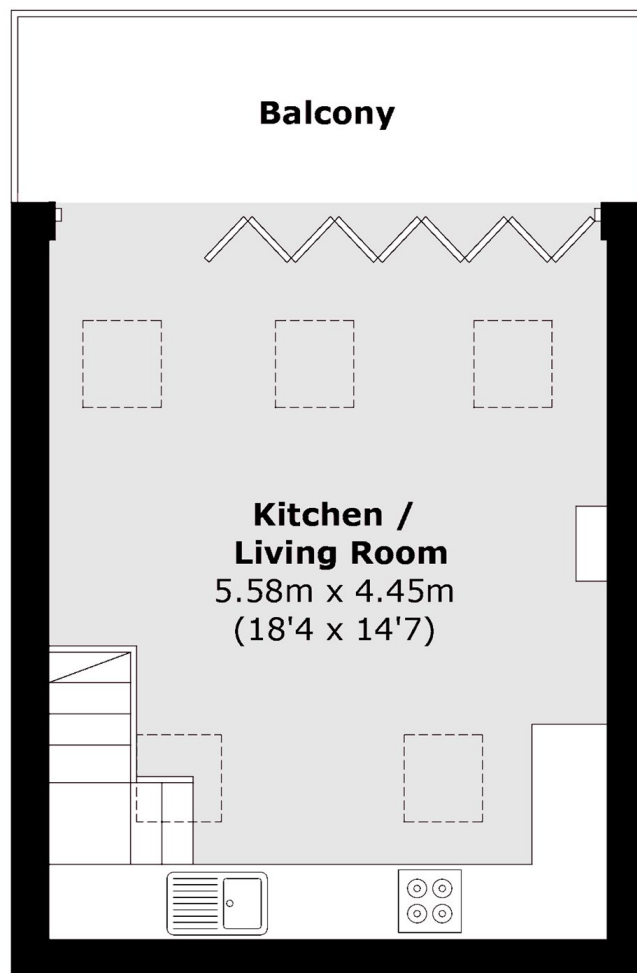
### Features

- Two Bedrooms
- Split-Level
- Share of Freehold
- Private Roof Terrace
- Private Entrance
- Great Location

# St. Thomas's Gardens, London, NW5



**First Floor**



**Second Floor**

Total area (approx.): 54.6 sq. m (587.6 sq. ft)  
Balcony : 7.3 sq. m (78.5 sq. ft)