

Reminder Lane, London SE10

Offers In Excess Of £500,000 Leasehold







Description

Fancy living on the River Thames? This stunning direct river facing two-bedroom apartment offers approximately 766 square feet of contemporary living space on the third floor.

The open-plan kitchen and reception room features warm wood flooring, floor-to-ceiling windows, and a sleek modern kitchen with integrated appliances, creating an inviting space filled with natural light. Both generously proportioned bedrooms provide comfortable accommodation, complemented by a stylish bathroom with contemporary fixtures. The apartment's standout feature is the private balcony, accessible from the main living area, offering spectacular panoramic views of the Thames, the Emirates Air Line cable car, and the London skyline. Additional practical storage space enhances the functionality of this exceptional riverside residence, combining urban convenience with tranquil waterfront living.

Residents benefit from a 24-hour concierge service, with North Greenwich station (Jubilee Line) and the O2 Arena both within half a mile, providing excellent connectivity and entertainment options.

- Direct river facing apartment
- 2 Double bedrooms
- 1 Bathroom
- Private balcony
- 24 Hr concierge
- North Greenwich station within half a mile
- Approx. 766 sq ft / 71.2 sq m
- EPC: B

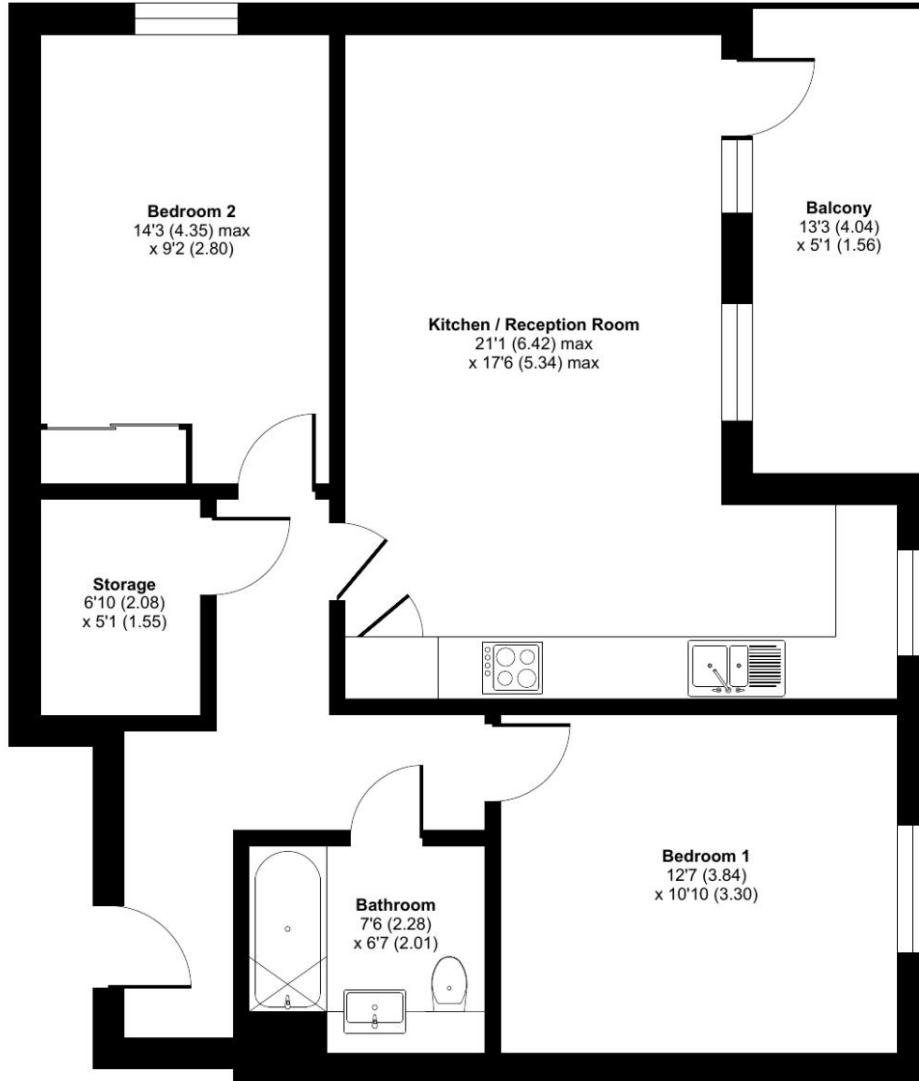
Floorplan

766 sq ft | 71 sq m

Reminder Lane, London, SE10

Approximate Area = 766 sq ft / 71.2 sq m

For identification only - Not to scale



THIRD FLOOR



Floor plan produced in accordance with RICS Property Measurement 2nd Edition, Incorporating International Property Measurement Standards (IPMS2 Residential). © n̄che.com 2026. Produced for L&Q Group. REF: 1418625

Greenwich
22 College Approach,
London SE10 9HY
02088589986
lettingsgreenwich@eu.jll.com

Urban living, your way.

jll.co.uk/residential

© 2019 Jones Lang LaSalle IP, Inc. All rights reserved. All information contained herein is from sources deemed reliable; however, no representation or warranty is made to the accuracy thereof.

