



Burwood Place, W2

£5,000 Per week

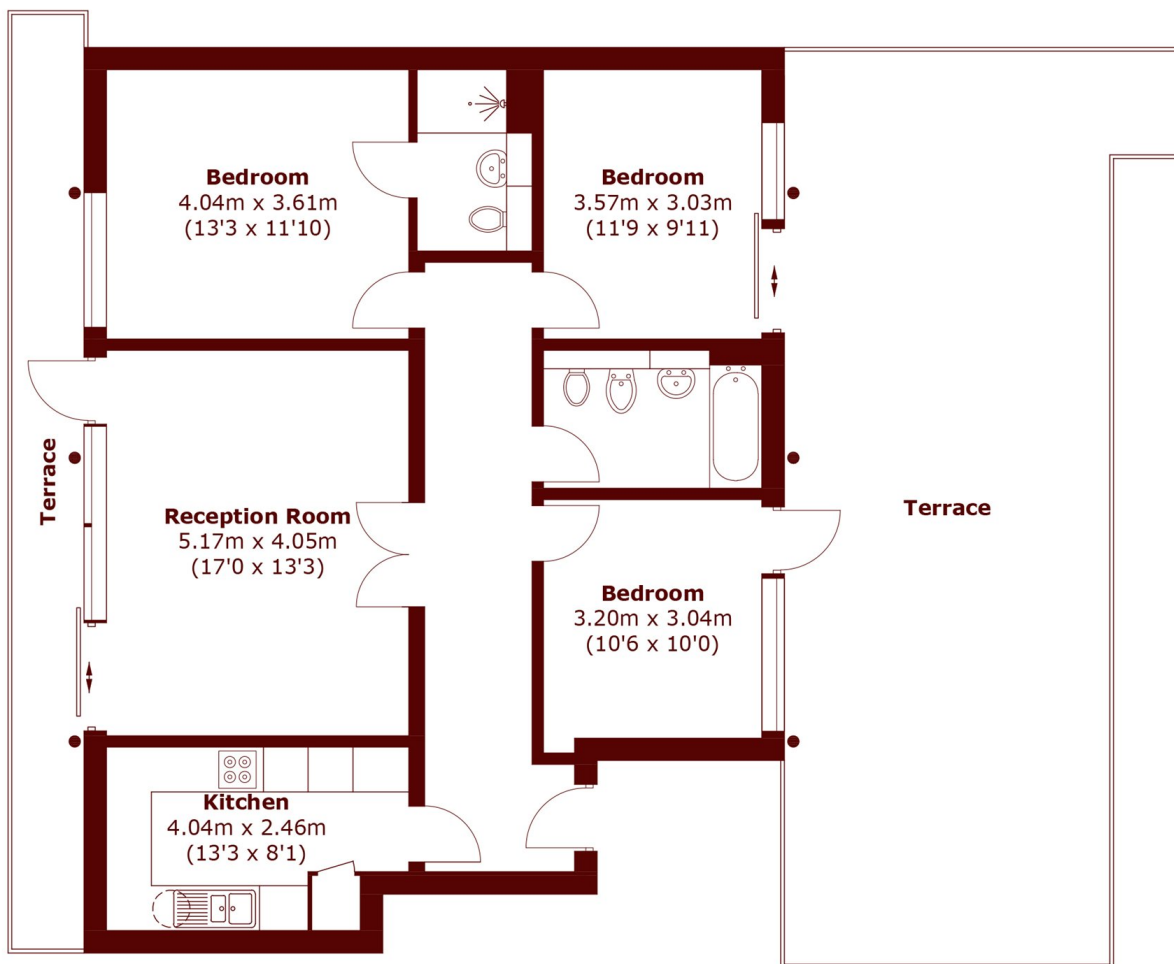
This large three bedroom apartment is perfectly located in the Hyde Park Estate. It benefits from having a large terrace and porter. The property can come either furnished or unfurnished and has two bathrooms.

Located with access to multiple different transport links and moments from the heart of Marylebone. A great selection of bars, restaurants and pubs.

Features

Three Bedrooms
Two Bathrooms
Air Conditioning
Large Terrace
Porter

Burwood Place, London, W2



Second Floor

Total area (approx.): 93.4 sq. m (1,005.3 sq. ft)
Terrace (approx.): 67.2 sq. m (723.3 sq. ft)