

# Frank Harris & Co.



**Ormonde Mansions, WC1B**

**£1,100,000**

Introducing this elegant three-bedroom apartment, positioned on the second floor of a charming red-brick mansion block. The property features a spacious west-facing reception room filled with natural light, a separate dining room, and a well-appointed kitchen leading onto a private balcony.



Ormonde Mansions is located close to Russell Square Gardens and Queen Square Gardens. Both Russell Square and Holborn stations are a short walk away. Local amenities such as; bars, cafés, restaurants, and tourist attractions can be found nearby on Southampton Row and Great Russell Street.

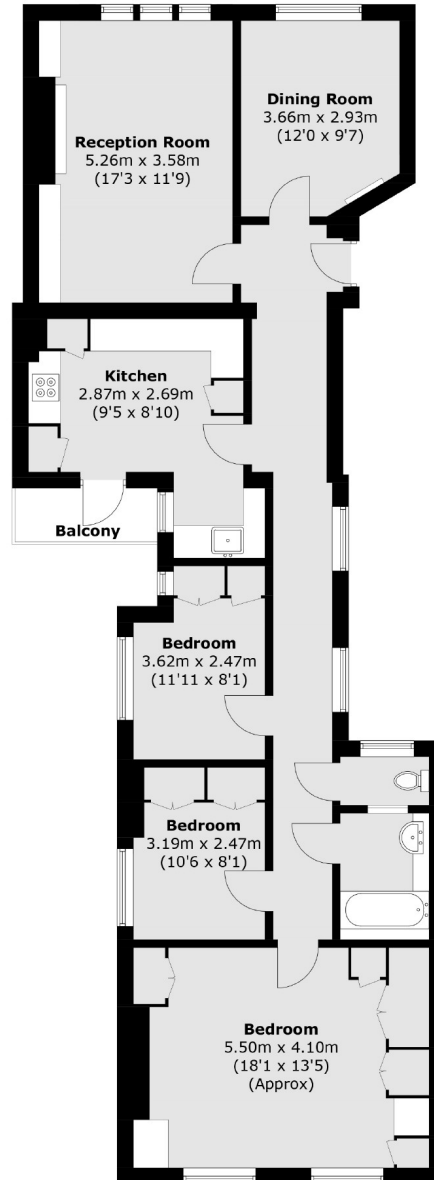
- Second Floor • Excellent Lateral Space • Mansion Block •
- Private Balcony • Superb Transport Link • High Ceilings •







# Frank Harris & Co.



Total area (approx.): 110.0 sq. m (1,184.0 sq. ft)  
Balcony area: 2.6 sq. m (27.9 sq. ft)

Frank Harris & Co. Bloomsbury and Kings Cross  
81 Marchmont Street,  
London, WC1N 1AL  
020 7405 4444  
bloomsburysales@frankharris.co.uk

Energy Rating: D. We aim to make our particulars both accurate and reliable. However they are not guaranteed; nor do they form part of an offer or contract. If you require clarification on any points then please contact us, especially if you're traveling some distance to view. Please note that appliances and heating systems have not been tested and therefore no warranties can be given as to their good working order.

