



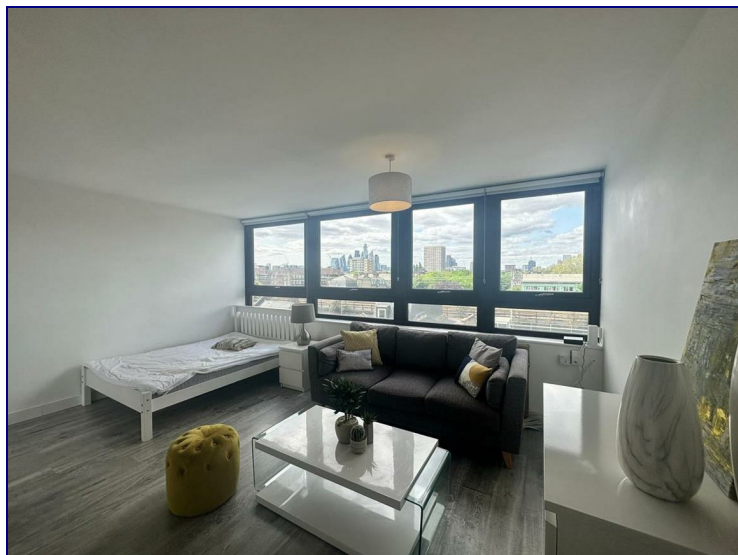
[www.kings-group.net](http://www.kings-group.net)

488 Bethnal Green Road

London E2 0EA

Tel: 0207 613 2121

**Cambridge Heath Road, London, E2 9LJ**



**£1,600 Per Month**

Kings are delighted to be able to offer to the market For Let this Studio apartment with a separate sleeping area situated on the fourth floor.

Mayfield House is located in the heart of Bethnal Green within walking distance to Bethnal Green Underground & Overground station but also with multiple bus routes in to the City, West End and beyond and additionally the Glorious Victoria Park is within a short walk and offers Beautiful Open Spaces and Miles of Scenic Walks. The Relaxed, Cool Feel of Victoria Park Farmers Market will make for wonderful lazy Sunday morning strolls. This property really is set within the Heart of the East End with easy access to all of the Restaurants, Bars, Shops, Markets, Gyms, Parks, Galleries and Museums this Exciting Area has on offer.

Internally the property offers a very spacious reception room with a separate sleeping area, Separate Kitchen and bathroom.

An early internal inspection is highly recommended in order to avoid disappointment.



Energy Efficiency Rating		
	Current	Potential
Very energy efficient - lower running costs		
(92 plus) <b>A</b>		
(81-91) <b>B</b>		
(69-80) <b>C</b>		
(55-68) <b>D</b>		
(39-54) <b>E</b>		
(21-38) <b>F</b>		
(1-20) <b>G</b>		
Not energy efficient - higher running costs		
<b>England &amp; Wales</b>	EU Directive 2002/91/EC	

Environmental Impact (CO <sub>2</sub> ) Rating		
	Current	Potential
Very environmentally friendly - lower CO <sub>2</sub> emissions		
(92 plus) <b>A</b>		
(81-91) <b>B</b>		
(69-80) <b>C</b>		
(55-68) <b>D</b>		
(39-54) <b>E</b>		
(21-38) <b>F</b>		
(1-20) <b>G</b>		
Not environmentally friendly - higher CO <sub>2</sub> emissions		
<b>England &amp; Wales</b>	EU Directive 2002/91/EC	

