



15 Wellis Court Wellis Gardens

, St Leonards-on-sea, TN38 0UX

Asking Price £245,000



15 Wellis Court Wellis Gardens



Description

A well-presented bright and airy second-floor flat situated in Wellis Court, Wellis Gardens, St Leonards-on-Sea. This wonderfully laid out home benefits from a desirable south-east facing balcony, perfect for enjoying morning sunshine and open views. A variety of on street parking is on offer at the property, along with an area of off-road parking.

The property features a spacious dual-aspect living room, allowing for an abundance of natural light throughout the day and creating a welcoming, versatile living space. The modern kitchen is stylish and functional, complemented by a contemporary bathroom finished to a high standard.

Practicality is a key feature of this flat, offering four separate storage cupboards located throughout the property, providing excellent space for organisation and everyday living.

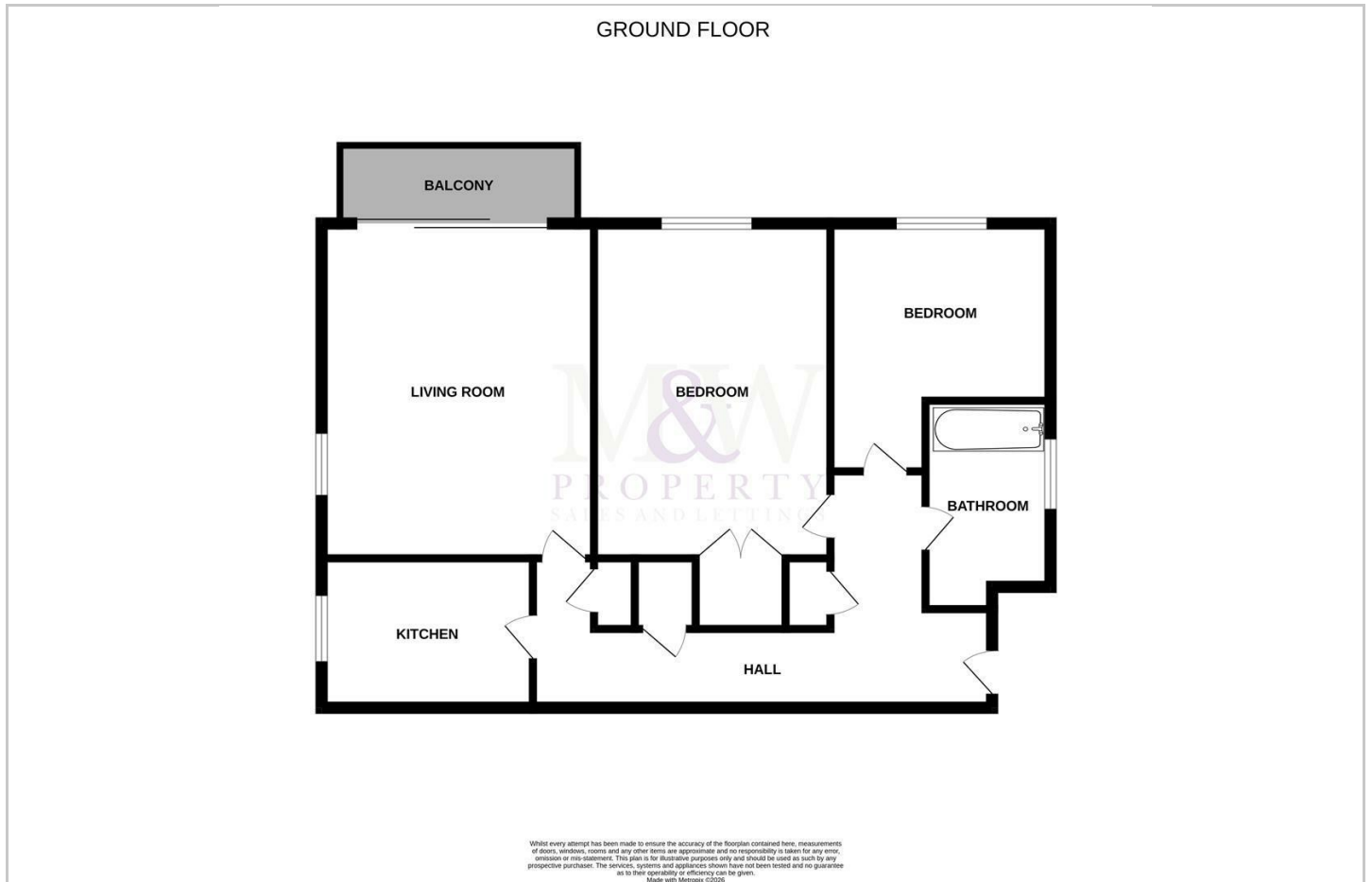
Ideal for first-time buyers, down sizers, or investors, this attractive flat combines comfort, light, and convenience in a popular residential location.

- Two Double Bedroom Apartment
- Off-Road Parking & Garage
- Dual Aspect Living Room
- Private Garage en-bloc
- South East Facing Balcony
- Modern Kitchen and Bathroom
- Four Cupboards Through Flat For Additional Storage

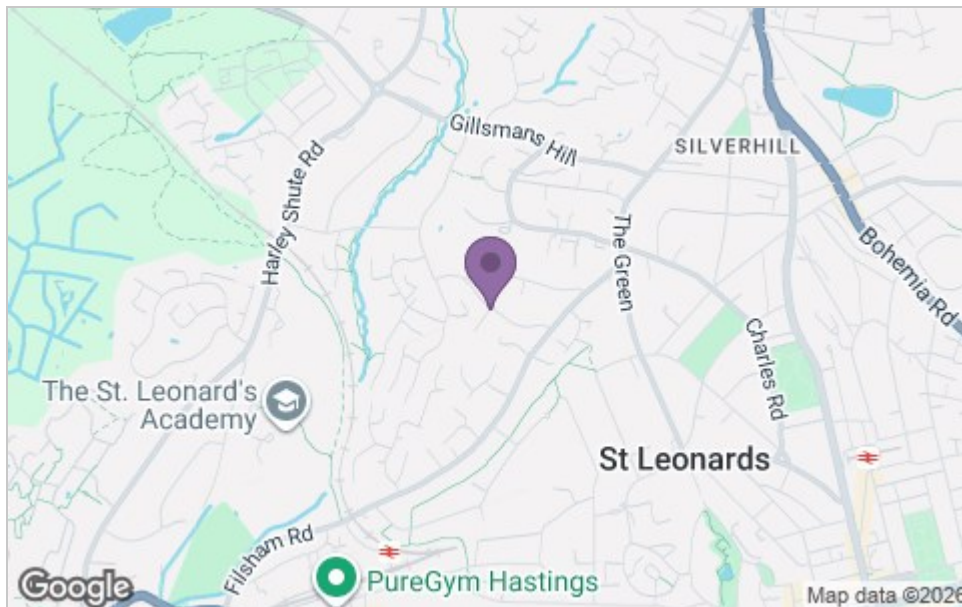




Floor Plan



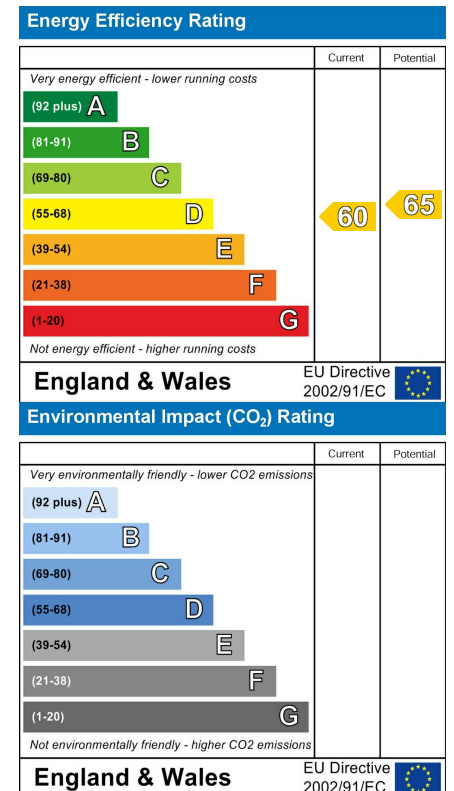
Area Map



Viewing

Please contact our St Leonards on Sea Office on 01424 420073 if you wish to arrange a viewing appointment for this property or require further information.

Energy Efficiency Graph



These particulars, whilst believed to be accurate are set out as a general outline only for guidance and do not constitute any part of an offer or contract. Intending purchasers should not rely on them as statements of representation of fact, but must satisfy themselves by inspection or otherwise as to their accuracy. No person in this firm's employment has the authority to make or give any representation or warranty in respect of the property.