

LEASEHOLD



Apartment

# 1 GRAVESON HOUSE MARKET PLACE, HERTFORD, HERTFORDSHIRE, SG14 1FD

Guide Price

## £205,000

### FEATURES

- Council Tax Band - B
- One Bedroom First Floor Apartment
- Located In The Heart Of Hertford Town Centre
- Vacant & Chain Free
- Situated Within the Iconic Graveson House
- Walking Distance To Either Hertford East or North BR



# Market Place Hertford SG14 1FD

Recently redecorated throughout, the property features an open plan kitchen/living room, a modern bathroom, and well-proportioned double bedroom. Characterful sash windows provide charming views over the Saturday market and cobbled street directly below, bringing a lively Hertford atmosphere right to your doorstep.

Additional benefits include gas central heating, entry phone system, and a long lease. With the choice of two train stations, shops, cafe's, bars and restaurants just moments away, this is an ideal purchase for first time buyers or rental investors seeking a strong town centre opportunity.

Contact Mount & Co. to arrange your viewing.



MOUNT & CO | 2 MARKET PLACE, HERTFORD, HERTFORDSHIRE, SG14 1DF





Call us on

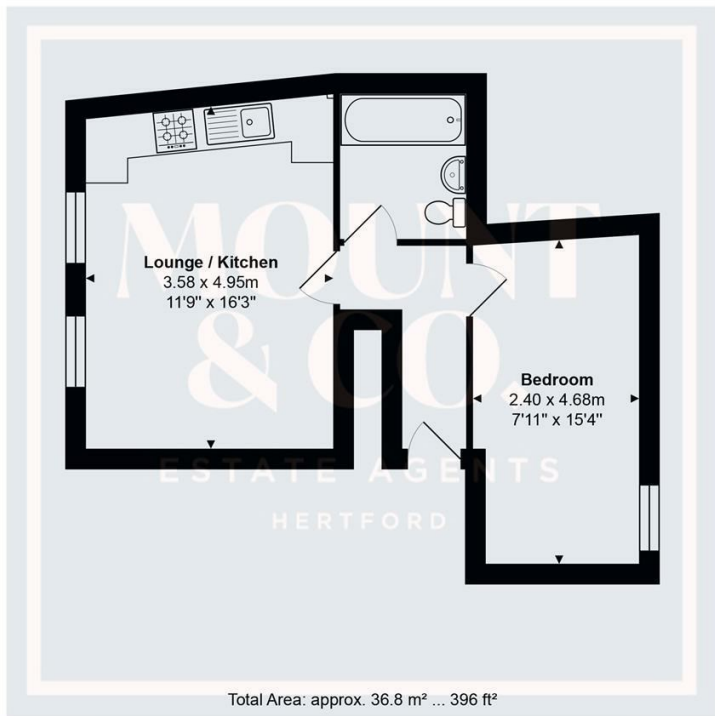
01992 937 011

hello@mountandco.co.uk

https://www.mountandco.co.uk/

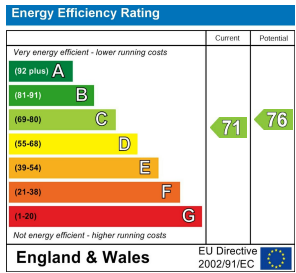
Council Tax Band

B



THE FLOORPLAN IS FOR ILLUSTRATIVE PURPOSES ONLY AND IS NOT TO SCALE.  
Measurements and features are approximate and may differ from the actual property. Verify all details independently; no liability is accepted for errors or omissions.

Property marketing provided by www.fotomarketing.co.uk



Agents Note: Whilst every care has been taken to prepare these particulars, they are for guidance purposes only. All measurements are approximate and are for general guidance purposes only and whilst every care has been taken to ensure their accuracy, they should not be relied upon and potential buyers are advised to recheck the measurements.