



jordan fishwick

SALE
The Courtyard



The Courtyard, Sale, M33 3YS

£1,300 Per Calendar Month



The Property

*** AVAILABLE EARLY JULY *** Roseville Mews, Sale
Jordan Fishwick are pleased to bring to the rental market a two double bedroom modern apartment close to the town centre and local tram station. Communal entrance with intercom, entrance hall, lounge with dining area, modern fitted kitchen with appliances. Bedroom one with en suite, second double bedroom, Family bathroom. Secure and gated allocated parking. Part furnished. Call now to view - 0161 976 5080

Directions

M33 3YS



- APARTMENT
- TWO BEDROOMS
- TWO BATHROOMS
- OFF ROAD PARKING
- CLOSE TO METROLINK
- EPC RATING D
- COUNCIL TAX BAND D
- AVAILABLE EARLY JULY

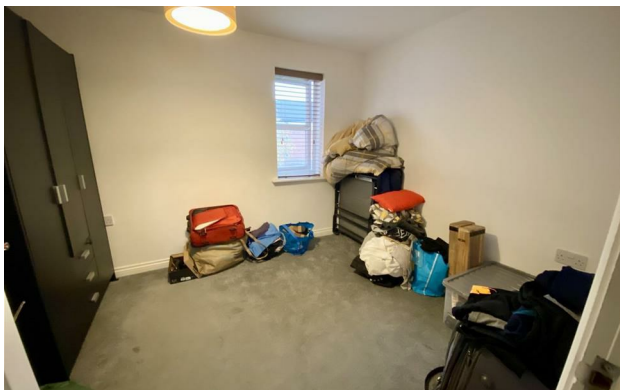
Postcode - M33 3YS

EPC Rating - D

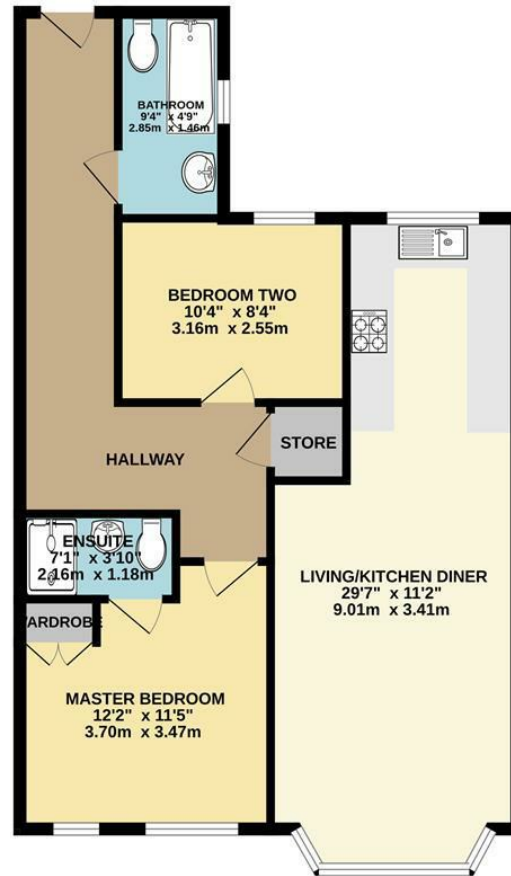
Floor Area - sq ft

Local Authority - Trafford

Council Tax - D



GROUND FLOOR
727 sq.ft. (67.5 sq.m.) approx.



TOTAL FLOOR AREA : 727 sq.ft. (67.5 sq.m.) approx.
Measurements are approximate. Not to scale. Illustrative purposes only.
Made with Metropix ©2023



These particulars are believed to be accurate but they are not guaranteed and do not form a contract. Neither Jordan Fishwick nor the vendor or lessor accept any responsibility in respect of these particulars, which are not intended to be statements or representations of fact and any intending purchaser or lessee must satisfy himself by inspection or otherwise as to the correctness of each of the statements contained in these particulars. Any floorplans on this brochure are for illustrative purposes only and are not necessarily to scale.

Offices at: Chorlton, Didsbury, Disley, Hale, Glossop, Macclesfield, Manchester Deansgate, Manchester Whitworth Street, New Mills, Sale, Wilmslow and Withington

01619291994

halemanagement@jordanfishwick.co.uk

www.jordanfishwick.co.uk