



5, Aylott Court, Watton At Stone  
SG14 3SX  
£365,000



[stevenoates.com](http://stevenoates.com)



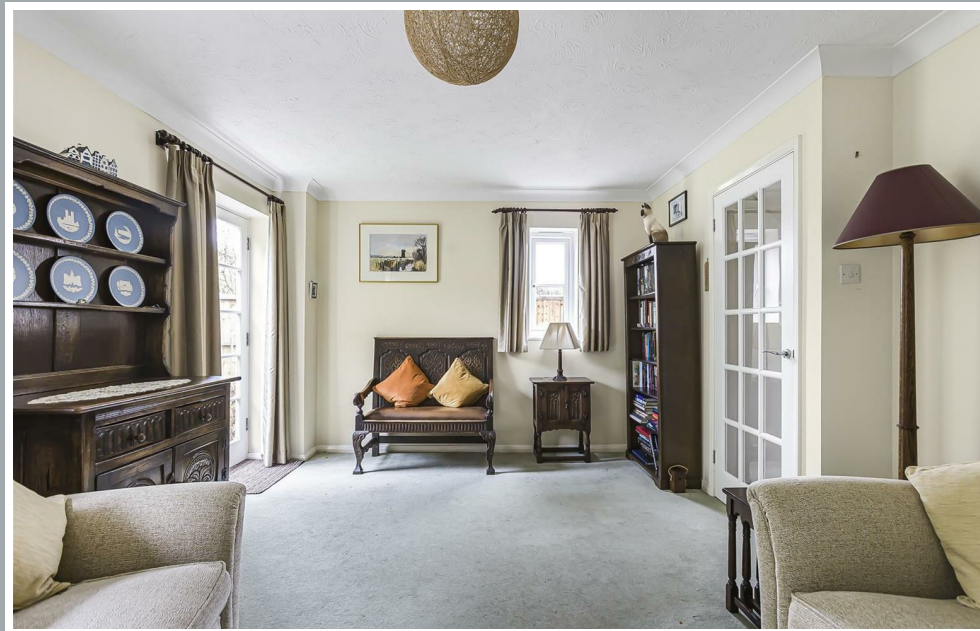
## 5 Aylott Court, High Street, Watton At Stone, Herts, SG14 3SX

Situated in a quiet cul-de-sac location, within the heart of the idyllic village of Watton At Stone, Steven Oates are delighted to offer this two bedroom link terraced house. The property is arranged over two levels and benefits approx ..... sq ft of accommodation. On the ground floor, there is a spacious hallway, kitchen, lounge and ground floor cloakroom. On the first floor, there are two bedrooms and modern shower room. Externally, there is an allocated car parking space with additional visitors parking bays. The rear courtyard garden is secluded and low maintenance. The property has the added incentive of being offered with no onward chain. Internal viewing recommended.

Located within the heart of this vibrant village, Watton At Stone offers excellent amenities including a mainline station which serves London's Moorgate within approximately 50 minutes. Ideally placed for schooling needs with Watton-At-Stone primary school being only minutes away from the house, along with local shop, amenities, and local pubs within close proximity.



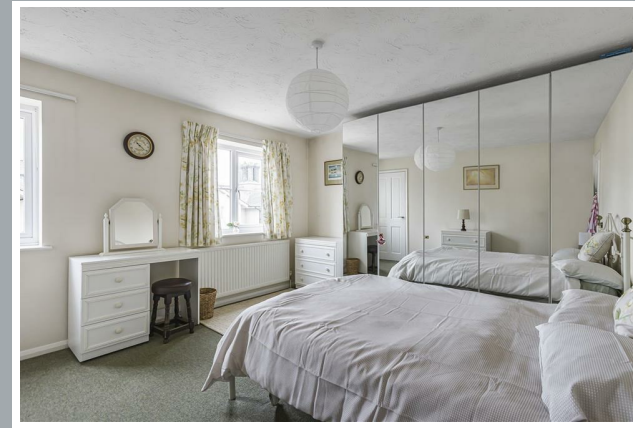
70 Fore Street, Hertford, Hertfordshire, SG14 1BY



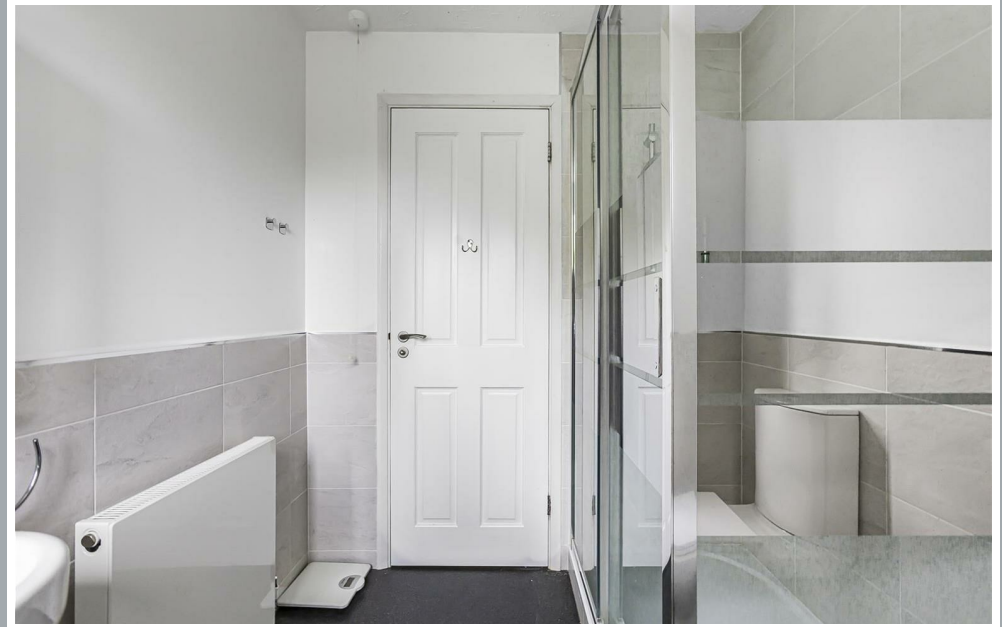
70 Fore Street, Hertford, Hertfordshire, SG14 1BY



70 Fore Street, Hertford, Hertfordshire, SG14 1BY



70 Fore Street, Hertford, Hertfordshire, SG14 1BY

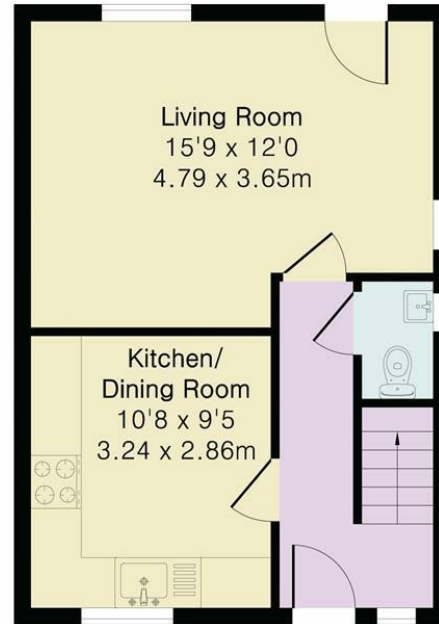


70 Fore Street, Hertford, Hertfordshire, SG14 1BY

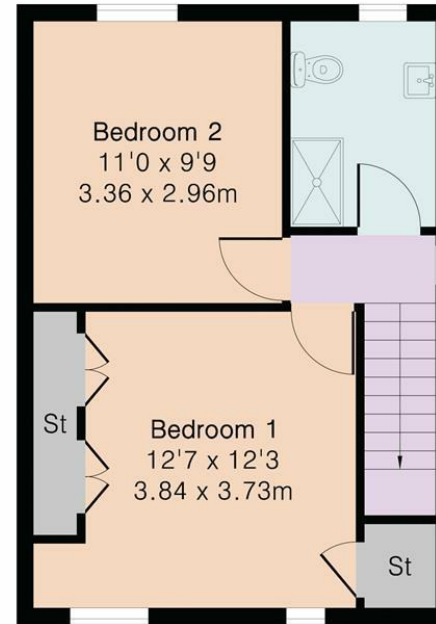
**Approximate Gross Internal Area 720 sq ft - 66 sq m**

Ground Floor Area 360 sq ft – 33 sq m

First Floor Area 360 sq ft – 33 sq m



Ground Floor



First Floor



Floor plan produced in accordance with RICS Property Measurement 2nd Edition. Although Pink Plan Ltd ensures the highest level of accuracy, measurements of doors, windows and rooms are approximate and no responsibility is taken for error, omission or misstatement. These plans are for representation purposes only and no guarantee is given on the total square footage of the property within this plan. The figure icon is for initial guidance only and should not be relied on as a basis of valuation.



These particulars, whilst believed to be accurate are set out as a general outline only for guidance and do not constitute any part of an offer or contract. Intending purchasers should not rely on them as statements of representation of fact, but must satisfy themselves by inspection or otherwise as to their accuracy. No person in this firm's employment has the authority to make or give any representation or warranty in respect of the property.



[stevenoates.com](http://stevenoates.com)