



## 6 Henty Close, Dawlish

Guide Price £305,000





## 6 Henty Close

Dawlish

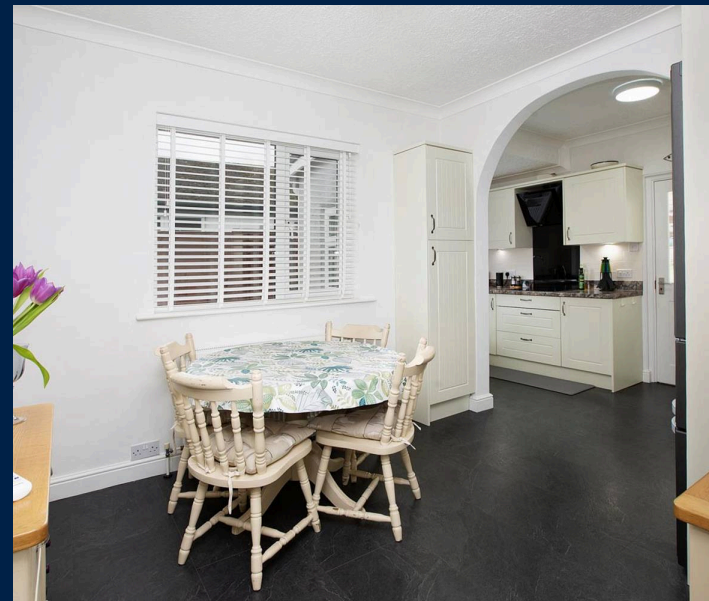
Council Tax band: C

Tenure: Freehold

EPC Energy Efficiency Rating: D

EPC Environmental Impact Rating:

- SEMI DETACHED BUNGALOW SITUATED IN A HIGHLY SOUGHT AFTER LOCATION
- CLOSE TO BUS STOP, LEISURE CENTRE, TOWN AND OTHER AMENITIES
- OFFERING WONDERFUL SEA AND COASTAL VIEWS
- RECEPTION PORCH, SITTING ROOM, DINING ROOM
- FITTED KITCHEN, CONSERVATORY
- TWO DOUBLE BEDROOMS, EN-SUITE SHOWER ROOM/UTILITY AND BATHROOM
- GARDENS, DRIVEWAY PARKING
- UPVC DOUBLE GLAZING, GAS CENTRAL HEATING

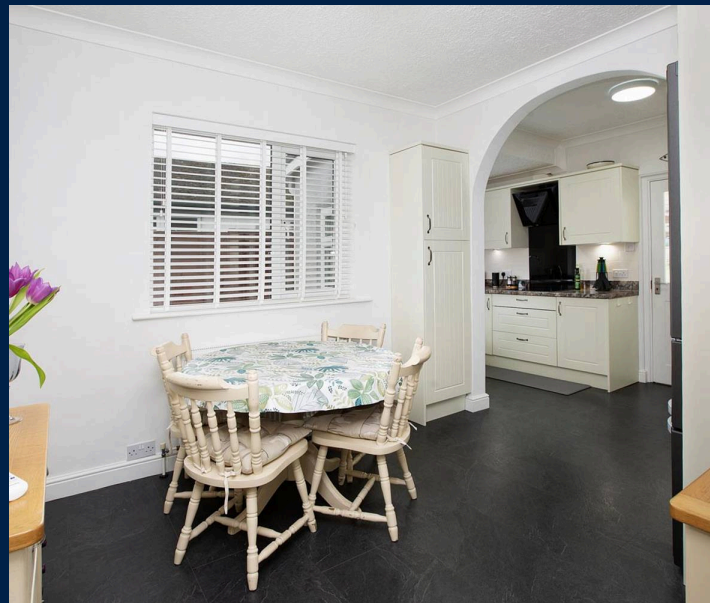


You can include any text here. The text can be modified upon generating your brochure.

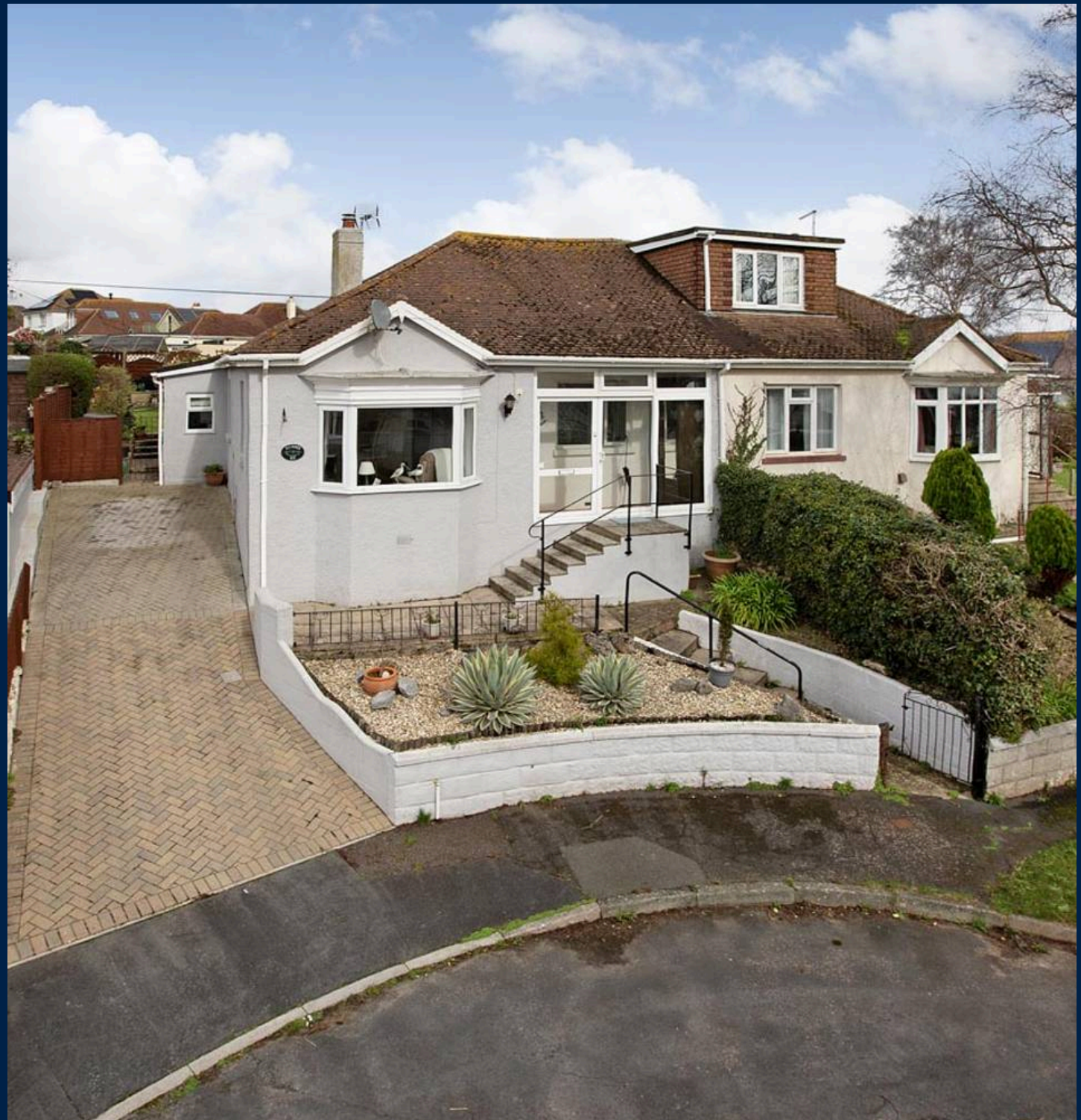




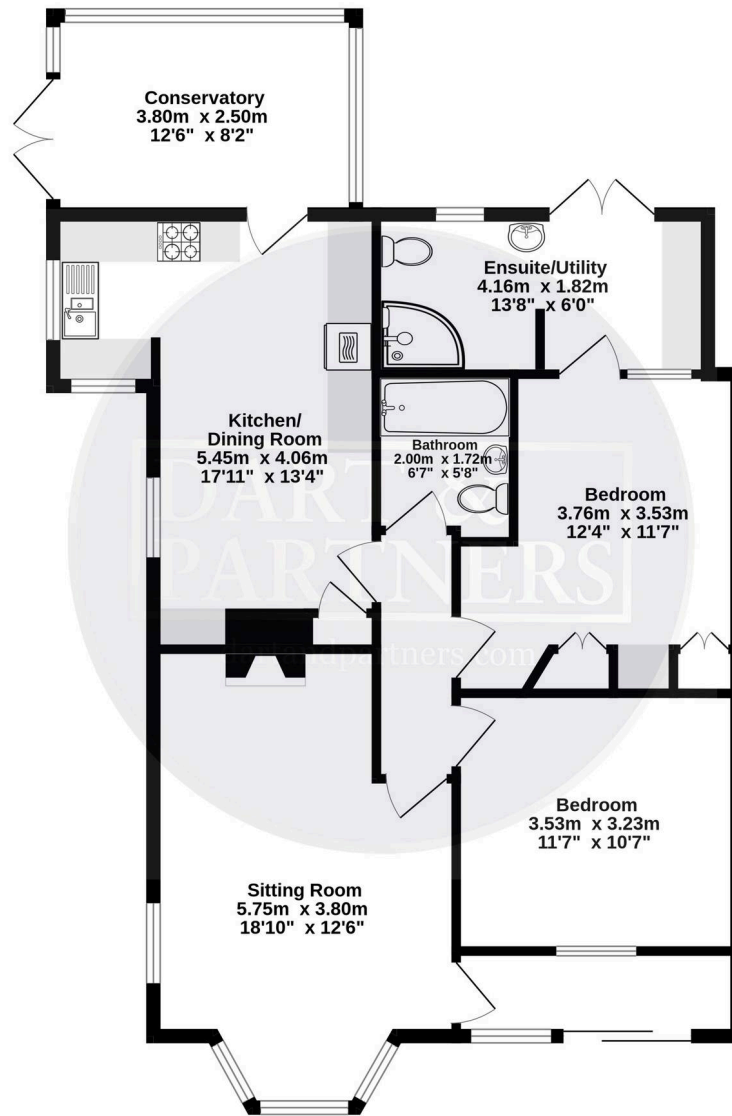
You can include any text here. The text can be modified upon generating your brochure.



You can include any text here. The text can be modified upon generating your brochure.



**Ground Floor**  
87.5 sq.m. (942 sq.ft.) approx.



**TOTAL FLOOR AREA : 87.5 sq.m. (942 sq.ft.) approx.**

Whilst every attempt has been made to ensure the accuracy of the floorplan contained here, measurements of doors, windows, rooms and any other items are approximate and no responsibility is taken for any error, omission or mis-statement. This plan is for illustrative purposes only and should be used as such by any prospective purchaser. The services, systems and appliances shown have not been tested and no guarantee as to their operability or efficiency can be given.  
Made with Metropix ©2026

