



1 Newcastle Place, London

£1,600 Per Week,

NAPIER WATT

T: 0207 935 0011
E: enquiries@napierwatt.co.uk
W: napierwatt.co.uk

35 Berkeley Square, Mayfair, London, W1J 5BF







Description

Enjoy sweeping panoramic views from this stunning 3-bedroom apartment on the 22nd floor of Westmark Tower, part of the prestigious West End Gate development by Berkeley. The elegant open-plan living and dining space flows seamlessly into a contemporary kitchen fitted with high-end appliances. Expansive floor-to-ceiling windows flood the home with natural light and frame spectacular vistas. Each generously sized bedroom offers a serene sanctuary, with the master suite featuring a private en-suite bathroom. The remaining two bedrooms are served by a stylish shared bathroom, all designed with comfort in mind. Residents of Westmark Tower enjoy exclusive access to luxury amenities, including 24 hours concierge, private gym, swimming pool, cinema room, lounge and communal garden.

3 Bedrooms : 2 Bathrooms : Balcony : 24-Hour Concierge : Swimming Pool : Gym : Lifts : Westminster Council Tax Band G : EPC Rating B

Key Features

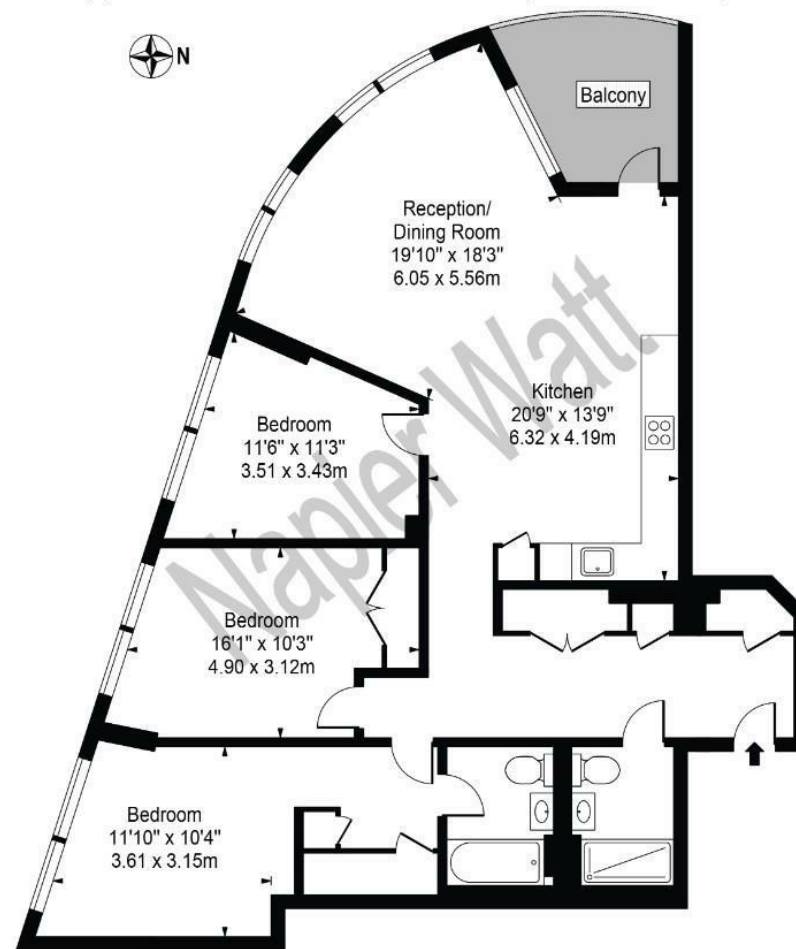
- 24 HOURS CONCIERGE
- MODERN DEVELOPMENT
- PRIVATE BALCONY
- VIEW OVER LOOKING HYDE PARK
- LUXURY AMENITIES
- AIR CONDITIONING
- SHORT WALK TO TUBE STATION

Terms

Fees & Charges: Tenancies exceeding £100,000 Per annum £480 inc VAT, Tenancies where a company is a tenant £480 Inc VAT.

Westmark Tower

Approx. Gross Internal Area 1209 Sq Ft - 112.32 Sq M



Twenty Second Floor

For Illustration Purposes Only - Not To Scale

This floor plan should be used as a general outline for guidance only and does not constitute in whole or in part an offer or contract. Any intending purchaser or lessee should satisfy themselves by inspection, searches, enquiries and full survey as to the correctness of each statement. Any areas, measurements or distances quoted are approximate and should not be used to value a property or be the basis of any sale or let.

IMPORTANT: We would inform prospective purchasers that these sales particulars have been prepared as a general guide only. A detailed survey has not been carried out, nor the services, appliances and fittings tested. Room sizes should not be relied upon for furnishing purposes and are approximate. If floor plans are included, they are for guidance only and illustration purposes only and may not be to scale. If there are any important matters likely to affect your decision to buy, please contact us before viewing the property.