



**HUNTERS**<sup>®</sup>  
HERE TO GET *you* THERE

 2  1  1  D  
HUNTERS

# Sea View Close, Scarborough

Asking Price £200,000



Hunters are pleased to bring to the market this two-bedroom semi-detached bungalow located on Sea View Close, offering practical single-storey living suitable for a range of buyers.

Inside, the accommodation is well laid out with good natural light and a straightforward, functional flow between rooms. The home is accessed via a central hallway which leads to a modern fitted kitchen and a spacious lounge/diner, with doors opening out to the rear garden. There are two bedrooms, along with a family bathroom. The bungalow also benefits from loft access, with the loft space being boarded for additional storage.

Externally, there is a driveway providing off-street parking for multiple vehicles, along with a detached garage fitted with an electric door. To the rear, an enclosed garden features a decking area, ideal for outdoor seating and entertaining.

Situated on the sought-after Sea View Close, the property enjoys a pleasant coastal setting with nearby access to scenic walks and sea views. The location offers a good balance of peace and convenience, with local amenities, shops, and transport links within easy reach. Scarborough town centre is just a short drive away, along with popular beaches, making this an ideal position for those looking to enjoy coastal living while remaining well connected.

Overall, this is a well-positioned and practical home, and viewing is highly recommended.

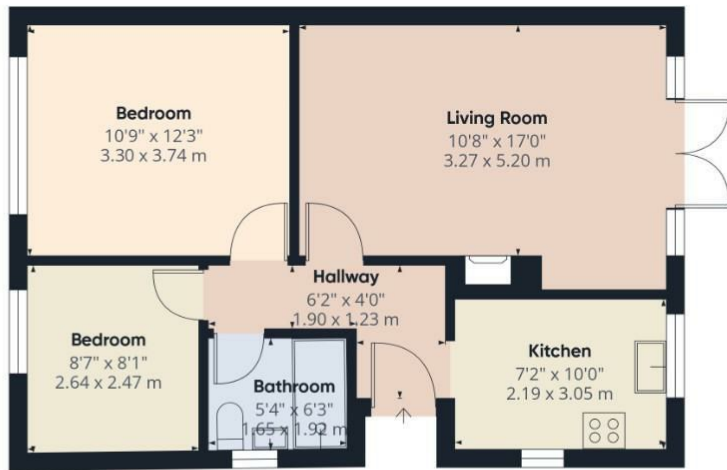
## KEY FEATURES

- Two-bedroom semi-detached bungalow
- Loft access with boarded space for additional storage
- Driveway providing off-street parking for multiple vehicles
- Enclosed rear garden with decking area
- Located in a Sought After Area
- Single Storey Living Accommodation









Ground Floor Building 1



Ground Floor Building 2

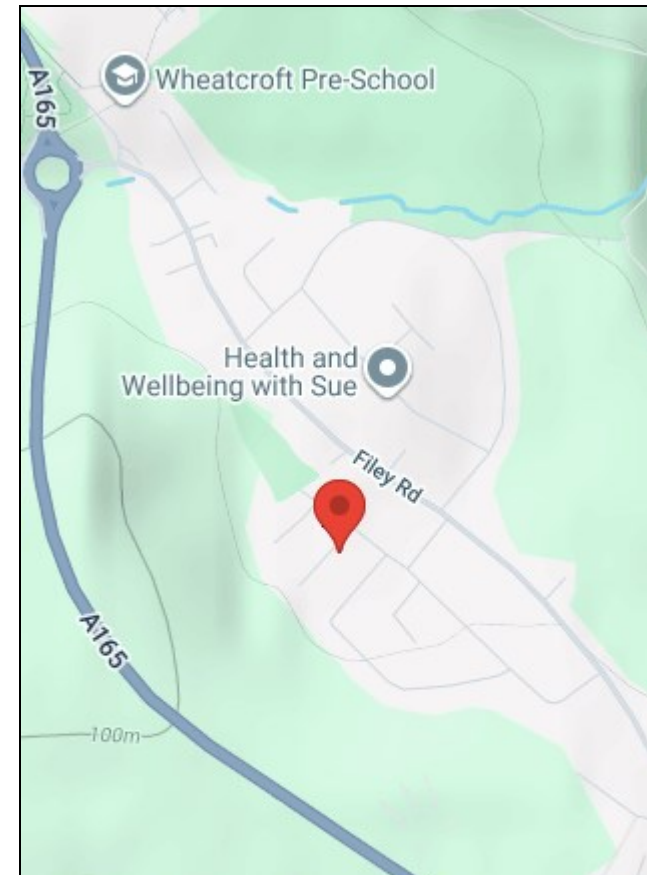


Approximate total area<sup>(1)</sup>  
720 ft<sup>2</sup>  
66.9 m<sup>2</sup>

(1) Excluding balconies and terraces

Calculations reference the RICS IPMS 3C standard. Measurements are approximate and not to scale. This floor plan is intended for illustration only.

GIRAFFE 360



Energy Efficiency Rating	
Current	Potential
	83
64	

Environmental Impact (CO <sub>2</sub> ) Rating	
Current	Potential

33 Huntriss Row, Scarborough, YO11 2ED | [01723 336760](tel:01723336760)  
[scarborough@hunters.com](mailto:scarborough@hunters.com) | [www.hunters.com](http://www.hunters.com)



This Hunters business is independently owned and operated by Coast and Country Scarborough Ltd | Registered Address: C/O Dutton Moore Aldgate House 1-4 Market Place Hull HU1 1RS | Registered Number: 5974243 England and Wales | VAT No: 212 2999 13 with the written consent of Hunters Franchising Limited