



52 Dudley Road, Grantham
Grantham

£350,000

DavidGrace





52 Dudley Road

Grantham, Grantham

Four-storey period home in the heart of Grantham, overlooking the River Witham. Beautifully finished, full of character, flexible living and a landscaped riverside garden. Council Tax band: B

Tenure: Freehold

EPC Energy Efficiency Rating: D

EPC Environmental Impact Rating: E

- Four Storey Character Period Semi-Detached Home in Central Grantham
- Character Throughout - Fire Places and High Ceilings
- Warm Kitchen and Dining Room - Perfect for Family Time
- Large Living Room with Bay Window
- Flexible Basement Level - Great for Multi-Generational Living
- Wine Cellar/Pantry/Storage Space
- Four Double Bedrooms All With Ensuites - Great for Families
- Landscaped Tiered Garden Overlooking the River
- Off-Road Parking and No Upward Chain
- EPC - D

DavidGrace



Entrance Hall

Living Room

14' 1" x 13' 1" (4.30m x 4.00m)

Dining Room

13' 1" x 12' 10" (4.00m x 3.90m)

Kitchen

9' 10" x 6' 11" (3.00m x 2.10m)

Landing

Bedroom 1

13' 1" x 12' 10" (4.00m x 3.90m)

Ensuite

Bedroom 2

13' 1" x 12' 10" (4.00m x 3.90m)

Ensuite

Bedroom 3

28' 3" x 11' 6" (8.60m x 3.50m)

Ensuite

Bedroom 4/Study

12' 6" x 10' 6" (3.80m x 3.20m)

Utility Room

Shower Room

Wine Cellar/Pantry





GARDEN

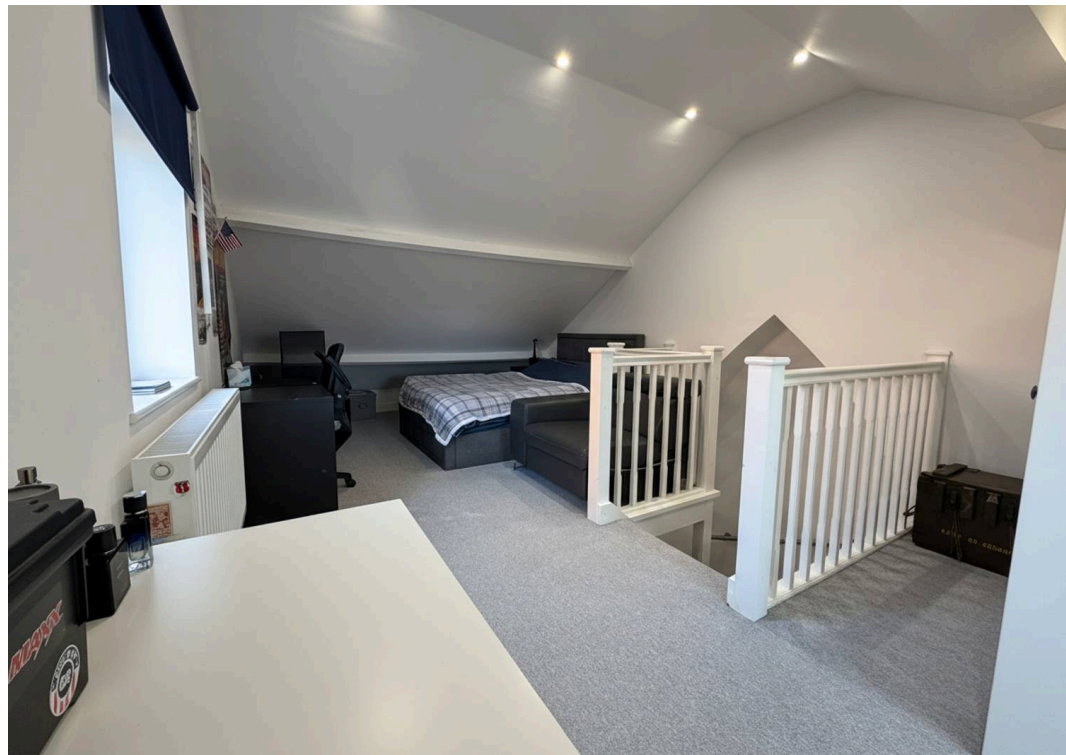
DRIVEWAY

--

OFF STREET

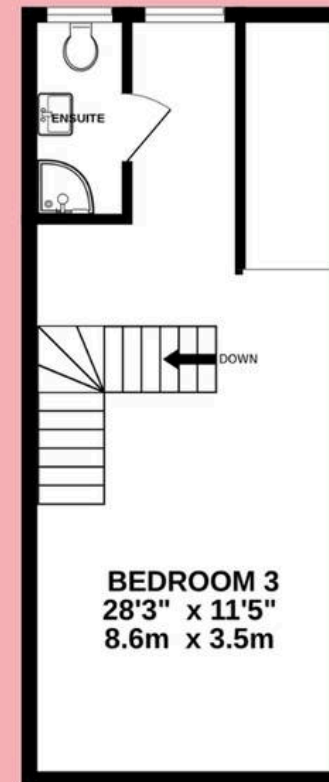
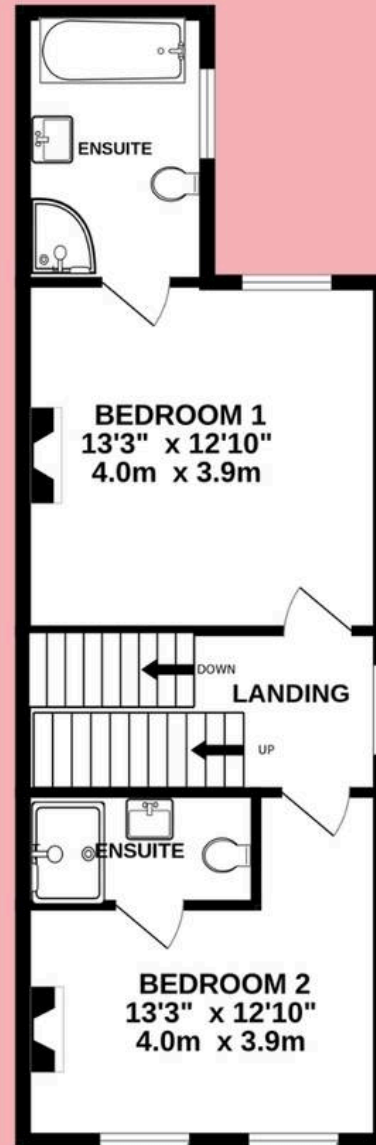
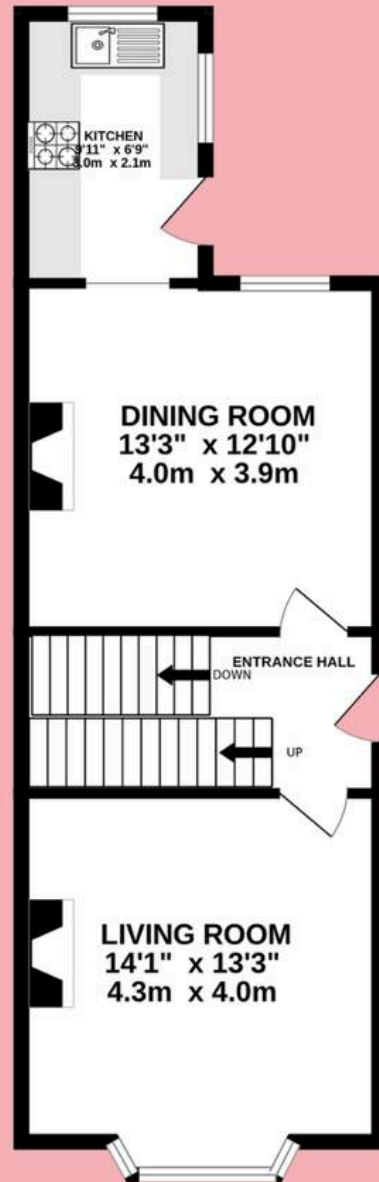
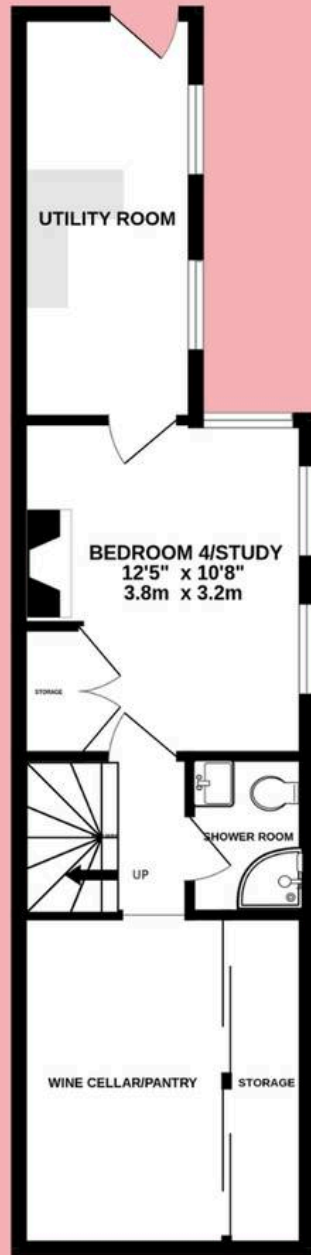






Dudley Road, Grantham

Approx Internal area: 1698.54sq ft/ 157.8m²





David Grace Estate Agents

71 High Street, Grantham - NG31 6NR

01476 833833 • sell@davidgrace.co.uk • www.davidgrace.co.uk

DavidGrace