



Guide Price
£450,000

Freehold

3x  2x  2x 

**Meadow Walk,
Snodland, Kent, ME6**

OVER 60?

Secure this property
for up to **59% less!**

Wards
Helping you move forwards



Main features

- This is a fantastic home with the wow factor and it's chain free
- Situated in an extremely desirable and peaceful location
- Excellent size plot offering an amazing garden - perfect for families
- New kitchen and flooring downstairs so ready to move into
- Opportunity to add your own stamp

Accommodation

GROUND FLOOR

Entrance Hall
 Lounge: 12'11 x 12'3 (3.94m x 3.74m)
 Dining Area: 18'7 x 9'11 (5.67m x 3.02m)
 Kitchen: 10'2 x 9'9 (3.10m x 2.97m)
 Inner Lobby
 Shower Room: 7'0 x 5'11 (2.14m x 1.80m)

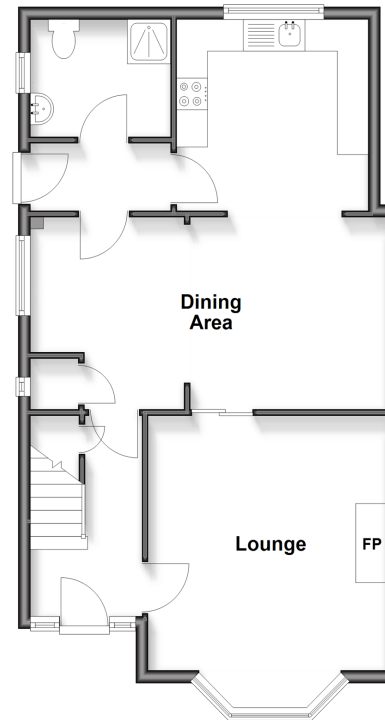
FIRST FLOOR

Landing
 Bedroom 1: 13'0 x 10'1 (3.97m x 3.08m)
 Bedroom 2: 10'10 x 9'11 (3.30m x 3.02m)
 Bedroom 3: 8'11 x 8'3 (2.72m x 2.52m)
 Bathroom

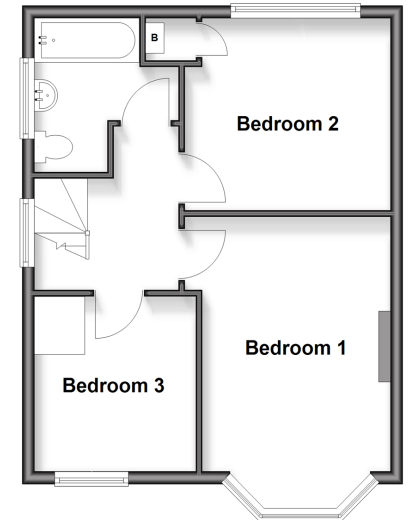
OUTSIDE

Front and Rear Gardens
 Garage and Driveway

Ground Floor
 Approx. 57.1 sq. metres (615.0 sq. feet)



First Floor
 Approx. 41.7 sq. metres (448.5 sq. feet)



Call Snodland - 01634 245055 ■ wardsofkent.co.uk

■ Legal advice should be taken to verify fixtures/fittings, planning, alterations and/or lease details
 ■ Through a Homewise Home For Life Plan people aged 60+ can secure this property for up to 59% less, by purchasing a Lifetime Lease

■ Appliances & services are untested, dimensions are approximate and floor plans are not to scale



13821899/20260111/TT/LK