



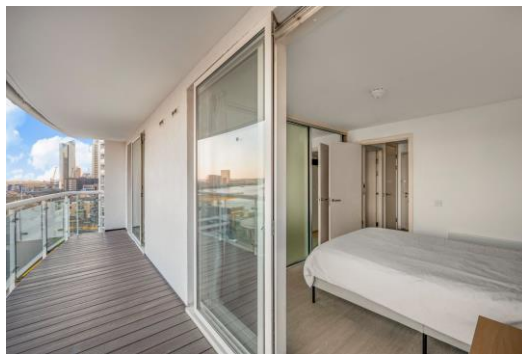
Aurora Building

164 Blackwall Way, E14

Asking Price £350,000

A stylish 1 bedroom riverside apartment set within the sought-after Docklands area, offering modern living with exceptional connectivity and iconic views across London.

CHESTERTONS



Aurora Building

164 Blackwall Way, E14

- 1 Bedroom | 1 Bathroom.
- 24 hour Concierge.
- Close to Blackwall DLR.
- Secure underground parking.
- Beautiful views of Greenwich Peninsula.



A stylish 1 bedroom riverside apartment set within the sought-after Docklands area, offering modern living with exceptional connectivity and iconic views across London.

Positioned in the heart of Blackwall, the property enjoys a prime location moments from Canary Wharf, renowned for its vibrant mix of restaurants, bars, cafés and luxury shopping. Residents benefit from easy access to everyday conveniences including local supermarkets, gyms and the popular Chrisp Street Market, all within close proximity. The area also offers scenic riverside walks along the Thames, creating a perfect balance between city living and outdoor leisure.

The apartment itself features a bright and contemporary open-plan living space with elegant wooden flooring throughout, complemented by a fully integrated kitchen fitted with modern appliances including a dishwasher, fridge-freezer, oven and washer/dryer. Floor-to-ceiling windows invite an abundance of natural light, enhancing the sense of space and style.

Tenure: Leasehold 975 years approx. remaining.

Service Charge: £4,621 pa approx.

Ground Rent: £774 pa.

Local Authority: Tower Hamlets

Council Tax Band: D

Score	Energy rating	Current	Potential
92+	A		
81-91	B		86 B
69-80	C	75 C	
55-68	D		
39-54	E		
21-38	F		
1-20	G		

Chestertons Canary Wharf & Greenwich Sales

Harbour Island

28 Harbour Exchange Square

London

E14 9GE

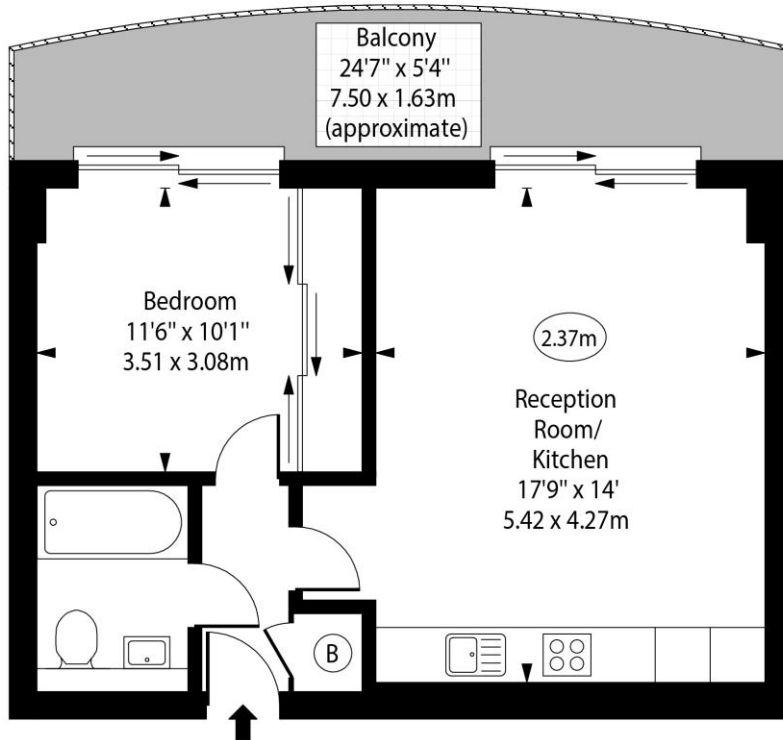
canarywharf@chestertons.co.uk

020 7510 8300

chestertons.co.uk

Aurora Building, Blackwall Way, E14

○ - Ceiling Height



Ninth Floor

Approx Gross Internal Area 465 Sq Ft - 43.20 Sq M

Every attempt has been made to ensure the accuracy of the floor plan shown. However, all measurements, fixtures, fittings, and data shown are approximate interpretations and for illustrative purposes only. Measured according to the RICS. Not To Scale.

www.goldlens.co.uk
Ref. No. 031008D

