



**GASCOIGNE
HALMAN**

7 CROFTSIDE WAY, WILMSLOW SK9 1EP

THE AREAS LEADING ESTATE AGENT



7 CROFTSIDE WAY, WILMSLOW SK9 1EP

£550,000

An attractive modern detached home ideally located only a short walk to Wilmslow town centre and train station boasting four bedrooms, two bathrooms and a private South facing garden.

- Attractive Modern Detached Family Home
- Four Bedrooms
- Two Bathrooms
- Main Bedroom With Sharps Fitted Wardrobes And En-Suite Shower
- Spacious Dining Kitchen
- Ample Off-Road Parking
- South Facing Garden And Detached Garage
- Only A Short Walk To Wilmslow Town Centre And Train Station





This beautifully maintained detached family home offers immaculate presentation throughout and offers a convenient and popular location close to local amenities, Wilmslow High School and excellent transport links.

Internally the property comprises; welcoming entrance hallway with downstairs wc and spindle balustrade staircase leading to the first floor. To the front of the property there is a large living room with feature fireplace and attractive box window, double doors then lead through to the spacious dining kitchen which offers a range of base and wall units, integrated appliances and sliding doors leading to the rear conservatory.

To the first floor there are four bedrooms, the main bedroom comes with a range of Sharps fitted wardrobes and an en-suite shower room. Bedroom two and three come with fitted wardrobes and a family bathroom with three piece suite serves all three bedrooms.

Externally the property offers a large newly laid block paviour frontage and separate driveway which provides ample off road parking and access to the detached garage whilst to the rear there is a delightful private South facing courtyard style garden with a high degree of privacy.

LOCATION

Conveniently situated walking distance of Wilmslow town centre with its excellent range of shops and general services, restaurants and cafes. There are good schools in the area, both State and Private, for children of all ages. Wilmslow railway station is on the main line to London Euston and also provides a regular service to Manchester and surrounding districts. The North West motorway network is within a short drive as is Manchester Airport and the A34 Wilmslow by-pass which provides access to the large stores at Handforth Dean and Cheadle including Marks & Spencer, Tesco, John Lewis and Sainsburys. Wilmslow has a leisure centre and there are also a number of private sporting clubs in the area.

DIRECTIONS

Sat-Nav: SK9 1EP

TENURE

Freehold (subject to verification by solicitors).

SERVICES (NOT TESTED)

Services have not been tested and you are advised to make your own enquiries and/or inspections.

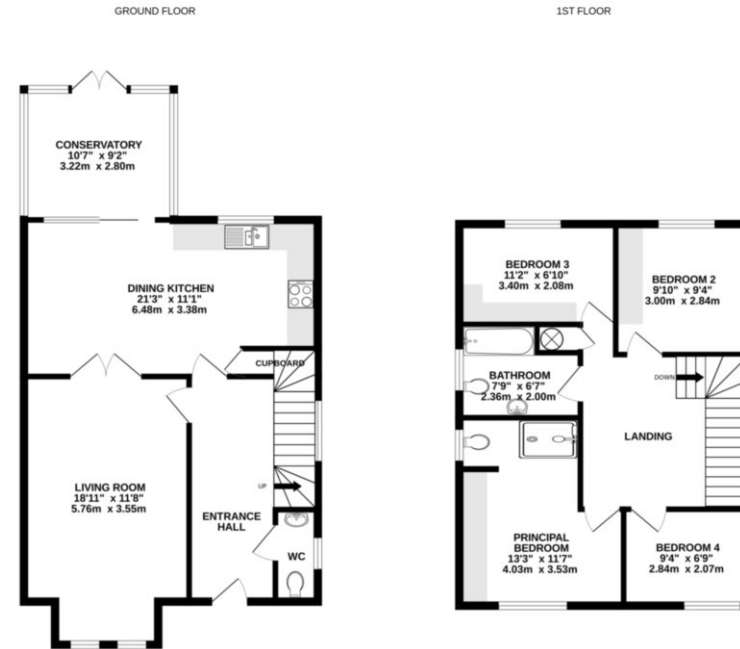
LOCAL AUTHORITY

Cheshire East. Property Band: F

VIEWING

Viewing strictly by appointment through the Agents.

FLOORPLAN



While every attempt has been made to ensure the accuracy of the floorplan contained here, measurements of doors, windows, rooms and any other items are approximate and no responsibility is taken for any error, omission or misstatement. This plan is for illustrative purposes only and should be used as a guide only for prospective purchasers. The services, systems and appliances shown have not been tested and no guarantee is given as to their operation or efficiency can be given.
Made with Metaphor (2020)

NOTICE Gascoigne Halman for themselves and for the vendors or lessors of this property whose agents they are give notice that: (i) the particulars are set out as a general outline only for the guidance of intending purchasers or lessees, and do not constitute, nor constitute part of, an offer or contract; (ii) all descriptions, dimensions, references to condition and necessary permissions for use and occupation, and other details are given in good faith and are believed to be correct but any intending purchasers or tenants should not rely on them as statements or representations of fact but must satisfy themselves by inspection or otherwise as to the correctness of each of them; (iii) no person in the employment of Gascoigne Halman has any authority to make or give any representation or warranty whatever in relation to this property.

WILMSLOW OFFICE

01625 536434

wilmslow@gascoignehalman.co.uk

40 Alderley Road, Wilmslow, Cheshire, Wilmslow, SK9 1NY

**GASCOIGNE
HALMAN**