



Honor Oak Park, SE23 | £450,000

02087029999

newhomes@pedderproperty.com

pedder
NEW HOMES

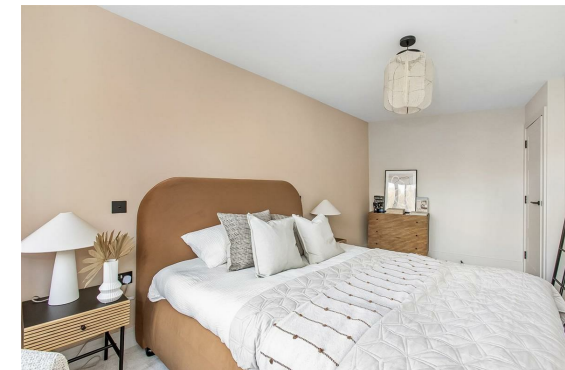
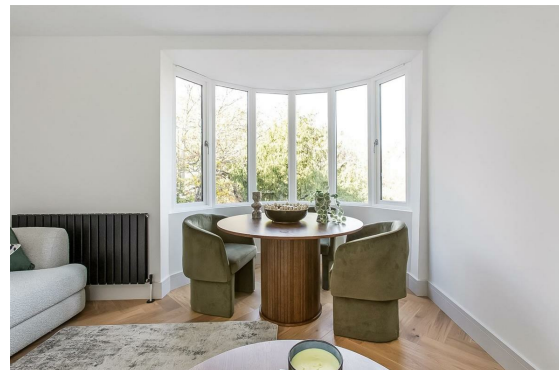


In General

- Restored Mansion House
- Timer Sash Windows
- Quartz Worktops
- Herringbone Flooring
- Shared Garden
- Secure Cycle Storage
- Share of Freehold
- Bosch Appliances
- Close to Overground Station (Honor Oak)
- Opposite One Tree Hill

In Detail

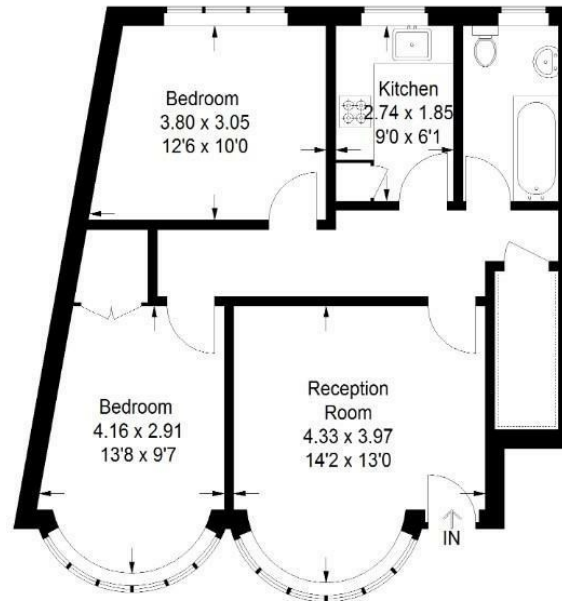
****GUIDE PRICE: £450,000 - £475,000**** Evergreen Place is a restored Mansion House containing nine brand new apartments in the heart of Honor Oak.



Floorplan

Evergreen Place, SE23

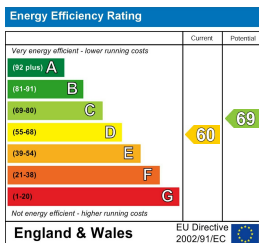
Approximate Gross Internal Area
59.9 sq m / 645 sq ft



First Floor

 = Reduced headroom below 1.5 m / 5'0

Copyright www.pedderproperty.com © 2025
These plans are for representation purposes only as defined by RICS - Code of Measuring Practice. Not drawn to Scale. Windows and door openings are approximate. Please check all dimensions, shapes and compass bearings before making any decisions reliant upon them.



Pedder Property Ltd trading as Pedder for themselves and for the vendor/landlord of this property whose agents they are, give notice that (1) these particulars do not constitute any part of an offer or contract, (2) all statements contained within these particulars are made without responsibility on the part of Pedder or the vendor/landlord, (3) whilst made in good faith, none of the statements contained within these particulars are to be relied upon as a statement of representation or fact, (4) any intending purchaser/tenant must satisfy him/herself by inspection or otherwise as to the correctness of each of the statements contained within these particulars, (5) the vendor/landlord does not make or give either Pedder or any person in their employment any authority to make or give representation or warranty whatsoever in relation to this property.