



Falcon

01752 600444

15 Squirrel Close

Crownhill, Plymouth, PL6 5FJ

Guide price £230,000- £240,000





In Brief

Semi detached beautiful home in quiet Cul-de-sac

Reception Rooms Living - Dining room

Bedrooms 3 Bedrooms

Heating Gas Central Heating

Area 875 Sq Ft

Tenure Freehold

Parking Allocated parking

Council Tax B

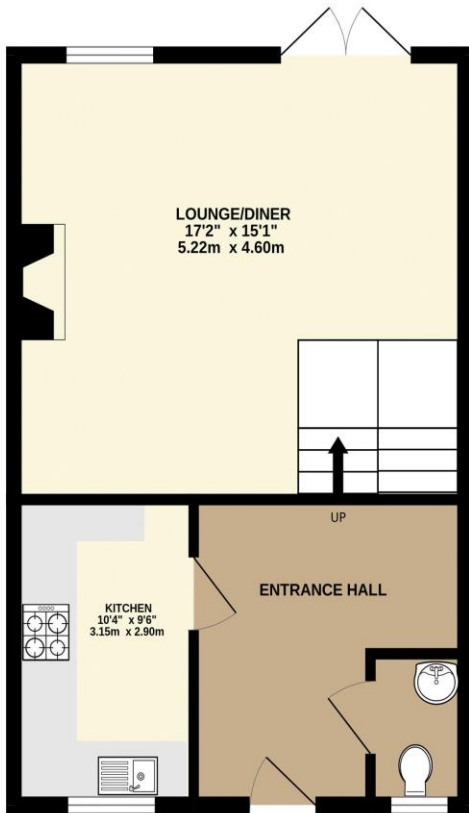
Description

A fantastic opportunity to acquire this beautifully presented three-bedroom semi-detached property, tucked away in a quiet cul-de-sac location close to Sir John Hunt School in the sought-after area of Crownhill. Offered to the market chain-free, this modern home has been thoughtfully designed to provide versatile and cosy accommodation split across staggered levels, creating a wonderful sense of space and separation throughout. Upon entering the property, you are welcomed by a modern fitted kitchen and convenient downstairs cloakroom, with a short staircase leading down to an impressive larger-than-average living/dining room. This fantastic living space enjoys patio doors opening onto the fully enclosed level rear garden, which benefits from side access and a high degree of privacy thanks to the mature trees behind. To the upper levels, the property offers two well-proportioned bedrooms, with a further staircase leading to the family bathroom and third bedroom. The split-level layout, separated only by a few steps between floors, gives the home a warm and characterful feel while also offering flexibility for a variety of living arrangements. Further benefits include gas central heating, allocated parking, and the reassurance of a modern build, with the property being approximately 14 years old. Rarely available in this desirable location, the property is ideally situated close to excellent schools, Crownhill Village, Derriford Hospital, and convenient links to the A38. An internal viewing is highly recommended to fully appreciate the space, privacy, and versatility this fantastic home has to offer.

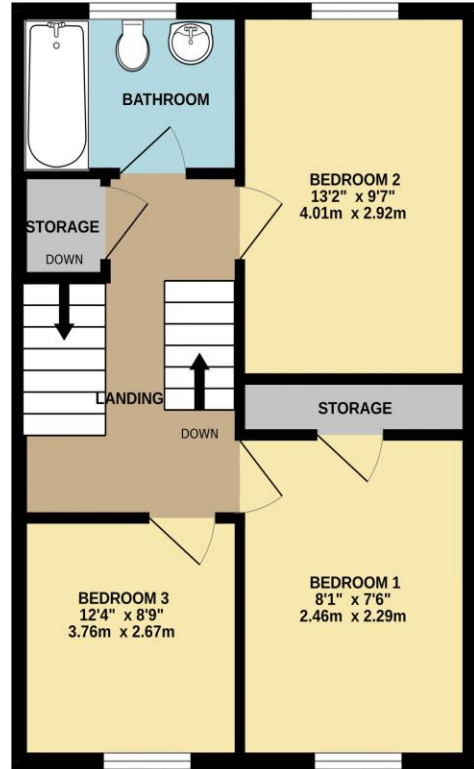
Need A Mortgage?

Floor Plans

GROUND FLOOR
434 sq.ft. (40.3 sq.m.) approx.



1ST FLOOR
441 sq.ft. (40.9 sq.m.) approx.



TOTAL FLOOR AREA : 875 sq.ft. (81.3 sq.m.) approx.
Made with Metropix ©2026



Fixed Price Conveyancing

A complete solution from just £600 with No sale – No Fee



We have not tested any apparatus, equipment, fixtures and fittings or services and so cannot verify that they are connected, in working order or fit for the purpose. Neither have we had sight of the legal documents to verify the Freehold or Leasehold status of any property; or sight of any consents, including Planning Permissions, building Regulations and Breaches of Covenants that may be required for alterations to the property. A buyer is advised to obtain verification from their Solicitor and/or Surveyor. Items shown in photographs are NOT included unless specifically mentioned within the Sales Particulars. Any floor plans on these details are not drawn to scale and are intended for guidance only

Falcon Property is an Introducer to Bradleys Financial Management Ltd. They are appointed representatives of Sesame Ltd who are authorised and regulated by the Financial Services Authority. Bradleys do not charge for mortgage advice, however a fee paying option is available. Typical fee is £195. Bradleys Financial Management: 16 Mannamead Road, Mutley, Plymouth, PL4 7AA

Your home may be repossessed if you do not keep up repayments on your mortgage.

