



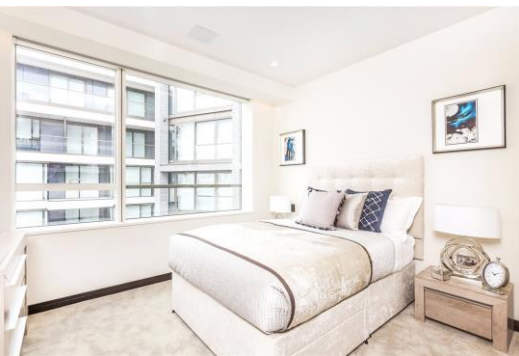
# Sandringham House

Earls Way, SE1

£8,333.33 per month  
(£1,923.08 per week)

Wheel chair accessible. A stunning apartment found on the 8th floor of this prestigious development, One Tower Bridge. The apartment is beautifully furnished and boasts a spacious open plan reception, solid parquet flooring, and balcony.

**CHESTERTONS**



# Sandringham House

## Earls Way, SE1

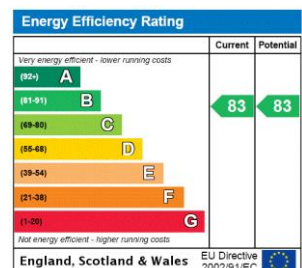
- 8th floor apartment in One Tower Bridge
- Private balcony
- Views across Tower Bridge
- 24 hour Harrods concierge
- On-site gym, swimming pool and spa facilities

A stunning apartment found on the 8th floor of this prestigious development, One Tower Bridge. The apartment is beautifully furnished and boasts a spacious open plan reception and kitchen with solid parquet flooring, Miele appliances and private balcony overlooking Tower Bridge. The property further benefits from a master bedroom with dressing area and en-suite bathroom, two double bedrooms with generous storage and en-suite bathrooms and a guest cloakroom.

One Tower Bridge benefits from a 24 hour Harrods concierge, on-site gym and spa facilities.

The apartment is in an excellent location, moments from the river and the array of cafes, bars and restaurants that Shad Thames has to offer. It is also a short walk to London Bridge and within easy reach of The City.

**Minimum Term:** months  
**Deposit Required:** £9,615.38  
**Local Authority:** London Borough of Southwark  
**Council Tax Band:**  
**EPC Rating:** B  
**Furnished**



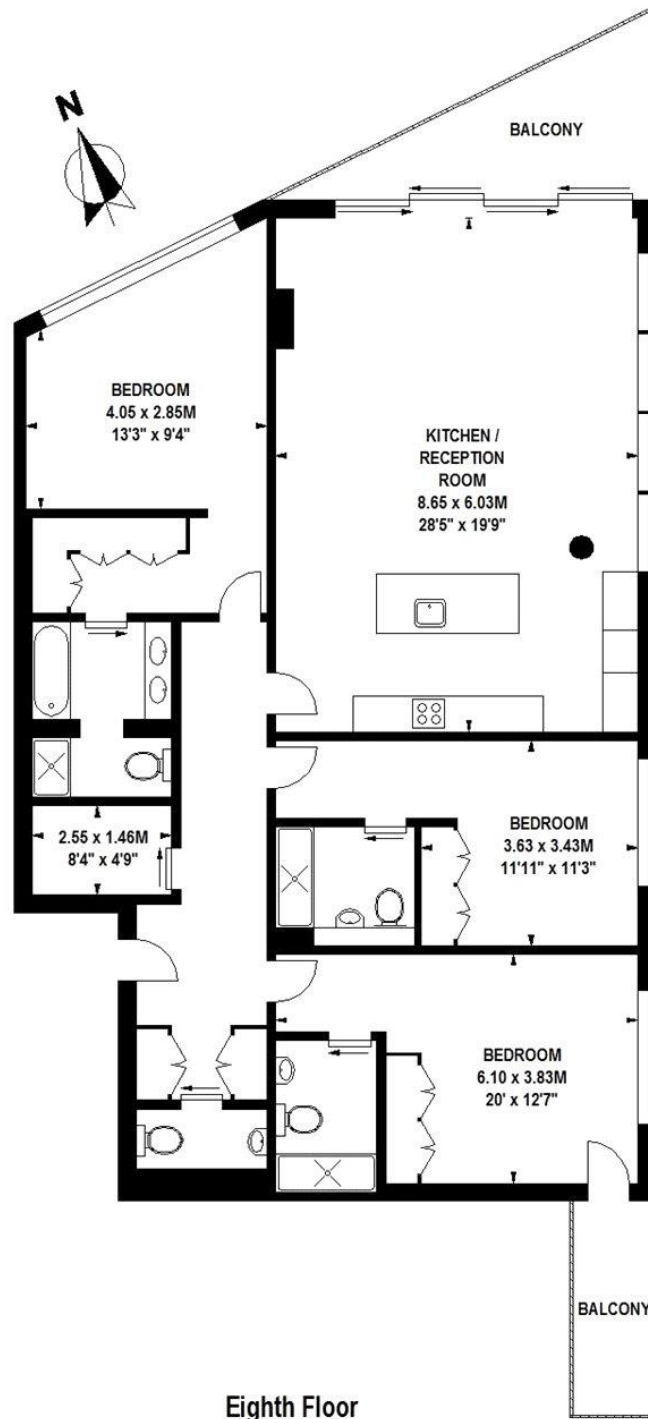
### Chestertons Tower Bridge Lettings

220 Tower Bridge Road  
 Tower Bridge  
 London  
 SE1 2UP  
 towerbridgelettingsusers@chestertons.co.uk  
 02073576911  
 chestertons.co.uk

Additional tenant charges apply (fees apply to non-AST tenancies only)  
 Tenancy Agreement Fee: £300  
 References per Tenant/Guarantor: £60  
 Inventory check (approx. £100 – £250 inc. VAT)  
[chestertons.co.uk/property-to-rent/applicable-fees](http://chestertons.co.uk/property-to-rent/applicable-fees)

# Sandringham House, SE1

Approximate Gross Internal Area 153 sq m / 1647 sq ft



Floor Plan produced for Chestertons by Mays Floorplans ©. Tel 020 3397 4594  
Illustration for identification purposes only, not to scale  
All measurements are maximum, and include wardrobes and window bays where applicable

Chesterton UK Services Limited trading as Chestertons for themselves and for the vendor of this property whose agents they are, give notice that (i) these particulars do not constitute any part of an offer or contract, (ii) all statements contained within these particulars are made without responsibility on the part of Chestertons or the vendor, (iii) whilst made in good faith, none of the statements contained within these particulars are to be relied upon as a statement or representation of fact, (iv) any intending purchasers must satisfy themselves by inspection or otherwise as to the correctness of each of the statements contained within these particulars, (v) the vendor does not make or give either Chestertons or any person in their employment any authority to make or give representation or warranty whatsoever in relation to this property. Wide angle lenses may be used. ©Copyright Chestertons | Chesterton Global Ltd | Registered Office 40 Connaught Street, Hyde Park, London W2 2AB Registered Company Number 05334580.



This paper is  
100% recyclable