



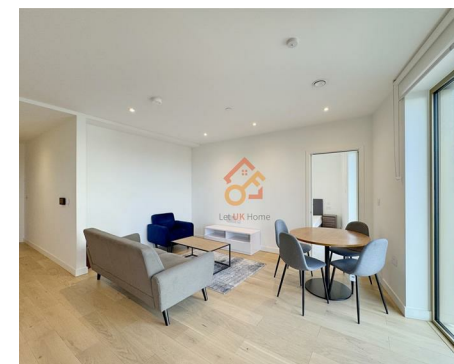
Let **UK** Home

1 Bedrooms

Flat

Located in London

£2,050 Per Month



info@letukhome.co.uk

<https://www.letukhome.co.uk/>

01795 358 886



1 Ashley Road London

N17 9QY



Let UK Home are excited to offer this spectacular one bedroom apartment in the heart of East Apartments part of the 1 Ashley Road in Tottenham Hale.

The studio comprises a spacious open kitchen with a stylishly attached dining area, a magnificent living room, one bright bedroom with built-in wardrobes and one modern bathrooms.

The building is designed with a series of high-quality amenities. These include an impressive entrance lobby with 24-hour concierge, a welcoming residents lounge to have a coffee with friends or work somewhere inspiring, and private courtyards with lush planting. Seven-times Chelsea Flower Show gold medal winner Andy Sturgeon Design has created a first-floor podium courtyard and fifth-floor roof terrace for residents to enjoy.

Tottenham Hale brings together a wide range of dining and shopping options, from a variety of cafes, bars and restaurants to well-known brands such as Next, TK Maxx, Currys and Boots in the retail shopping park, providing all the amenities you need in city living. There are abundant commercial supporting facilities and living facilities around the development. Residents can enjoy large supermarkets, various living service facilities as well as leisure and entertainment venues. And there are many surrounding parks and green spaces, providing an idyllic environment. Just a few minutes' walk away is the enviable nature reserve - Walthamstow Wetlands in the center of the city. In addition, Tottenham Hale Underground Station and Railway Station are just a stone's throw away, and it can quickly reach the most important transportation hub in London, King's Cross Station.

1 Ashley Road London

£2,050 Per Month

- 2nd Floor
- 24h Security
- Roof Terrace
- EPC Rating: B



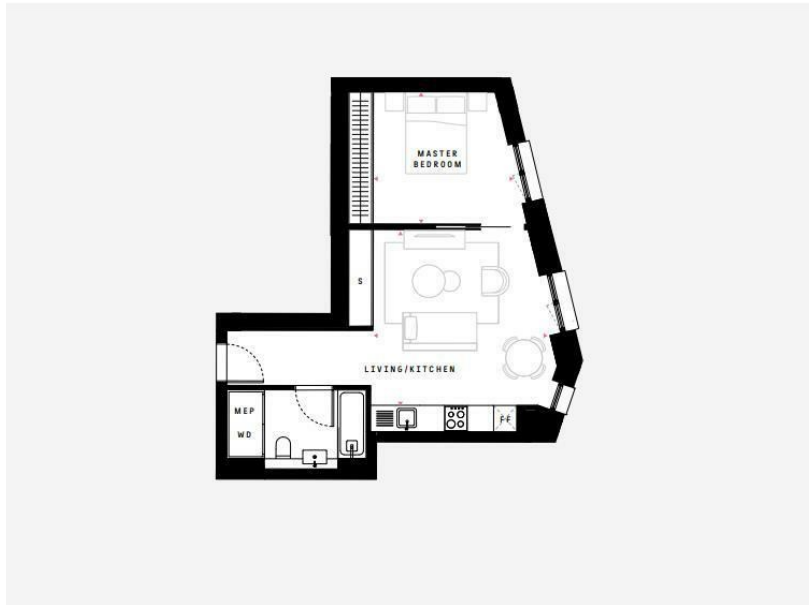
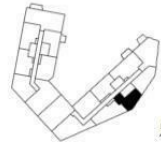
- Concierge Service
- Residents Lounge
- Co-working Space



TYPE 1B
STUDIO: FLOORS 2, 4, 6, 8, 10, 12

| | | |
|----------------|--------------|---------------|
| NSA | 48.7 sq m | 524 sq ft |
| LIVING/KITCHEN | 4.33 × 4.38m | 14'2" × 14'4" |
| MASTER BEDROOM | 3.25 × 3.46m | 10'8" × 11'4" |

E.24 E.44 E.63
 E.83 E.103 E.123



Let **UK** Home

3F 2 Eastbourne Terrace
 Paddington
 London
 W2 6LG

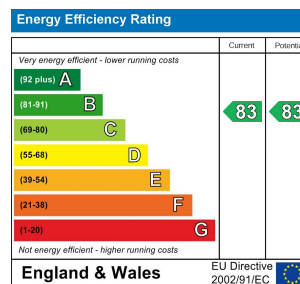
01795 358 886

info@letukhome.co.uk

Council Tax Band: C

Local Authority:

Agents Note: Whilst every care has been taken to prepare these particulars, they are for guidance purposes only. All measurements are approximate and are for general guidance purposes only and whilst every care has been taken to ensure their accuracy, they should not be relied upon and potential buyers/tenants are advised to recheck the measurements.



<https://www.letukhome.co.uk/>