



Glycena Road
London, SW11

CHESTERTONS





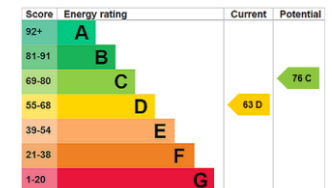
This charming two-bedroom apartment offers 854 sqft of living space arranged over two floors benefiting from a private garden.

On the ground floor, the home opens into a bright front living room featuring a characterful fireplace and an attractive bay window that fills the room with natural light. Further there is a spacious double bedroom overlooking a quiet courtyard. The ground floor also includes a family bathroom with a bathtub, access to a cellar offering useful storage space, and a separate eat-in kitchen with ample room for dining. The kitchen leads directly onto the private garden, creating a great space for indoor-outdoor living and entertaining. Upstairs, the property features a generous master bedroom complete with built-in storage and a private en-suite bathroom.

Glycena Road is situated on a sought-after residential street in the heart of Battersea. Exceptionally well connected, with Clapham Junction Station approximately half a mile from the property, providing fast and frequent rail connections into Victoria, Waterloo, and destinations across London and the south. The area also offers excellent local amenities, including boutique shops, cafés, and riverside walks along Battersea Park.

- Two Bedrooms
- Two Bathrooms
- One Reception
- Garden
- Ground Floor

Asking Price £675,000



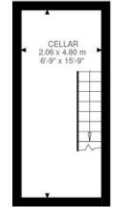
Tenure: Leasehold 96 years 4 months
Service Charge: TBC
Ground Rent: TBC
Local Authority: Wandsworth Council
Council Tax Band: D

Chestertons Battersea & Clapham Sales

6 Battersea Rise
 London
 SW11 1ED
 battersearise@chestertons.co.uk
 020 7924 4400
 chestertons.co.uk



Ground Floor
584 ft²



CELLAR
106 ft²



First Floor
164 ft²

Glycena Road, SW11
Approximate Gross Internal Area
79.34 SQ.M / 854 SQ.FT

KEY: CH = Ceiling Height
[Restricted Head Height]

Illustration for identification purposes only. Not to scale.
Floor Plan Drawn According To RICS Guidelines.

Chesterton UK Services Limited trading as Chestertons for themselves and for the vendor of this property whose agents they are, give notice that (i) these particulars do not constitute any part of an offer or contract, (ii) all statements contained within these particulars are made without responsibility on the part of Chestertons or the vendor, (iii) whilst made in good faith, none of the statements contained within these particulars are to be relied upon as a statement or representation of fact, (iv) any intending purchasers must satisfy themselves by inspection or otherwise as to the correctness of each of the statements contained within these particulars, (v) the vendor does not make or give either Chestertons or any person in their employment any authority to make or give representation or warranty whatsoever in relation to this property. Wide angle lenses may be used. ©Copyright Chestertons | Chesterton UK Services Limited | Registered Office 40 Connaught Street, Hyde Park, London W2 2AB Registered Company Number 05334580.



This paper is
100% recyclable