



31 Draycott Avenue | | LONDON | SW3 3BS

£2,423 Per month

ESON2
REAL ESTATE

Key features

- Open-Plan Living
- High-End Kitchen
- Luxurious Bathroom
- Smart Design
- On-site Gym
- Workspace Facilities
- 24/7 Security

Description

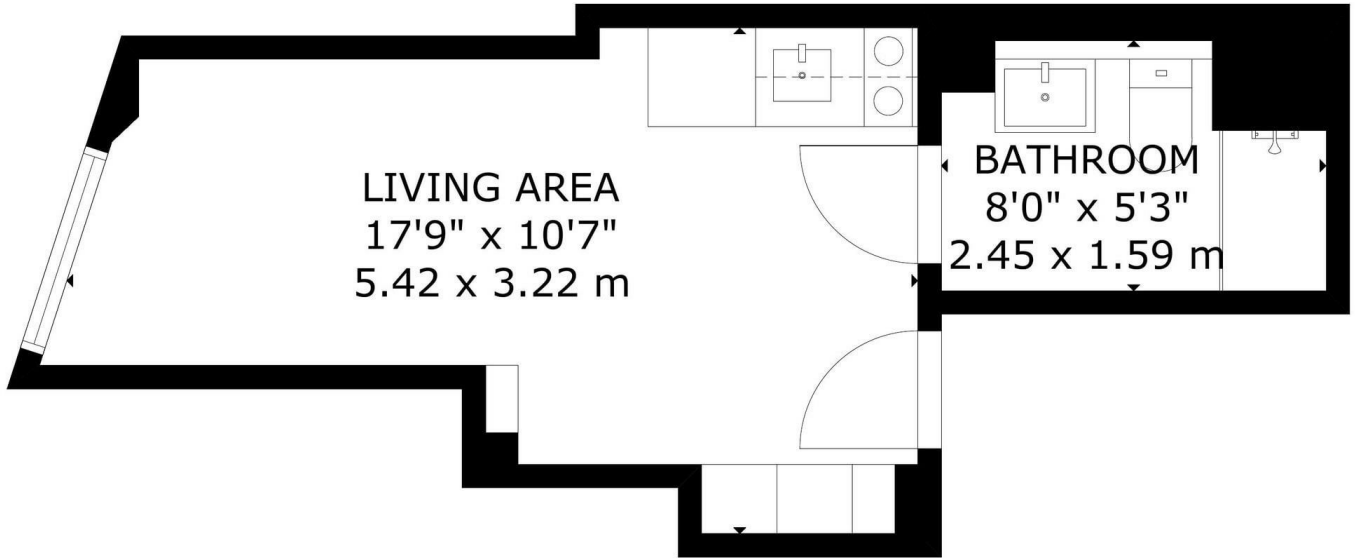
Newly renovated Chelsea studio with bright open-plan layout and large window by the bed. Features premium kitchen appliances, separate dining and study tables, built-in storage, elegant bathroom, plus on-site gym and co-working spaces. Prime location near King's Road.



Directions

A bright open-plan space filled with a natural light make everyday living effortless, A fully equipped kitchen with premium integrated appliances and a stylish bathroom with walk-in shower. An elegant space that's both functional and modern creating a unique ambiance.

Floor plans

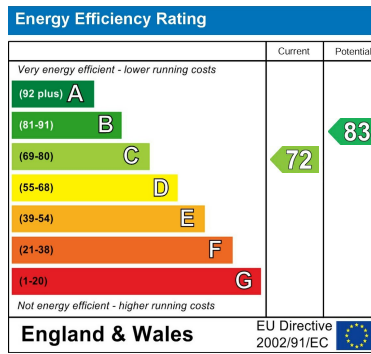


LIVING AREA
17'9" x 10'7"
5.42 x 3.22 m

BATHROOM
8'0" x 5'3"
2.45 x 1.59 m

LOWER GROUND FLOOR

GROSS INTERNAL AREA
TOTAL: 17 m²/185 sq.ft
LOWER GROUND FLOOR: 17 m²/185 sq.ft
SIZE AND DIMENSIONS ARE APPROXIMATE, ACTUAL MAY VARY



Council Tax Band EPC Rating C



301 Michelin House 81 Fulham road
London
Greater London
SW3 6RD
07920 257649
fayeel@eson2.co.uk
www.eson2.co.uk