



# Marlborough Road

Richmond, TW10

A fantastic three bedroom, split-level apartment located on this sought after Richmond Hill road within close proximity to Richmond Station & amenities.

**CHESTERTONS**



# Marlborough Road

Richmond, TW10

- Three Bedrooms
- Split-Level Apartment
- Richmond Hill Location
- Garage

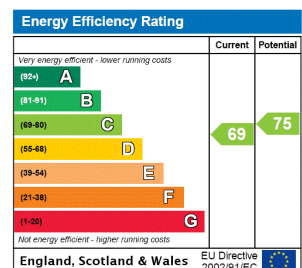


This rare Richmond Hill split-level apartment has three bedrooms, one with an en-suite, and a further bathroom, a large reception room and a fully equipped kitchen.

The apartment is located in a beautiful period building at the centre of The Village on Richmond Hill. Close by is Richmond Park, Terrace Gardens, the River and all of the amenities and transport links that Richmond town centre has to offer.

The Vineyard School and St Elizabeth's School are also located very close by.

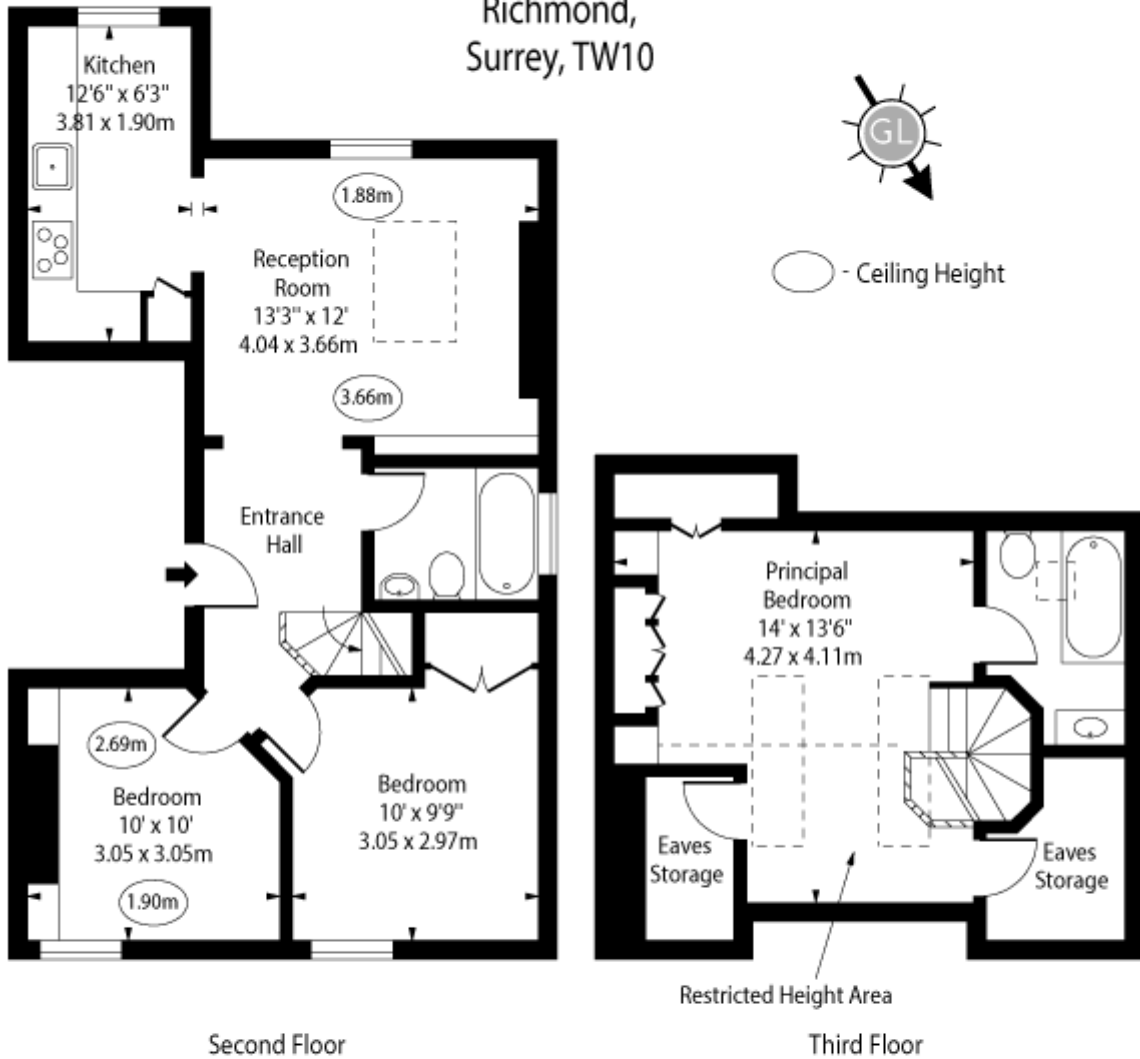
**Minimum Term:** 12 months  
**Deposit Required:** 5 weeks  
**Local Authority:** Richmond upon Thames  
**Council Tax Band:** E  
**EPC Rating:** C  
**Furnished**



### *Chestertons Richmond Lettings*

23a Friars Stile Road  
 Richmond  
 Surrey  
 TW10 6NH  
 richmondlettingsusers@chestertons.co.uk  
 02037583333  
 chestertons.co.uk

Marlborough Road,  
Richmond,  
Surrey, TW10



Second Floor

Third Floor

Approx Gross Internal Area

774 Sq Ft - 71.90 Sq M

Approx. Floor Area Including Restricted Heights

887 Sq Ft - 82.40 Sq M

(Including Eaves Storage)

For Illustration Purposes Only - Not To Scale

[www.goldlens.co.uk](http://www.goldlens.co.uk)

Ref. No. 023794E

